

ABP1 Antibody (N-term)
Affinity Purified Rabbit Polyclonal Antibody (Pab)
Catalog # AP13940a

Specification

ABP1 Antibody (N-term) - Product Information

Application	WB,E
Primary Accession	P19801
Other Accession	NP_001082.2
Reactivity	Human
Host	Rabbit
Clonality	Polyclonal
Isotype	Rabbit IgG
Calculated MW	85378
Antigen Region	71-100

ABP1 Antibody (N-term) - Additional Information

Gene ID 26

Other Names

Amiloride-sensitive amine oxidase [copper-containing], DAO, Diamine oxidase, Amiloride-binding protein 1, Amine oxidase copper domain-containing protein 1, Histaminase, Kidney amine oxidase, KAO, AOC1, ABP1, DAO1

Target/Specificity

This ABP1 antibody is generated from rabbits immunized with a KLH conjugated synthetic peptide between 71-100 amino acids from the N-terminal region of human ABP1.

Dilution

WB~~1:1000

Format

Purified polyclonal antibody supplied in PBS with 0.09% (W/V) sodium azide. This antibody is purified through a protein A column, followed by peptide affinity purification.

Storage

Maintain refrigerated at 2-8°C for up to 2 weeks. For long term storage store at -20°C in small aliquots to prevent freeze-thaw cycles.

Precautions

ABP1 Antibody (N-term) is for research use only and not for use in diagnostic or therapeutic procedures.

ABP1 Antibody (N-term) - Protein Information

Name AOC1 {ECO:0000303|PubMed:19764817, ECO:0000312|HGNC:HGNC:80}

Function Catalyzes the oxidative deamination of primary amines to the corresponding aldehydes with the concomitant production of hydrogen peroxide and ammonia (PubMed:[12072962](#), PubMed:[19764817](#), PubMed:[239684](#), PubMed:[8144586](#)). Its preferred substrates are the diamines histamine and 1-methylhistamine and it could therefore play a role in allergic and immune responses (PubMed:[12072962](#)). Has a broad specificity for diamines and can also act on cadaverine and putrescine, two products of amino acid catabolism (PubMed:[12072962](#)). It could also act on polyamines, like spermidine and spermine though less efficiently, and regulate various biological processes (PubMed:[12072962](#), PubMed:[239684](#)).

Cellular Location

Secreted, extracellular space. Cell membrane; Peripheral membrane protein; Extracellular side

Tissue Location

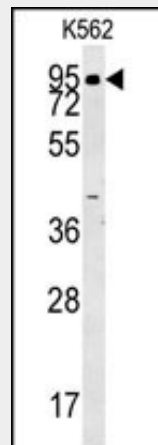
Widely expressed with higher expression in placenta and kidney.

ABP1 Antibody (N-term) - Protocols

Provided below are standard protocols that you may find useful for product applications.

- [Western Blot](#)
- [Blocking Peptides](#)
- [Dot Blot](#)
- [Immunohistochemistry](#)
- [Immunofluorescence](#)
- [Immunoprecipitation](#)
- [Flow Cytometry](#)
- [Cell Culture](#)

ABP1 Antibody (N-term) - Images



ABP1 Antibody (N-term) (Cat. #AP13940a) western blot analysis in K562 cell line lysates (35ug/lane). This demonstrates the ABP1 antibody detected the ABP1 protein (arrow).

ABP1 Antibody (N-term) - Background

This gene encodes a membrane glycoprotein that is expressed in many epithelium-rich and/or hematopoietic tissues and oxidatively deaminates putrescine and histamine. The protein may play a role in controlling the level of histamine and/or putrescine in these tissues. It also binds to and is inhibited by amiloride, a

diuretic that acts by closing epithelial sodium ion channels.

ABP1 Antibody (N-term) - References

Ruano, G., et al. Pharmacogenomics 11(7):959-971(2010)

McGrath, A.P., et al. Acta Crystallogr. Sect. F Struct. Biol. Cryst. Commun. 66 (PT 2), 137-142 (2010)

:

Chambers, J.C., et al. Nat. Genet. 42(2):149-152(2010)

McGrath, A.P., et al. Biochemistry 48(41):9810-9822(2009)

Song, W.B., et al. World J. Gastroenterol. 15(31):3916-3919(2009)