

**Mouse Csnk1g3 Antibody (C-term)**  
**Affinity Purified Rabbit Polyclonal Antibody (Pab)**  
**Catalog # AP13912b**

**Specification**

---

**Mouse Csnk1g3 Antibody (C-term) - Product Information**

Application	WB, IHC-P, FC,E
Primary Accession	<a href="#">O8C4X2</a>
Other Accession	<a href="#">O62763</a> , <a href="#">NP_690022.2</a> , <a href="#">XP_001478579.1</a>
Reactivity	Mouse
Predicted	Rat
Host	Rabbit
Clonality	Polyclonal
Isotype	Rabbit IgG
Calculated MW	48938
Antigen Region	333-361

**Mouse Csnk1g3 Antibody (C-term) - Additional Information**

**Gene ID** 70425

**Other Names**

Casein kinase I isoform gamma-3, CKI-gamma 3, Csnk1g3

**Target/Specificity**

This Mouse Csnk1g3 antibody is generated from rabbits immunized with a KLH conjugated synthetic peptide between 333-361 amino acids from the C-terminal region of mouse Csnk1g3.

**Dilution**

WB~~1:1000  
IHC-P~~1:25  
FC~~1:25

**Format**

Purified polyclonal antibody supplied in PBS with 0.09% (W/V) sodium azide. This antibody is purified through a protein A column, followed by peptide affinity purification.

**Storage**

Maintain refrigerated at 2-8°C for up to 2 weeks. For long term storage store at -20°C in small aliquots to prevent freeze-thaw cycles.

**Precautions**

Mouse Csnk1g3 Antibody (C-term) is for research use only and not for use in diagnostic or therapeutic procedures.

**Mouse Csnk1g3 Antibody (C-term) - Protein Information**

**Name** Csnk1g3

**Function** Serine/threonine-protein kinase. Casein kinases are operationally defined by their preferential utilization of acidic proteins such as caseins as substrates. It can phosphorylate a large number of proteins. Participates in Wnt signaling (By similarity). Regulates fast synaptic transmission mediated by glutamate.

#### Cellular Location

Cytoplasm.

#### Tissue Location

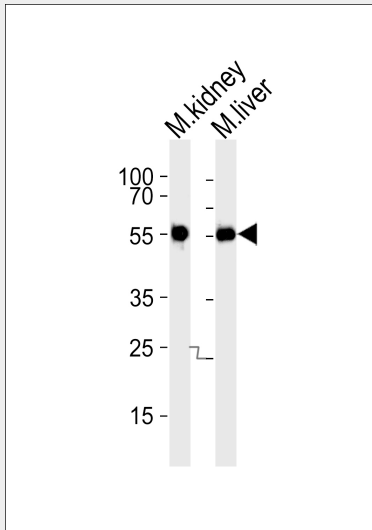
Expressed in both the striatum and the neocortex.

### Mouse Csnk1g3 Antibody (C-term) - Protocols

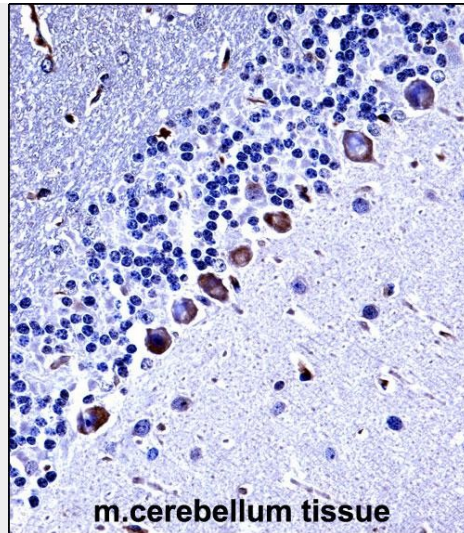
Provided below are standard protocols that you may find useful for product applications.

- [Western Blot](#)
- [Blocking Peptides](#)
- [Dot Blot](#)
- [Immunohistochemistry](#)
- [Immunofluorescence](#)
- [Immunoprecipitation](#)
- [Flow Cytometry](#)
- [Cell Culture](#)

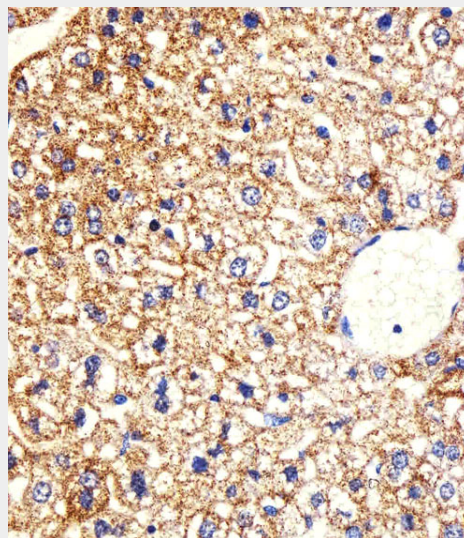
### Mouse Csnk1g3 Antibody (C-term) - Images



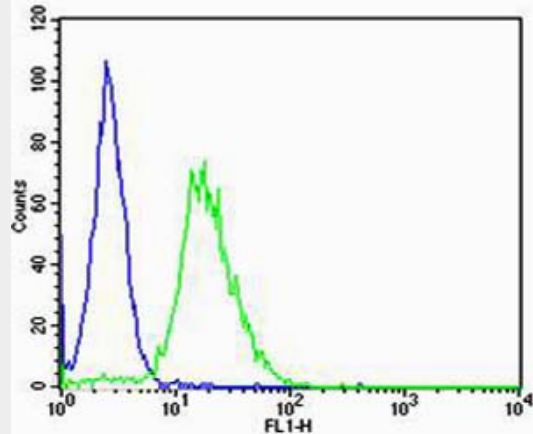
Western blot analysis of lysates from mouse kidney and liver tissue lysate (from left to right), using Mouse Csnk1g3 Antibody (C-term)(Cat. #AP13912b). AP13912b was diluted at 1:1000 at each lane. A goat anti-rabbit IgG H&L(HRP) at 1:5000 dilution was used as the secondary antibody. Lysates at 35ug per lane.



Mouse Csnk1g3 Antibody (C-term) (AP13912b) immunohistochemistry analysis in formalin fixed and paraffin embedded mouse cerebellum tissue followed by peroxidase conjugation of the secondary antibody and DAB staining. This data demonstrates the use of Mouse Csnk1g3 Antibody (C-term) for immunohistochemistry. Clinical relevance has not been evaluated.



Immunohistochemical analysis of paraffin-embedded M. liver section using Mouse Csnk1g3 Antibody (C-term) (Cat#AP13912b). AP13912b was diluted at 1:25 dilution. A peroxidase-conjugated goat anti-rabbit IgG at 1:400 dilution was used as the secondary antibody, followed by DAB staining.



Flow cytometric analysis of NIH/3T3 cells using Mouse Csnk1g3 Antibody (C-term)(green, Cat#AP13912b) compared to an isotype control of rabbit IgG(blue). AP13912b was diluted at 1:25 dilution. An Alexa Fluor® 488 goat anti-rabbit IgG at 1:400 dilution was used as the secondary antibody.

#### **Mouse Csnk1g3 Antibody (C-term) - Background**

Casein kinases are operationally defined by their preferential utilization of acidic proteins such as caseins as substrates. It can phosphorylate a large number of proteins. Participates in Wnt signaling (By similarity).

#### **Mouse Csnk1g3 Antibody (C-term) - References**

- Trivedi, C.M., et al. Dev. Cell 19(3):450-459(2010)
- Piao, Y., et al. Genome Res. 11(9):1553-1558(2001)
- Verlaet, M., et al. Biochem. Biophys. Res. Commun. 283(1):12-18(2001)