

**VAV1 Antibody (Center)**  
**Affinity Purified Rabbit Polyclonal Antibody (Pab)**  
**Catalog # AP13853c**

**Specification**

---

**VAV1 Antibody (Center) - Product Information**

Application	WB,E
Primary Accession	<a href="#">P15498</a>
Other Accession	<a href="#">NP_005419.2</a>
Reactivity	Human
Host	Rabbit
Clonality	Polyclonal
Isotype	Rabbit IgG
Calculated MW	98314
Antigen Region	437-466

**VAV1 Antibody (Center) - Additional Information**

**Gene ID** 7409

**Other Names**

Proto-oncogene vav, VAV1, VAV

**Target/Specificity**

This VAV1 antibody is generated from rabbits immunized with a KLH conjugated synthetic peptide between 437-466 amino acids from the Central region of human VAV1.

**Dilution**

WB~~1:1000

**Format**

Purified polyclonal antibody supplied in PBS with 0.09% (W/V) sodium azide. This antibody is purified through a protein A column, followed by peptide affinity purification.

**Storage**

Maintain refrigerated at 2-8°C for up to 2 weeks. For long term storage store at -20°C in small aliquots to prevent freeze-thaw cycles.

**Precautions**

VAV1 Antibody (Center) is for research use only and not for use in diagnostic or therapeutic procedures.

**VAV1 Antibody (Center) - Protein Information**

**Name** VAV1

**Synonyms** VAV

**Function** Couples tyrosine kinase signals with the activation of the Rho/Rac GTPases, thus leading to cell differentiation and/or proliferation.

**Tissue Location**

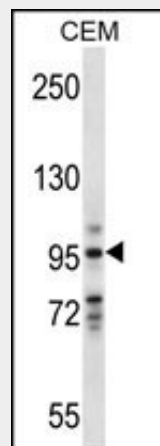
Widely expressed in hematopoietic cells but not in other cell types

**VAV1 Antibody (Center) - Protocols**

Provided below are standard protocols that you may find useful for product applications.

- [Western Blot](#)
- [Blocking Peptides](#)
- [Dot Blot](#)
- [Immunohistochemistry](#)
- [Immunofluorescence](#)
- [Immunoprecipitation](#)
- [Flow Cytometry](#)
- [Cell Culture](#)

**VAV1 Antibody (Center) - Images**



VAV1 Antibody (Center) (Cat. #AP13853c) western blot analysis in CEM cell line lysates (35ug/lane). This demonstrates the VAV1 antibody detected the VAV1 protein (arrow).

**VAV1 Antibody (Center) - Background**

The protein encoded by this proto-oncogene is a member of the Dbp family of guanine nucleotide exchange factors (GEF) for the Rho family of GTP binding proteins. The protein is important in hematopoiesis, playing a role in T-cell and B-cell development and activation. This particular GEF has been identified as the specific binding partner of Nef proteins from HIV-1. Coexpression and binding of these partners initiates profound morphological changes, cytoskeletal rearrangements and the JNK/SAPK signaling cascade, leading to increased levels of viral transcription and replication.

**VAV1 Antibody (Center) - References**

Bailey, S.D., et al. Diabetes Care 33(10):2250-2253(2010)  
Hollmann, A., et al. Hematol Oncol 28(3):142-150(2010)

Barda-Saad, M., et al. EMBO J. 29(14):2315-2328(2010)  
Davila, S., et al. Genes Immun. 11(3):232-238(2010)  
Kim, H.S., et al. Immunity 32(2):175-186(2010)