

**LRIG2 Antibody (C-term)**  
**Affinity Purified Rabbit Polyclonal Antibody (Pab)**  
**Catalog # AP13821b****Specification**

---

**LRIG2 Antibody (C-term) - Product Information**

Application	<b>WB, IHC-P,E</b>
Primary Accession	<a href="#">O94898</a>
Other Accession	<a href="#">O52KR2</a> , <a href="#">NP_055628.1</a>
Reactivity	<b>Human</b>
Host	<b>Rabbit</b>
Clonality	<b>Polyclonal</b>
Isotype	<b>Rabbit IgG</b>
Antigen Region	<b>817-845</b>

**LRIG2 Antibody (C-term) - Additional Information****Gene ID** 9860**Other Names**

Leucine-rich repeats and immunoglobulin-like domains protein 2, LIG-2, LRIG2, KIAA0806, LIG2

**Target/Specificity**

This LRIG2 antibody is generated from rabbits immunized with a KLH conjugated synthetic peptide between 817-845 amino acids from the C-terminal region of human LRIG2.

**Dilution**WB~~1:2000  
IHC-P~~1:10~50**Format**

Purified polyclonal antibody supplied in PBS with 0.09% (W/V) sodium azide. This antibody is purified through a protein A column, followed by peptide affinity purification.

**Storage**

Maintain refrigerated at 2-8°C for up to 2 weeks. For long term storage store at -20°C in small aliquots to prevent freeze-thaw cycles.

**Precautions**

LRIG2 Antibody (C-term) is for research use only and not for use in diagnostic or therapeutic procedures.

**LRIG2 Antibody (C-term) - Protein Information****Name** LRIG2**Synonyms** KIAA0806, LIG2

**Cellular Location**

Cell membrane; Single-pass type I membrane protein Cytoplasm

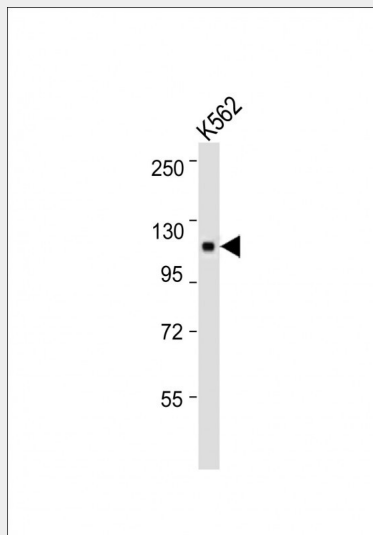
**Tissue Location**

Detected in all tissues analyzed.

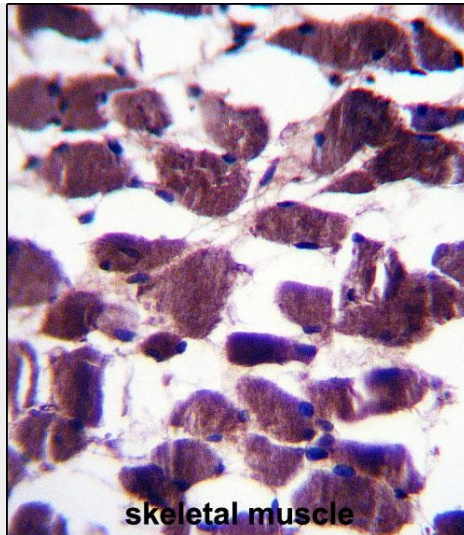
**LRIG2 Antibody (C-term) - Protocols**

Provided below are standard protocols that you may find useful for product applications.

- [Western Blot](#)
- [Blocking Peptides](#)
- [Dot Blot](#)
- [Immunohistochemistry](#)
- [Immunofluorescence](#)
- [Immunoprecipitation](#)
- [Flow Cytometry](#)
- [Cell Culture](#)

**LRIG2 Antibody (C-term) - Images**

Anti-LRIG2 Antibody (C-term) at 1:2000 dilution + K562 whole cell lysate Lysates/proteins at 20  $\mu$ g per lane. Secondary Goat Anti-Rabbit IgG, (H+L), Peroxidase conjugated at 1/10000 dilution. Predicted band size : 119 kDa Blocking/Dilution buffer: 5% NFDN/TBST.



LRIG2 Antibody (C-term) (Cat. #AP13821b) immunohistochemistry analysis in formalin fixed and paraffin embedded human skeletal muscle followed by peroxidase conjugation of the secondary antibody and DAB staining. This data demonstrates the use of LRIG2 Antibody (C-term) for immunohistochemistry. Clinical relevance has not been evaluated.

#### **LRIG2 Antibody (C-term) - References**

Andersson, U., et al. Acta Oncol (2010) In press : Holmlund, C., et al. Neuropathology 29(3):242-247(2009) Karlsson, T., et al. J. Invest. Dermatol. 128(5):1192-1195(2008) Rush, J., et al. Nat. Biotechnol. 23(1):94-101(2005) Guo, D., et al. Genomics 84(1):157-165(2004)

#### **LRIG2 Antibody (C-term) - Citations**

- [Urinary Tract Effects of HPSE2 Mutations.](#)
- [Heparanase 2, mutated in urofacial syndrome, mediates peripheral neural development in Xenopus.](#)