

SYT2 Antibody (Center)
Affinity Purified Rabbit Polyclonal Antibody (Pab)
Catalog # AP13771c

Specification

SYT2 Antibody (Center) - Product Information

Application	WB,E
Primary Accession	O8N9IO
Other Accession	P29101 , P46097 , NP_796376.2 , NP_001129976.1
Reactivity	Human
Predicted	Mouse, Rat
Host	Rabbit
Clonality	Polyclonal
Isotype	Rabbit IgG
Antigen Region	243-272

SYT2 Antibody (Center) - Additional Information

Gene ID 127833

Other Names

Synaptotagmin-2, Synaptotagmin II, SytII, SYT2

Target/Specificity

This SYT2 antibody is generated from rabbits immunized with a KLH conjugated synthetic peptide between 243-272 amino acids from the Central region of human SYT2.

Dilution

WB~~1:1000

Format

Purified polyclonal antibody supplied in PBS with 0.09% (W/V) sodium azide. This antibody is purified through a protein A column, followed by peptide affinity purification.

Storage

Maintain refrigerated at 2-8°C for up to 2 weeks. For long term storage store at -20°C in small aliquots to prevent freeze-thaw cycles.

Precautions

SYT2 Antibody (Center) is for research use only and not for use in diagnostic or therapeutic procedures.

SYT2 Antibody (Center) - Protein Information

Name SYT2 ([HGNC:11510](#))

Function Exhibits calcium-dependent phospholipid and inositol polyphosphate binding properties

(By similarity). May have a regulatory role in the membrane interactions during trafficking of synaptic vesicles at the active zone of the synapse (By similarity). Plays a role in dendrite formation by melanocytes (PubMed:[23999003](#)).

Cellular Location

Cytoplasmic vesicle, secretory vesicle, synaptic vesicle membrane {ECO:0000250|UniProtKB:P29101}; Single-pass membrane protein. Cytoplasmic vesicle, secretory vesicle, chromaffin granule membrane {ECO:0000250|UniProtKB:P21707}; Single-pass membrane protein {ECO:0000250|UniProtKB:P29101}. Cytoplasm {ECO:0000250|UniProtKB:P29101}

Tissue Location

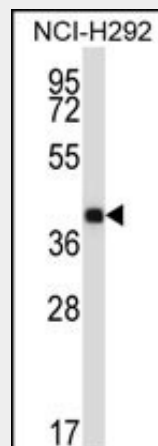
Expressed at the neuromuscular junction (PubMed:33659639). Expressed in melanocytes (PubMed:23999003)

SYT2 Antibody (Center) - Protocols

Provided below are standard protocols that you may find useful for product applications.

- [Western Blot](#)
- [Blocking Peptides](#)
- [Dot Blot](#)
- [Immunohistochemistry](#)
- [Immunofluorescence](#)
- [Immunoprecipitation](#)
- [Flow Cytometry](#)
- [Cell Culture](#)

SYT2 Antibody (Center) - Images



SYT2 Antibody (Center) (Cat. #AP13771c) western blot analysis in NCI-H292 cell line lysates (35ug/lane). This demonstrates the SYT2 antibody detected the SYT2 protein (arrow).

SYT2 Antibody (Center) - Background

Synaptotagmins, like SYT2, are integral membrane proteins of synaptic vesicles thought to serve as Ca²⁺ sensors in the process of vesicular trafficking and exocytosis (Hilbush and Morgan, 1994 [PubMed 8058779]).

SYT2 Antibody (Center) - References

Young, S.M. Jr., et al. Neuron 63(4):482-496(2009)
Han, C., et al. J. Immunol. 182(5):2986-2996(2009)
Laohavisit, A., et al. Plant Cell 21(2):479-493(2009)
Shi, J., et al. Biochem. Biophys. Res. Commun. 374(2):331-335(2008)
Lee, B.H., et al. Mol. Cell 15(5):741-751(2004)