

**MMP15 Antibody (N-term)**  
**Affinity Purified Rabbit Polyclonal Antibody (Pab)**  
**Catalog # AP13751a**

**Specification**

---

**MMP15 Antibody (N-term) - Product Information**

Application	WB, IHC-P,E
Primary Accession	<a href="#">P51511</a>
Other Accession	<a href="#">NP_002419.1</a>
Reactivity	Human
Host	Rabbit
Clonality	Polyclonal
Isotype	Rabbit IgG
Calculated MW	75807
Antigen Region	168-196

**MMP15 Antibody (N-term) - Additional Information**

**Gene ID** 4324

**Other Names**

Matrix metalloproteinase-15, MMP-15, 3424-, Membrane-type matrix metalloproteinase 2, MT-MMP 2, MTMMP2, Membrane-type-2 matrix metalloproteinase, MT2-MMP, MT2MMP, SMCP-2, MMP15

**Target/Specificity**

This MMP15 antibody is generated from rabbits immunized with a KLH conjugated synthetic peptide between 168-196 amino acids from the N-terminal region of human MMP15.

**Dilution**

WB~~1:1000  
IHC-P~~1:10~50

**Format**

Purified polyclonal antibody supplied in PBS with 0.09% (W/V) sodium azide. This antibody is purified through a protein A column, followed by peptide affinity purification.

**Storage**

Maintain refrigerated at 2-8°C for up to 2 weeks. For long term storage store at -20°C in small aliquots to prevent freeze-thaw cycles.

**Precautions**

MMP15 Antibody (N-term) is for research use only and not for use in diagnostic or therapeutic procedures.

**MMP15 Antibody (N-term) - Protein Information**

**Name** MMP15

**Function** Endopeptidase that degrades various components of the extracellular matrix. May activate progelatinase A.

**Cellular Location**

Membrane; Single-pass type I membrane protein; Extracellular side

**Tissue Location**

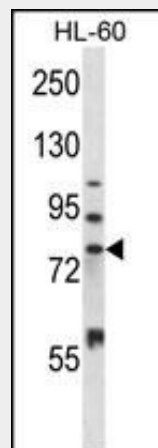
Appeared to be synthesized preferentially in liver, placenta, testis, colon and intestine. Substantial amounts are also detected in pancreas, kidney, lung, heart and skeletal muscle

**MMP15 Antibody (N-term) - Protocols**

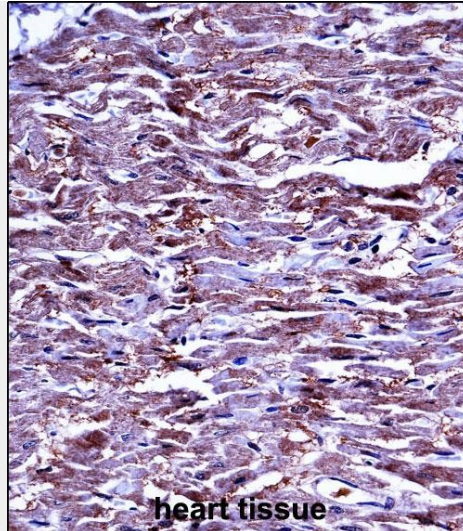
Provided below are standard protocols that you may find useful for product applications.

- [Western Blot](#)
- [Blocking Peptides](#)
- [Dot Blot](#)
- [Immunohistochemistry](#)
- [Immunofluorescence](#)
- [Immunoprecipitation](#)
- [Flow Cytometry](#)
- [Cell Culture](#)

**MMP15 Antibody (N-term) - Images**



MMP15 Antibody (N-term) (Cat. #AP13751a) western blot analysis in HL-60 cell line lysates (35ug/lane). This demonstrates the MMP15 antibody detected the MMP15 protein (arrow).



MMP15 Antibody (N-term) (AP13751a) immunohistochemistry analysis in formalin fixed and paraffin embedded human heart tissue followed by peroxidase conjugation of the secondary antibody and DAB staining. This data demonstrates the use of MMP15 Antibody (N-term) for immunohistochemistry. Clinical relevance has not been evaluated.

#### **MMP15 Antibody (N-term) - Background**

Proteins of the matrix metalloproteinase (MMP) family are involved in the breakdown of extracellular matrix in normal physiological processes, such as embryonic development, reproduction, and tissue remodeling, as well as in disease processes, such as arthritis and metastasis. Most MMP's are secreted as inactive proproteins which are activated when cleaved by extracellular proteinases. However, the protein encoded by this gene is a member of the membrane-type MMP (MT-MMP) subfamily; each member of this subfamily contains a potential transmembrane domain suggesting that these proteins are expressed at the cell surface rather than secreted.

#### **MMP15 Antibody (N-term) - References**

Romero, R., et al. Am. J. Obstet. Gynecol. 203 (4), 361 (2010) :  
Bailey, S.D., et al. Diabetes Care 33(10):2250-2253(2010)  
Nalpas, B., et al. Gut 59(8):1120-1126(2010)  
Romero, R., et al. Am. J. Obstet. Gynecol. 202 (5), 431 (2010) :  
Mohammad, M.A., et al. Int. J. Biol. Markers 25(2):69-74(2010)