

**TUBB2A Antibody (C-term)**  
**Affinity Purified Rabbit Polyclonal Antibody (Pab)**  
**Catalog # AP13739b**

**Specification**

---

**TUBB2A Antibody (C-term) - Product Information**

Application	WB,E
Primary Accession	<a href="#">Q13885</a>
Other Accession	<a href="#">P02554</a> , <a href="#">P13602</a> , <a href="#">P32882</a> , <a href="#">Q3KRE8</a> , <a href="#">Q9CWF2</a> , <a href="#">Q9BVA1</a> , <a href="#">Q6B856</a> , <a href="#">P85108</a> , <a href="#">Q7TMM9</a> , <a href="#">Q4R5B3</a> , <a href="#">P09203</a> , <a href="#">NP_001060.1</a>
Reactivity	Human
Predicted	Chicken, Monkey, Mouse, Rat, Bovine, Xenopus, Pig
Host	Rabbit
Clonality	Polyclonal
Isotype	Rabbit IgG
Calculated MW	49907
Antigen Region	410-438

**TUBB2A Antibody (C-term) - Additional Information**

**Gene ID** 7280

**Other Names**

Tubulin beta-2A chain, Tubulin beta class IIa, TUBB2A, TUBB2

**Target/Specificity**

This TUBB2A antibody is generated from rabbits immunized with a KLH conjugated synthetic peptide between 410-438 amino acids from the C-terminal region of human TUBB2A.

**Dilution**

WB~~1:1000

**Format**

Purified polyclonal antibody supplied in PBS with 0.09% (W/V) sodium azide. This antibody is purified through a protein A column, followed by peptide affinity purification.

**Storage**

Maintain refrigerated at 2-8°C for up to 2 weeks. For long term storage store at -20°C in small aliquots to prevent freeze-thaw cycles.

**Precautions**

TUBB2A Antibody (C-term) is for research use only and not for use in diagnostic or therapeutic procedures.

**TUBB2A Antibody (C-term) - Protein Information**

**Name** TUBB2A

**Synonyms** TUBB2

**Function** Tubulin is the major constituent of microtubules, a cylinder consisting of laterally associated linear protofilaments composed of alpha- and beta-tubulin heterodimers. Microtubules grow by the addition of GTP-tubulin dimers to the microtubule end, where a stabilizing cap forms. Below the cap, tubulin dimers are in GDP-bound state, owing to GTPase activity of alpha-tubulin.

**Cellular Location**

Cytoplasm, cytoskeleton.

**Tissue Location**

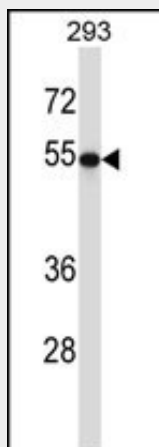
High expression in brain, where it represents 30% of all beta-tubulins.

### TUBB2A Antibody (C-term) - Protocols

Provided below are standard protocols that you may find useful for product applications.

- [Western Blot](#)
- [Blocking Peptides](#)
- [Dot Blot](#)
- [Immunohistochemistry](#)
- [Immunofluorescence](#)
- [Immunoprecipitation](#)
- [Flow Cytometry](#)
- [Cell Culture](#)

### TUBB2A Antibody (C-term) - Images



TUBB2A Antibody (C-term) (Cat. #AP13739b) western blot analysis in 293 cell line lysates (35ug/lane). This demonstrates the TUBB2A antibody detected the TUBB2A protein (arrow).

### TUBB2A Antibody (C-term) - Background

Tubulin is the major constituent of microtubules. It binds two moles of GTP, one at an exchangeable site on the beta chain and one at a non-exchangeable site on the alpha-chain (By similarity).

### TUBB2A Antibody (C-term) - References

Martins-de-Souza, D., et al. J Psychiatr Res 44(14):989-991(2010)  
Frum, R., et al. J. Proteome Res. 6(4):1410-1417(2007)  
Yeh, T.S., et al. Cancer Res. 64(22):8334-8340(2004)  
Okai, T., et al. J. Cell. Sci. 117 (PT 20), 4705-4715 (2004) :  
Jin, J., et al. Curr. Biol. 14(16):1436-1450(2004)