

FCGR2C Antibody (C-term)
Affinity Purified Rabbit Polyclonal Antibody (Pab)
Catalog # AP13730b

Specification

FCGR2C Antibody (C-term) - Product Information

Application	WB,E
Primary Accession	P31995
Reactivity	Human
Host	Rabbit
Clonality	Polyclonal
Isotype	Rabbit IgG
Calculated MW	35578
Antigen Region	260-288

FCGR2C Antibody (C-term) - Additional Information

Gene ID 9103

Other Names

Low affinity immunoglobulin gamma Fc region receptor II-c, IgG Fc receptor II-c, CDw32, Fc-gamma RII-c, Fc-gamma-RIIc, FcRII-c, CD32, FCGR2C, CD32, FCG2, IGFR2

Target/Specificity

This FCGR2C antibody is generated from rabbits immunized with a KLH conjugated synthetic peptide between 260-288 amino acids from the C-terminal region of human FCGR2C.

Dilution

WB~~1:1000

Format

Purified polyclonal antibody supplied in PBS with 0.09% (W/V) sodium azide. This antibody is purified through a protein A column, followed by peptide affinity purification.

Storage

Maintain refrigerated at 2-8°C for up to 2 weeks. For long term storage store at -20°C in small aliquots to prevent freeze-thaw cycles.

Precautions

FCGR2C Antibody (C-term) is for research use only and not for use in diagnostic or therapeutic procedures.

FCGR2C Antibody (C-term) - Protein Information

Name FCGR2C

Synonyms CD32, FCG2, IGFR2

Function Receptor for the Fc region of complexed immunoglobulins gamma. Low affinity receptor. Involved in a variety of effector and regulatory functions such as phagocytosis of immune complexes and modulation of antibody production by B-cells.

Cellular Location

[Isoform IIC4]: Cytoplasm. [Isoform IIC2]: Cell membrane; Single-pass type I membrane protein

Tissue Location

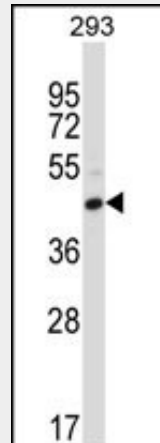
Isoform IIC1 is detected in monocytes, macrophages, polymorphonuclear cells and natural killer cells

FCGR2C Antibody (C-term) - Protocols

Provided below are standard protocols that you may find useful for product applications.

- [Western Blot](#)
- [Blocking Peptides](#)
- [Dot Blot](#)
- [Immunohistochemistry](#)
- [Immunofluorescence](#)
- [Immunoprecipitation](#)
- [Flow Cytometry](#)
- [Cell Culture](#)

FCGR2C Antibody (C-term) - Images



FCGR2C Antibody (C-term) (Cat. #AP13730b) western blot analysis in 293 cell line lysates (35ug/lane). This demonstrates the FCGR2C antibody detected the FCGR2C protein (arrow).

FCGR2C Antibody (C-term) - Background

Receptor for the Fc region of complexed immunoglobulins gamma. Low affinity receptor. Involved in a variety of effector and regulatory functions such as phagocytosis of immune complexes and modulation of antibody production by B-cells.