

**FCGR2A Antibody (C-term)**  
**Affinity Purified Rabbit Polyclonal Antibody (Pab)**  
**Catalog # AP13724b**

**Specification**

---

**FCGR2A Antibody (C-term) - Product Information**

Application	WB,E
Primary Accession	<a href="#">P12318</a>
Other Accession	<a href="#">NP_001129691.1</a>
Reactivity	Human
Host	Rabbit
Clonality	Polyclonal
Isotype	Rabbit IgG
Calculated MW	35001
Antigen Region	256-285

**FCGR2A Antibody (C-term) - Additional Information**

**Gene ID** 2212

**Other Names**

Low affinity immunoglobulin gamma Fc region receptor II-a, IgG Fc receptor II-a, CDw32, Fc-gamma RII-a, Fc-gamma-RIIa, FcRII-a, CD32, FCGR2A, CD32, FCG2, FCGR2A1, IGFR2

**Target/Specificity**

This FCGR2A antibody is generated from rabbits immunized with a KLH conjugated synthetic peptide between 256-285 amino acids from the C-terminal region of human FCGR2A.

**Dilution**

WB~~1:1000

**Format**

Purified polyclonal antibody supplied in PBS with 0.09% (W/V) sodium azide. This antibody is purified through a protein A column, followed by peptide affinity purification.

**Storage**

Maintain refrigerated at 2-8°C for up to 2 weeks. For long term storage store at -20°C in small aliquots to prevent freeze-thaw cycles.

**Precautions**

FCGR2A Antibody (C-term) is for research use only and not for use in diagnostic or therapeutic procedures.

**FCGR2A Antibody (C-term) - Protein Information**

**Name** FCGR2A

**Synonyms** CD32, FCG2, FCGR2A1, IGFR2

**Function** Binds to the Fc region of immunoglobulins gamma. Low affinity receptor. By binding to IgG it initiates cellular responses against pathogens and soluble antigens. Promotes phagocytosis of opsonized antigens.

**Cellular Location**

Cell membrane; Single-pass type I membrane protein

**Tissue Location**

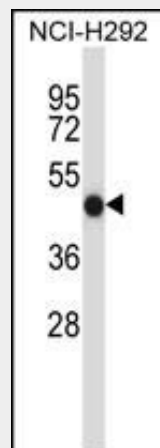
Found on monocytes, neutrophils and eosinophil platelets

**FCGR2A Antibody (C-term) - Protocols**

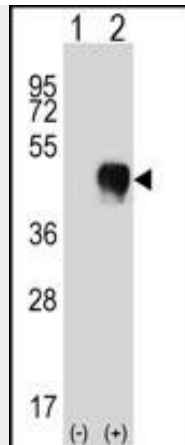
Provided below are standard protocols that you may find useful for product applications.

- [Western Blot](#)
- [Blocking Peptides](#)
- [Dot Blot](#)
- [Immunohistochemistry](#)
- [Immunofluorescence](#)
- [Immunoprecipitation](#)
- [Flow Cytometry](#)
- [Cell Culture](#)

**FCGR2A Antibody (C-term) - Images**



FCGR2A Antibody (C-term) (Cat. #AP13724b) western blot analysis in NCI-H292 cell line lysates (35ug/lane). This demonstrates the FCGR2A antibody detected the FCGR2A protein (arrow).



Western blot analysis of FCGR2A (arrow) using rabbit polyclonal FCGR2A Antibody (C-term) (Cat. #AP13724b). 293 cell lysates (2 ug/lane) either nontransfected (Lane 1) or transiently transfected (Lane 2) with the FCGR2A gene.

### **FCGR2A Antibody (C-term) - Background**

This gene encodes one member of a family of immunoglobulin Fc receptor genes found on the surface of many immune response cells. The protein encoded by this gene is a cell surface receptor found on phagocytic cells such as macrophages and neutrophils, and is involved in the process of phagocytosis and clearing of immune complexes. Alternative splicing results in multiple transcript variants.

### **FCGR2A Antibody (C-term) - References**

Dornan, D., et al. Blood 116(20):4212-4222(2010)  
Zhang, C.Y., et al. J. Biol. Chem. 285(44):34250-34258(2010)  
Iwasaki, M., et al. Breast Cancer Res. Treat. (2010) In press :  
Ho-Pun-Cheung, A., et al. Pharmacogenomics J. (2010) In press :  
Sfar, I., et al. Arch Inst Pasteur Tunis 86 (1-4), 51-62 (2009) :