

MCL1 Antibody (Center)
Affinity Purified Rabbit Polyclonal Antibody (Pab)
Catalog # AP13704c

Specification

MCL1 Antibody (Center) - Product Information

| | |
|-------------------|--|
| Application | WB, IHC-P,E |
| Primary Accession | Q07820 |
| Other Accession | Q9Z1P3 , NP_877495.1 , NP_068779.1 |
| Reactivity | Human |
| Predicted | Rat |
| Host | Rabbit |
| Clonality | Polyclonal |
| Isotype | Rabbit IgG |
| Calculated MW | 37337 |
| Antigen Region | 217-245 |

MCL1 Antibody (Center) - Additional Information

Gene ID 4170

Other Names

Induced myeloid leukemia cell differentiation protein Mcl-1, Bcl-2-like protein 3, Bcl2-L-3, Bcl-2-related protein EAT/mcl1, mcl1/EAT, MCL1, BCL2L3

Target/Specificity

This MCL1 antibody is generated from rabbits immunized with a KLH conjugated synthetic peptide between 217-245 amino acids from the Central region of human MCL1.

Dilution

WB~~1:1000
IHC-P~~1:10~50

Format

Purified polyclonal antibody supplied in PBS with 0.09% (W/V) sodium azide. This antibody is purified through a protein A column, followed by peptide affinity purification.

Storage

Maintain refrigerated at 2-8°C for up to 2 weeks. For long term storage store at -20°C in small aliquots to prevent freeze-thaw cycles.

Precautions

MCL1 Antibody (Center) is for research use only and not for use in diagnostic or therapeutic procedures.

MCL1 Antibody (Center) - Protein Information

Name MCL1

Synonyms BCL2L3

Function Involved in the regulation of apoptosis versus cell survival, and in the maintenance of viability but not of proliferation. Mediates its effects by interactions with a number of other regulators of apoptosis. Isoform 1 inhibits apoptosis. Isoform 2 promotes apoptosis.

Cellular Location

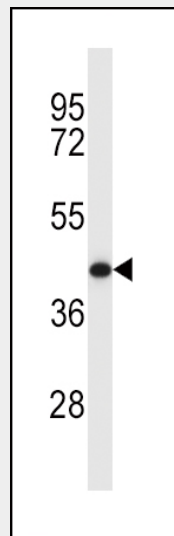
Membrane; Single-pass membrane protein. Cytoplasm. Mitochondrion. Nucleus, nucleoplasm
Note=Cytoplasmic, associated with mitochondria

MCL1 Antibody (Center) - Protocols

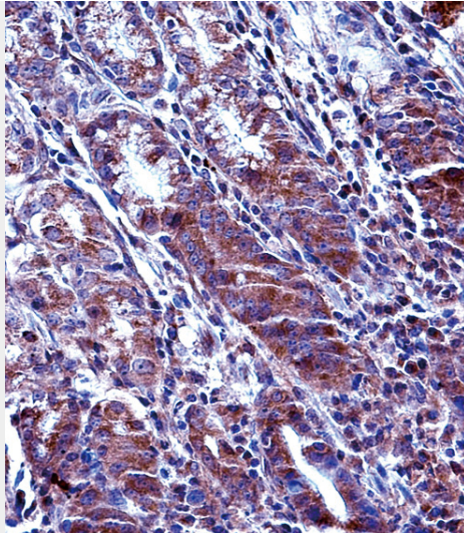
Provided below are standard protocols that you may find useful for product applications.

- [Western Blot](#)
- [Blocking Peptides](#)
- [Dot Blot](#)
- [Immunohistochemistry](#)
- [Immunofluorescence](#)
- [Immunoprecipitation](#)
- [Flow Cytometry](#)
- [Cell Culture](#)

MCL1 Antibody (Center) - Images



MCL1 Antibody (Center) (Cat. #AP13704c) western blot analysis in Y79 cell line lysates (35ug/lane). This demonstrates the MCL1 antibody detected the MCL1 protein (arrow).



MCL1 Antibody (Center) (Cat. #AP13704c) immunohistochemistry analysis in formalin fixed and paraffin embedded human stomach tissue followed by peroxidase conjugation of the secondary antibody and DAB staining. This data demonstrates the use of MCL1 Antibody (Center) for immunohistochemistry. Clinical relevance has not been evaluated.

MCL1 Antibody (Center) - Background

This gene encodes an anti-apoptotic protein, which is a member of the Bcl-2 family. Alternative splicing results in multiple transcript variants. The longest gene product (isoform 1) enhances cell survival by inhibiting apoptosis while the alternatively spliced shorter gene products (isoform 2 and isoform 3) promote apoptosis and are death-inducing.

MCL1 Antibody (Center) - References

Shimada, M., et al. Hum. Genet. 128(4):433-441(2010)
Bailey, S.D., et al. Diabetes Care 33(10):2250-2253(2010)
Kim, J.H., et al. FEBS Lett. 583(17):2758-2764(2009)
Maurer, U., et al. Mol. Cell 21(6):749-760(2006)
Domina, A.M., et al. Oncogene 23(31):5301-5315(2004)