

**EMILIN3 Antibody (C-term)**  
**Affinity Purified Rabbit Polyclonal Antibody (Pab)**  
**Catalog # AP13662b**

**Specification**

---

**EMILIN3 Antibody (C-term) - Product Information**

Application	WB, IHC-P,E
Primary Accession	<a href="#">O9NT22</a>
Other Accession	<a href="#">NP_443078.1</a>
Reactivity	Human
Host	Rabbit
Clonality	Polyclonal
Isotype	Rabbit IgG
Calculated MW	82647
Antigen Region	600-629

**EMILIN3 Antibody (C-term) - Additional Information**

**Gene ID** 90187

**Other Names**

EMILIN-3, EMILIN-5, Elastin microfibril interface-located protein 3, Elastin microfibril interfacier 3, Elastin microfibril interface-located protein 5, Elastin microfibril interfacier 5, EMILIN3, C20orf130, EMILIN5

**Target/Specificity**

This EMILIN3 antibody is generated from rabbits immunized with a KLH conjugated synthetic peptide between 600-629 amino acids from the C-terminal region of human EMILIN3.

**Dilution**

WB~~1:1000  
IHC-P~~1:10~50

**Format**

Purified polyclonal antibody supplied in PBS with 0.09% (W/V) sodium azide. This antibody is purified through a protein A column, followed by peptide affinity purification.

**Storage**

Maintain refrigerated at 2-8°C for up to 2 weeks. For long term storage store at -20°C in small aliquots to prevent freeze-thaw cycles.

**Precautions**

EMILIN3 Antibody (C-term) is for research use only and not for use in diagnostic or therapeutic procedures.

**EMILIN3 Antibody (C-term) - Protein Information**

**Name** EMILIN3

**Synonyms** C20orf130, EMILIN5

**Cellular Location**

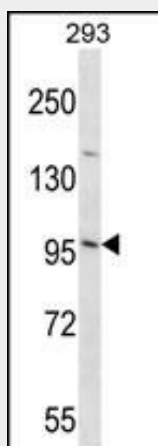
Secreted, extracellular space, extracellular matrix

**EMILIN3 Antibody (C-term) - Protocols**

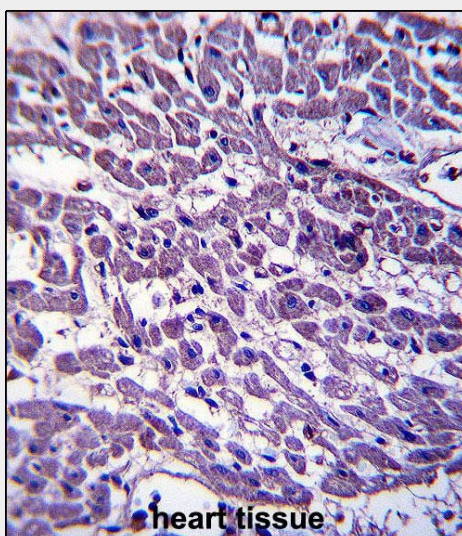
Provided below are standard protocols that you may find useful for product applications.

- [Western Blot](#)
- [Blocking Peptides](#)
- [Dot Blot](#)
- [Immunohistochemistry](#)
- [Immunofluorescence](#)
- [Immunoprecipitation](#)
- [Flow Cytometry](#)
- [Cell Culture](#)

**EMILIN3 Antibody (C-term) - Images**



EMILIN3 Antibody (C-term) (Cat. #AP13662b) western blot analysis in 293 cell line lysates (35ug/lane). This demonstrates the EMILIN3 antibody detected the EMILIN3 protein (arrow).



EMILIN3 Antibody (C-term) (Cat. #AP13662b) immunohistochemistry analysis in formalin fixed and paraffin embedded human heart tissue followed by peroxidase conjugation of the secondary antibody and DAB staining. This data demonstrates the use of EMILIN3 Antibody (C-term) for immunohistochemistry. Clinical relevance has not been evaluated.

#### **EMILIN3 Antibody (C-term) - Background**

The function of this protein remains unknown.

#### **EMILIN3 Antibody (C-term) - References**

- Cao, J. Hybridoma (Larchmt) 26(6):417-421(2007)  
Doi, M., et al. Biochem. Biophys. Res. Commun. 313(4):888-893(2004)  
Leimeister, C., et al. Dev. Biol. 249(2):204-218(2002)  
Deloukas, P., et al. Nature 414(6866):865-871(2001)