

ATG2A Antibody (Center)
Affinity Purified Rabbit Polyclonal Antibody (Pab)
Catalog # AP13648c

Specification

ATG2A Antibody (Center) - Product Information

Application	WB,E
Primary Accession	Q2TAZ0
Other Accession	NP_055919.2
Reactivity	Human
Host	Rabbit
Clonality	Polyclonal
Isotype	Rabbit IgG
Calculated MW	212860
Antigen Region	702-731

ATG2A Antibody (Center) - Additional Information

Gene ID 23130

Other Names

Autophagy-related protein 2 homolog A, ATG2A, KIAA0404

Target/Specificity

This ATG2A antibody is generated from rabbits immunized with a KLH conjugated synthetic peptide between 702-731 amino acids from the Central region of human ATG2A.

Dilution

WB~~1:1000

Format

Purified polyclonal antibody supplied in PBS with 0.09% (W/V) sodium azide. This antibody is purified through a protein A column, followed by peptide affinity purification.

Storage

Maintain refrigerated at 2-8°C for up to 2 weeks. For long term storage store at -20°C in small aliquots to prevent freeze-thaw cycles.

Precautions

ATG2A Antibody (Center) is for research use only and not for use in diagnostic or therapeutic procedures.

ATG2A Antibody (Center) - Protein Information

Name ATG2A {ECO:0000303|PubMed:21887408, ECO:0000312|HGNC:HGNC:29028}

Function Lipid transfer protein involved in autophagosome assembly (PubMed:[28561066](#), PubMed:[30952800](#), PubMed:[31271352](#)). Tethers the edge of the isolation membrane (IM) to the

endoplasmic reticulum (ER) and mediates direct lipid transfer from ER to IM for IM expansion (PubMed:[30952800](#), PubMed:[31271352](#)). Binds to the ER exit site (ERES), which is the membrane source for autophagosome formation, and extracts phospholipids from the membrane source and transfers them to ATG9 (ATG9A or ATG9B) to the IM for membrane expansion (PubMed:[30952800](#), PubMed:[31271352](#)). Lipid transfer activity is enhanced by WIPI1 and WDR45/WIPI4, which promote ATG2A-association with phosphatidylinositol 3-monophosphate (PI3P)-containing membranes (PubMed:[31271352](#)). Also regulates lipid droplets morphology and distribution within the cell (PubMed:[22219374](#), PubMed:[28561066](#)).

Cellular Location

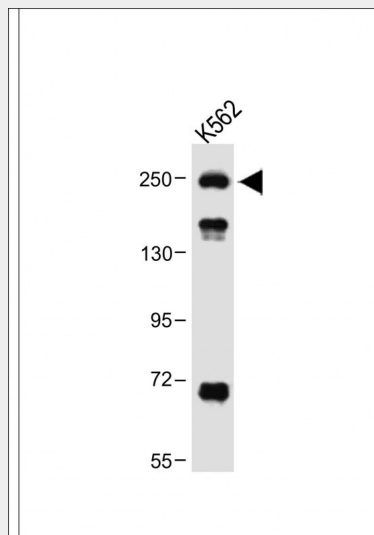
Preautophagosomal structure membrane; Peripheral membrane protein {ECO:0000250|UniProtKB:Q96BY7}. Lipid droplet {ECO:0000250|UniProtKB:Q96BY7}. Endoplasmic reticulum membrane; Peripheral membrane protein {ECO:0000250|UniProtKB:P53855}. Note=Localizes to endoplasmic reticulum-autophagosome contact sites.

ATG2A Antibody (Center) - Protocols

Provided below are standard protocols that you may find useful for product applications.

- [Western Blot](#)
- [Blocking Peptides](#)
- [Dot Blot](#)
- [Immunohistochemistry](#)
- [Immunofluorescence](#)
- [Immunoprecipitation](#)
- [Flow Cytometry](#)
- [Cell Culture](#)

ATG2A Antibody (Center) - Images



Anti-ATG2A Antibody (Center) at 1:1000 dilution + K562 whole cell lysate Lysates/proteins at 20 µg per lane. Secondary Goat Anti-Rabbit IgG, (H+L), Peroxidase conjugated at 1/10000 dilution. Predicted band size : 213 kDa Blocking/Dilution buffer: 5% NFDN/TBST.

ATG2A Antibody (Center) - Background

The function of this protein remains unknown.

ATG2A Antibody (Center) - References

Rose, J. Phd, et al. Mol. Med. (2010) In press :
Guru, S.C., et al. Genome Res. 7(7):725-735(1997)