

RGL1 Antibody (Center)
Affinity Purified Rabbit Polyclonal Antibody (Pab)
Catalog # AP13609c

Specification

RGL1 Antibody (Center) - Product Information

Application	WB,E
Primary Accession	O9NZL6
Other Accession	NP_055964.3
Reactivity	Mouse
Host	Rabbit
Clonality	Polyclonal
Isotype	Rabbit IgG
Calculated MW	86701
Antigen Region	247-275

RGL1 Antibody (Center) - Additional Information

Gene ID 23179

Other Names

Ral guanine nucleotide dissociation stimulator-like 1, RaIGDS-like 1, RGL1, KIAA0959, RGL

Target/Specificity

This RGL1 antibody is generated from rabbits immunized with a KLH conjugated synthetic peptide between 247-275 amino acids from the Central region of human RGL1.

Dilution

WB~~1:1000

Format

Purified polyclonal antibody supplied in PBS with 0.09% (W/V) sodium azide. This antibody is purified through a protein A column, followed by peptide affinity purification.

Storage

Maintain refrigerated at 2-8°C for up to 2 weeks. For long term storage store at -20°C in small aliquots to prevent freeze-thaw cycles.

Precautions

RGL1 Antibody (Center) is for research use only and not for use in diagnostic or therapeutic procedures.

RGL1 Antibody (Center) - Protein Information

Name RGL1

Synonyms KIAA0959, RGL

Function Probable guanine nucleotide exchange factor.

Tissue Location

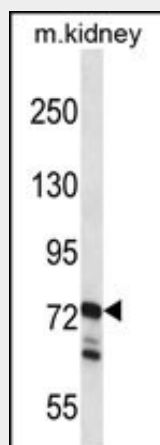
Expressed in a wide variety of tissues with strong expression being seen in the heart, brain, kidney, spleen and testis

RGL1 Antibody (Center) - Protocols

Provided below are standard protocols that you may find useful for product applications.

- [Western Blot](#)
- [Blocking Peptides](#)
- [Dot Blot](#)
- [Immunohistochemistry](#)
- [Immunofluorescence](#)
- [Immunoprecipitation](#)
- [Flow Cytometry](#)
- [Cell Culture](#)

RGL1 Antibody (Center) - Images



RGL1 Antibody (Center) (Cat. #AP13609c) western blot analysis in mouse kidney tissue lysates (35ug/lane). This demonstrates the RGL1 antibody detected the RGL1 protein (arrow).

RGL1 Antibody (Center) - Background

RGL1 is probable guanine nucleotide exchange factor.

RGL1 Antibody (Center) - References

- Rose, J.E., et al. Mol. Med. 16 (7-8), 247-253 (2010) :
Uher, R., et al. Am J Psychiatry 167(5):555-564(2010)
Anney, R.J., et al. Am. J. Med. Genet. B Neuropsychiatr. Genet. 147B (8), 1369-1378 (2008) :
Sood, R., et al. Biochim. Biophys. Acta 1491 (1-3), 285-288 (2000) :
Shao, H., et al. Arch. Biochem. Biophys. 371(2):207-219(1999)