

PODXL2 Antibody (C-term)
Affinity Purified Rabbit Polyclonal Antibody (Pab)
Catalog # AP13602B

Specification

PODXL2 Antibody (C-term) - Product Information

Application	WB,E
Primary Accession	O9NZ53
Other Accession	NP_056535.1
Reactivity	Human
Host	Rabbit
Clonality	Polyclonal
Isotype	Rabbit IgG
Calculated MW	65076
Antigen Region	573-602

PODXL2 Antibody (C-term) - Additional Information

Gene ID 50512

Other Names

Podocalyxin-like protein 2, Endoglycan, PODXL2

Target/Specificity

This PODXL2 antibody is generated from rabbits immunized with a KLH conjugated synthetic peptide between 573-602 amino acids from the C-terminal region of human PODXL2.

Dilution

WB~~1:1000

Format

Purified polyclonal antibody supplied in PBS with 0.09% (W/V) sodium azide. This antibody is purified through a protein A column, followed by peptide affinity purification.

Storage

Maintain refrigerated at 2-8°C for up to 2 weeks. For long term storage store at -20°C in small aliquots to prevent freeze-thaw cycles.

Precautions

PODXL2 Antibody (C-term) is for research use only and not for use in diagnostic or therapeutic procedures.

PODXL2 Antibody (C-term) - Protein Information

Name PODXL2

Function Acts as a ligand for vascular selectins. Mediates rapid rolling of leukocytes over vascular surfaces through high affinity divalent cation-dependent interactions with E-, P- and L-selectins.

Cellular Location

Membrane; Single-pass type I membrane protein

Tissue Location

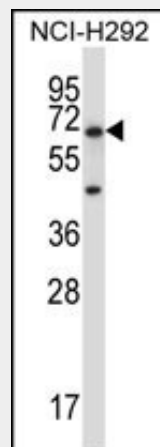
Expressed in T-cells, B-cells and monocytes. Expression is higher on memory and germinal center cells than on naive B-cells (at protein level). Highly expressed in brain. Moderately expressed in pancreas, kidney and lymphoid node. Weakly expressed in liver. Detected in both endothelial cells and CD34+ bone marrow cells

PODXL2 Antibody (C-term) - Protocols

Provided below are standard protocols that you may find useful for product applications.

- [Western Blot](#)
- [Blocking Peptides](#)
- [Dot Blot](#)
- [Immunohistochemistry](#)
- [Immunofluorescence](#)
- [Immunoprecipitation](#)
- [Flow Cytometry](#)
- [Cell Culture](#)

PODXL2 Antibody (C-term) - Images



PODXL2 Antibody (C-term) (Cat. #AP13602b) western blot analysis in NCI-H292 cell line lysates (35ug/lane). This demonstrates the PODXL2 antibody detected the PODXL2 protein (arrow).

PODXL2 Antibody (C-term) - Background

Endoglycan is a disulfide-linked homodimeric membrane protein belonging to the podocalyxin family.

PODXL2 Antibody (C-term) - References

- Kerr, S.C., et al. J. Immunol. 181(2):1480-1490(2008)
Olsen, J.V., et al. Cell 127(3):635-648(2006)
Olsen, J.V., et al. Cell 127(3):635-648(2006)
Clark, H.F., et al. Genome Res. 13(10):2265-2270(2003)
Fieger, C.B., et al. J. Biol. Chem. 278(30):27390-27398(2003)