

**CNIH Antibody (C-term)**  
**Affinity Purified Rabbit Polyclonal Antibody (Pab)**  
**Catalog # AP13594b**

**Specification**

---

**CNIH Antibody (C-term) - Product Information**

Application	WB, IHC-P,E
Primary Accession	<a href="#">O95406</a>
Other Accession	<a href="#">O35372</a> , <a href="#">Q5BIN6</a> , <a href="#">NP_005767.1</a>
Reactivity	Human
Predicted	Bovine, Mouse
Host	Rabbit
Clonality	Polyclonal
Isotype	Rabbit IgG
Calculated MW	16699
Antigen Region	76-104

**CNIH Antibody (C-term) - Additional Information**

**Gene ID** 10175

**Other Names**

Protein cornichon homolog 1, CNIH-1, Cornichon family AMPA receptor auxiliary protein 1, Protein cornichon homolog, T-cell growth-associated molecule 77, TGAM77, CNIH1, CNIH, CNIL

**Target/Specificity**

This CNIH antibody is generated from rabbits immunized with a KLH conjugated synthetic peptide between 76-104 amino acids from the C-terminal region of human CNIH.

**Dilution**

WB~~1:1000  
IHC-P~~1:10~50

**Format**

Purified polyclonal antibody supplied in PBS with 0.09% (W/V) sodium azide. This antibody is purified through a protein A column, followed by peptide affinity purification.

**Storage**

Maintain refrigerated at 2-8°C for up to 2 weeks. For long term storage store at -20°C in small aliquots to prevent freeze-thaw cycles.

**Precautions**

CNIH Antibody (C-term) is for research use only and not for use in diagnostic or therapeutic procedures.

**CNIH Antibody (C-term) - Protein Information**

**Name** CNIH1

**Synonyms** CNIH, CNIL

**Function** Involved in the selective transport and maturation of TGF- alpha family proteins.

**Cellular Location**

Endoplasmic reticulum membrane; Multi-pass membrane protein. Golgi apparatus membrane.  
Note=Located primarily in the ER; may cycle between the ER and the Golgi apparatus

**Tissue Location**

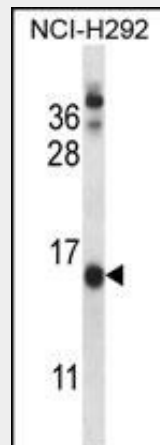
Highly expressed in heart, liver, skeletal muscle, pancreas, adrenal medulla and cortex, thyroid, testis, spleen, appendix, peripheral blood lymphocytes and bone marrow. Lower expression found in brain, placenta, lung, kidney, ovary, small intestine, stomach, lymph node, thymus and fetal liver. Expression is up-regulated in dorsolateral prefrontal cortex of patients with schizophrenia (postmortem brain study).

**CNIH Antibody (C-term) - Protocols**

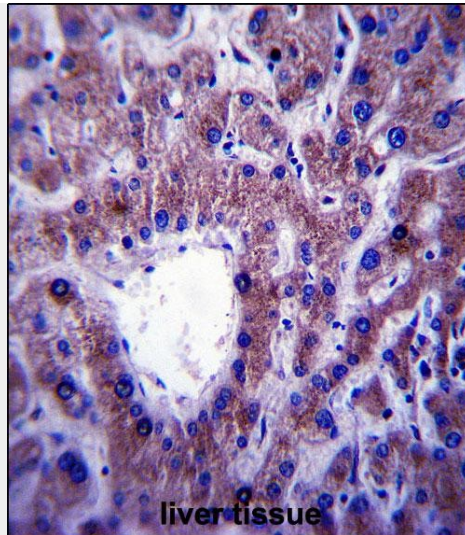
Provided below are standard protocols that you may find useful for product applications.

- [Western Blot](#)
- [Blocking Peptides](#)
- [Dot Blot](#)
- [Immunohistochemistry](#)
- [Immunofluorescence](#)
- [Immunoprecipitation](#)
- [Flow Cytometry](#)
- [Cell Culture](#)

**CNIH Antibody (C-term) - Images**



CNIH Antibody (C-term) (Cat. #AP13594b) western blot analysis in NCI-H292 cell line lysates (35ug/lane). This demonstrates the CNIH antibody detected the CNIH protein (arrow).



CNIH Antibody (C-term) (Cat. #AP13594b) immunohistochemistry analysis in formalin fixed and paraffin embedded human liver tissue followed by peroxidase conjugation of the secondary antibody and DAB staining. This data demonstrates the use of CNIH Antibody (C-term) for immunohistochemistry. Clinical relevance has not been evaluated.

#### **CNIH Antibody (C-term) - Background**

CNIH is involved in the selective transport and maturation of TGF-alpha family proteins.

#### **CNIH Antibody (C-term) - References**

- Castro, C.P., et al. J. Cell. Sci. 120 (PT 14), 2454-2466 (2007) :
- Clark, H.F., et al. Genome Res. 13(10):2265-2270(2003)
- Utku, N., et al. Biochim. Biophys. Acta 1449(3):203-210(1999)