

PLXNC1 Antibody (C-term)
Affinity Purified Rabbit Polyclonal Antibody (Pab)
Catalog # AP13576b

Specification

PLXNC1 Antibody (C-term) - Product Information

Application	WB, IHC-P,E
Primary Accession	O60486
Other Accession	O9OZC2 , NP_005752.1
Reactivity	Mouse
Host	Rabbit
Clonality	Polyclonal
Isotype	Rabbit IgG
Calculated MW	175742
Antigen Region	1025-1054

PLXNC1 Antibody (C-term) - Additional Information

Gene ID 10154

Other Names

Plexin-C1, Virus-encoded semaphorin protein receptor, CD232, PLXNC1, VESPR

Target/Specificity

This PLXNC1 antibody is generated from rabbits immunized with a KLH conjugated synthetic peptide between 1025-1054 amino acids from the C-terminal region of human PLXNC1.

Dilution

WB~~1:1000
IHC-P~~1:10~50

Format

Purified polyclonal antibody supplied in PBS with 0.09% (W/V) sodium azide. This antibody is purified through a protein A column, followed by peptide affinity purification.

Storage

Maintain refrigerated at 2-8°C for up to 2 weeks. For long term storage store at -20°C in small aliquots to prevent freeze-thaw cycles.

Precautions

PLXNC1 Antibody (C-term) is for research use only and not for use in diagnostic or therapeutic procedures.

PLXNC1 Antibody (C-term) - Protein Information

Name PLXNC1

Synonyms VESPR

Function Receptor for SEMA7A, for smallpox semaphorin A39R, vaccinia virus semaphorin A39R and for herpesvirus Sema protein. Binding of semaphorins triggers cellular responses leading to the rearrangement of the cytoskeleton and to secretion of IL6 and IL8 (By similarity).

Cellular Location

Membrane; Single-pass type I membrane protein

Tissue Location

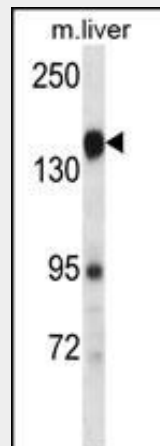
Detected in heart, brain, lung, spleen and placenta.

PLXNC1 Antibody (C-term) - Protocols

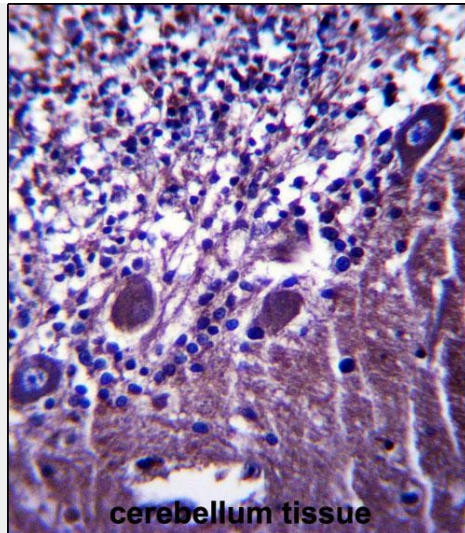
Provided below are standard protocols that you may find useful for product applications.

- [Western Blot](#)
- [Blocking Peptides](#)
- [Dot Blot](#)
- [Immunohistochemistry](#)
- [Immunofluorescence](#)
- [Immunoprecipitation](#)
- [Flow Cytometry](#)
- [Cell Culture](#)

PLXNC1 Antibody (C-term) - Images



PLXNC1 Antibody (C-term) (Cat. #AP13576b) western blot analysis in mouse liver tissue lysates (35ug/lane). This demonstrates the PLXNC1 antibody detected the PLXNC1 protein (arrow).



PLXNC1 Antibody (C-term) (Cat. #AP13576b) immunohistochemistry analysis in formalin fixed and paraffin embedded human cerebellum tissue followed by peroxidase conjugation of the secondary antibody and DAB staining. This data demonstrates the use of PLXNC1 Antibody (C-term) for immunohistochemistry. Clinical relevance has not been evaluated.

PLXNC1 Antibody (C-term) - Background

PLXNC1 is a receptor for vaccinia virus semaphorin A39R and for herpesvirus Sema protein. Binding of viral semaphorins triggers cellular responses leading to the rearrangement of the cytoskeleton and to secretion of IL6 and IL8 (By similarity).

PLXNC1 Antibody (C-term) - References

- Liu, H., et al. Cell 142(5):749-761(2010)
- Lazova, R., et al. Am J Dermatopathol 31(2):177-181(2009)
- Scott, G.A., et al. J. Invest. Dermatol. 129(4):954-963(2009)
- Scott, G.A., et al. J. Invest. Dermatol. 128(1):151-161(2008)
- Li, Y., et al. PLoS ONE 3 (7), E2707 (2008) :