

ALPPL2 Antibody (N-term)
Affinity Purified Rabbit Polyclonal Antibody (Pab)
Catalog # AP13552a

Specification

ALPPL2 Antibody (N-term) - Product Information

Application	WB, IHC-P,E
Primary Accession	P10696
Other Accession	NP_112603.2
Reactivity	Human
Host	Rabbit
Clonality	Polyclonal
Isotype	Rabbit IgG
Calculated MW	57377
Antigen Region	58-86

ALPPL2 Antibody (N-term) - Additional Information

Gene ID 251

Other Names

Alkaline phosphatase, placental-like, ALP-1, Alkaline phosphatase Nagao isozyme, Germ cell alkaline phosphatase, GCAP, Placental alkaline phosphatase-like, PLAP-like, ALPPL2, ALPPL

Target/Specificity

This ALPPL2 antibody is generated from rabbits immunized with a KLH conjugated synthetic peptide between 58-86 amino acids from the N-terminal region of human ALPPL2.

Dilution

WB~~1:1000
IHC-P~~1:10~50

Format

Purified polyclonal antibody supplied in PBS with 0.09% (W/V) sodium azide. This antibody is purified through a protein A column, followed by peptide affinity purification.

Storage

Maintain refrigerated at 2-8°C for up to 2 weeks. For long term storage store at -20°C in small aliquots to prevent freeze-thaw cycles.

Precautions

ALPPL2 Antibody (N-term) is for research use only and not for use in diagnostic or therapeutic procedures.

ALPPL2 Antibody (N-term) - Protein Information

Name ALPG ([HGNC:441](#))

Function Alkaline phosphatase that can hydrolyze various phosphate compounds.

Cellular Location

Cell membrane; Lipid-anchor, GPI-anchor.

Tissue Location

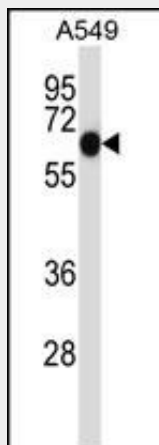
Trace amounts in the testis and thymus, and in elevated amounts in germ cell tumors

ALPPL2 Antibody (N-term) - Protocols

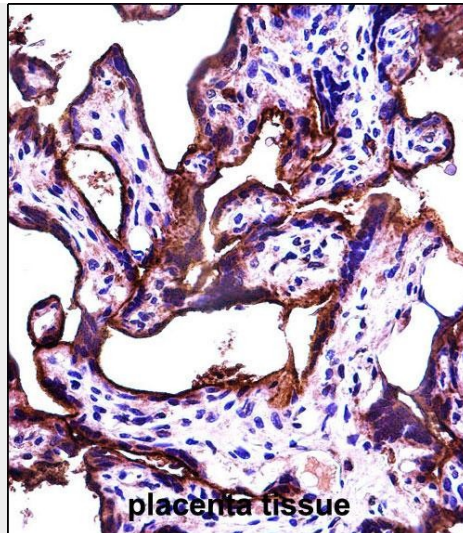
Provided below are standard protocols that you may find useful for product applications.

- [Western Blot](#)
- [Blocking Peptides](#)
- [Dot Blot](#)
- [Immunohistochemistry](#)
- [Immunofluorescence](#)
- [Immunoprecipitation](#)
- [Flow Cytometry](#)
- [Cell Culture](#)

ALPPL2 Antibody (N-term) - Images



ALPPL2 Antibody (N-term) (Cat. #AP13552a) western blot analysis in A549 cell line lysates (35ug/lane). This demonstrates the ALPPL2 antibody detected the ALPPL2 protein (arrow).



ALPPL2 Antibody (N-term) (Cat. #AP13552a) immunohistochemistry analysis in formalin fixed and paraffin embedded human placenta tissue followed by peroxidase conjugation of the secondary antibody and DAB staining. This data demonstrates the use of ALPPL2 Antibody (N-term) for immunohistochemistry. Clinical relevance has not been evaluated.

ALPPL2 Antibody (N-term) - Background

There are at least four distinct but related alkaline phosphatases: intestinal, placental, placental-like, and liver/bone/kidney (tissue non-specific). The product of this gene is a membrane bound glycosylated enzyme, localized to testis, thymus and certain germ cell tumors, that is closely related to both the placental and intestinal forms of alkaline phosphatase.

ALPPL2 Antibody (N-term) - References

Peltari, K., et al. *Arthritis Rheum.* 54(10):3254-3266(2006)
Nakano, T., et al. *Biochem. Biophys. Res. Commun.* 341(1):33-38(2006)
Hillier, L.W., et al. *Nature* 434(7034):724-731(2005)
Le Du, M.H., et al. *J. Biol. Chem.* 277(51):49808-49814(2002)
Kozlenkov, A., et al. *J. Biol. Chem.* 277(25):22992-22999(2002)

ALPPL2 Antibody (N-term) - Citations

- [IL-1 Receptor Antagonist Protects the Osteogenesis Capability of Gingival-Derived Stem/Progenitor Cells under Inflammatory Microenvironment Induced by Lipopolysaccharides](#)
- [Long Non-Coding RNA Nuclear-Enriched Abundant Transcript 1 \(NEAT1\) Represses Proliferation of Trophoblast Cells in Rats with Preeclampsia via the MicroRNA-373/FLT1 Axis](#)