

**CTAG1A Antibody (N-term)**  
**Affinity Purified Rabbit Polyclonal Antibody (Pab)**  
**Catalog # AP13527a****Specification**

---

**CTAG1A Antibody (N-term) - Product Information**

Application	<b>WB, IHC-P,E</b>
Primary Accession	<a href="#">P78358</a>
Other Accession	<a href="#">NP_640343.1</a> , <a href="#">NP_001318.1</a>
Reactivity	<b>Human</b>
Host	<b>Rabbit</b>
Clonality	<b>Polyclonal</b>
Isotype	<b>Rabbit IgG</b>
Antigen Region	<b>1-30</b>

**CTAG1A Antibody (N-term) - Additional Information****Gene ID** 1485;246100**Other Names**

Cancer/testis antigen 1, Autoimmunogenic cancer/testis antigen NY-ESO-1, Cancer/testis antigen 61, CT61, L antigen family member 2, LAGE-2, CTAG1A, CTAG, CTAG1, ESO1, LAGE2, LAGE2A

**Target/Specificity**

This CTAG1A antibody is generated from rabbits immunized with a KLH conjugated synthetic peptide between 1-30 amino acids from the N-terminal region of human CTAG1A.

**Dilution**

WB~~1:1000

IHC-P~~1:250

**Format**

Purified polyclonal antibody supplied in PBS with 0.09% (W/V) sodium azide. This antibody is purified through a protein A column, followed by peptide affinity purification.

**Storage**

Maintain refrigerated at 2-8°C for up to 2 weeks. For long term storage store at -20°C in small aliquots to prevent freeze-thaw cycles.

**Precautions**

CTAG1A Antibody (N-term) is for research use only and not for use in diagnostic or therapeutic procedures.

**CTAG1A Antibody (N-term) - Protein Information****Name** CTAG1A**Synonyms** CTAG, CTAG1, ESO1, LAGE2, LAGE2A

**Cellular Location**

Cytoplasm.

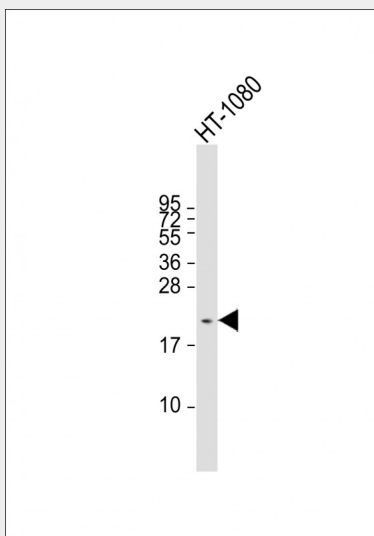
**Tissue Location**

Expressed in testis and ovary and in a wide variety of cancers. Detected in uterine myometrium. Expressed from 18 weeks until birth in human fetal testis. In the adult testis, is strongly expressed in spermatogonia and in primary spermatocytes, but not in post-meiotic cells or in testicular somatic cells (at protein level)

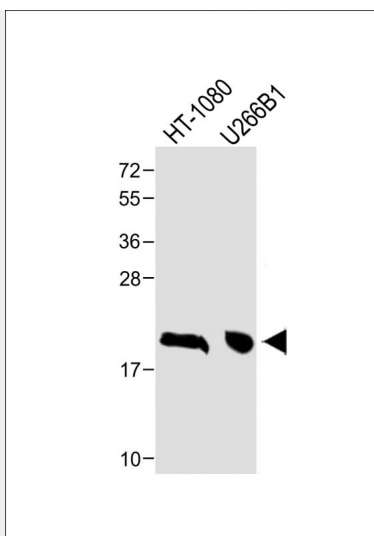
**CTAG1A Antibody (N-term) - Protocols**

Provided below are standard protocols that you may find useful for product applications.

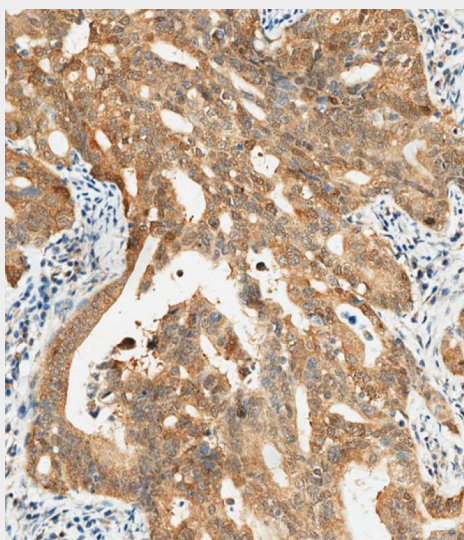
- [Western Blot](#)
- [Blocking Peptides](#)
- [Dot Blot](#)
- [Immunohistochemistry](#)
- [Immunofluorescence](#)
- [Immunoprecipitation](#)
- [Flow Cytometry](#)
- [Cell Culture](#)

**CTAG1A Antibody (N-term) - Images**

Anti-CTAG1A Antibody (N-term) at 1:2000 dilution + HT-1080 whole cell lysate Lysates/proteins at 20 µg per lane. Secondary Goat Anti-Rabbit IgG, (H+L), Peroxidase conjugated at 1/10000 dilution. Predicted band size : 18 kDa Blocking/Dilution buffer: 5% NFD/MTBST.



All lanes : Anti-CTAG1A Antibody (N-term) at 1:1000 dilution Lane 1: HT-1080 whole cell lysate  
Lane 2: U266B1 whole cell lysate Lysates/proteins at 20 µg per lane. Secondary Goat Anti-Rabbit IgG, (H+L), Peroxidase conjugated at 1/10000 dilution. Predicted band size : 18 kDa  
Blocking/Dilution buffer: 5% NFD/MTBST.



AP13527a staining CTAG1A in human gastric carcinoma tissue sections by Immunohistochemistry (IHC-P - paraformaldehyde-fixed, paraffin-embedded sections). Samples were incubated with primary antibody (1/250) for 1 hours at room temperature. A undiluted biotinylated goat polyvalent antibody was used as the secondary antibody.

#### **CTAG1A Antibody (N-term) - Background**

CTAG1A is an identical copy of the CTAG1B gene (MIM 300156) (Aradhya et al., 2001 [PubMed 11709543]).[supplied by OMIM].

#### **CTAG1A Antibody (N-term) - References**

Yoshida, N., et al. Int. J. Oncol. 28(5):1089-1098(2006)  
Cho, H.J., et al. Cancer Immun. 6, 12 (2006) :  
Ross, M.T., et al. Nature 434(7031):325-337(2005)  
Scanlan, M.J., et al. Immunol. Rev. 188, 22-32 (2002) :

Satie, A.P., et al. Lab. Invest. 82(6):775-780(2002)