

CASS4 Antibody (C-term)
Affinity Purified Rabbit Polyclonal Antibody (Pab)
Catalog # AP13515b**Specification**

CASS4 Antibody (C-term) - Product Information

Application	WB,E
Primary Accession	O9NQ75
Other Accession	NP_001157588.1 , NP_001157587.1 , NP_001157586.1 , NP_065089.2
Reactivity	Human
Host	Rabbit
Clonality	Polyclonal
Isotype	Rabbit IgG
Calculated MW	87144
Antigen Region	610-639

CASS4 Antibody (C-term) - Additional Information**Gene ID** 57091**Other Names**

Cas scaffolding protein family member 4, HEF-like protein, HEF1-EFS-p130Cas-like protein, HEPL, CASS4, C20orf32, HEFL

Target/Specificity

This CASS4 antibody is generated from rabbits immunized with a KLH conjugated synthetic peptide between 610-639 amino acids from the C-terminal region of human CASS4.

Dilution

WB~~1:1000

Format

Purified polyclonal antibody supplied in PBS with 0.09% (W/V) sodium azide. This antibody is purified through a protein A column, followed by peptide affinity purification.

Storage

Maintain refrigerated at 2-8°C for up to 2 weeks. For long term storage store at -20°C in small aliquots to prevent freeze-thaw cycles.

Precautions

CASS4 Antibody (C-term) is for research use only and not for use in diagnostic or therapeutic procedures.

CASS4 Antibody (C-term) - Protein Information**Name** CASS4

Synonyms C20orf32, HEFL

Function Docking protein that plays a role in tyrosine kinase-based signaling related to cell adhesion and cell spreading. Regulates PTK2/FAK1 activity, focal adhesion integrity, and cell spreading.

Cellular Location

Cytoplasm, cytoskeleton. Cell junction, focal adhesion

Tissue Location

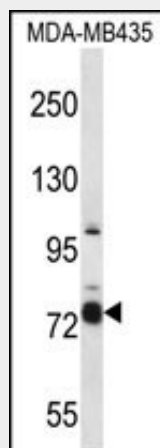
Expressed abundantly in lung and spleen. Also highly expressed in ovarian and leukemia cell lines

CASS4 Antibody (C-term) - Protocols

Provided below are standard protocols that you may find useful for product applications.

- [Western Blot](#)
- [Blocking Peptides](#)
- [Dot Blot](#)
- [Immunohistochemistry](#)
- [Immunofluorescence](#)
- [Immunoprecipitation](#)
- [Flow Cytometry](#)
- [Cell Culture](#)

CASS4 Antibody (C-term) - Images



CASS4 Antibody (C-term) (Cat. #AP13515b) western blot analysis in MDA-MB435 cell line lysates (35ug/lane). This demonstrates the CASS4 antibody detected the CASS4 protein (arrow).

CASS4 Antibody (C-term) - Background

Possible docking protein which may play a role for tyrosine-kinase-based signaling related to cell adhesion. Regulates FAK activity, focal adhesion integrity, and cell spreading.

CASS4 Antibody (C-term) - References

- Singh, M.K., et al. Mol. Biol. Cell 19(4):1627-1636(2008)
Rikova, K., et al. Cell 131(6):1190-1203(2007)
Deloukas, P., et al. Nature 414(6866):865-871(2001)