

**TLE6 Antibody (N-term )**  
**Affinity Purified Rabbit Polyclonal Antibody (Pab)**  
**Catalog # AP13485a**

**Specification**

---

**TLE6 Antibody (N-term ) - Product Information**

Application	<b>WB, IHC-P,E</b>
Primary Accession	<a href="#">O9H808</a>
Other Accession	<a href="#">NP_079036.1</a> , <a href="#">NP_001137458.1</a>
Reactivity	<b>Human</b>
Host	<b>Rabbit</b>
Clonality	<b>Polyclonal</b>
Isotype	<b>Rabbit IgG</b>
Calculated MW	<b>63473</b>
Antigen Region	<b>30-58</b>

**TLE6 Antibody (N-term ) - Additional Information**

**Gene ID** 79816

**Other Names**

Transducin-like enhancer protein 6, TLE6

**Target/Specificity**

This TLE6 antibody is generated from rabbits immunized with a KLH conjugated synthetic peptide between 30-58 amino acids from the N-terminal region of human TLE6.

**Dilution**

WB~~1:1000  
IHC-P~~1:10~50

**Format**

Purified polyclonal antibody supplied in PBS with 0.09% (W/V) sodium azide. This antibody is purified through a protein A column, followed by peptide affinity purification.

**Storage**

Maintain refrigerated at 2-8°C for up to 2 weeks. For long term storage store at -20°C in small aliquots to prevent freeze-thaw cycles.

**Precautions**

TLE6 Antibody (N-term ) is for research use only and not for use in diagnostic or therapeutic procedures.

**TLE6 Antibody (N-term ) - Protein Information**

**Name** TLE6

**Function** Regulates spermatogonia proliferation and cell cycle progression, potentially via

regulation of cell cycle regulatory genes such as; CEBPB, CEBPA, CSF3, PCNA, and CDK4 (By similarity). Suppresses FOXG1/BF-1-mediated transcriptional repression by inhibiting interaction of the transcriptional corepressor TLE1 with FOXG1 which promotes cortical neuron differentiation (By similarity). Acts as a transcriptional corepressor of NFATC1-mediated gene expression by contributing to PAX6-mediated repression (By similarity).

#### Cellular Location

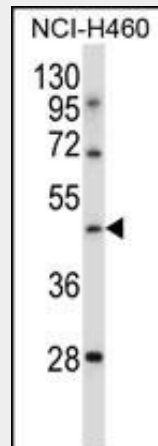
Nucleus {ECO:0000250|UniProtKB:Q9WVB3}. [Isoform 2]: Cytoplasm

#### TLE6 Antibody (N-term ) - Protocols

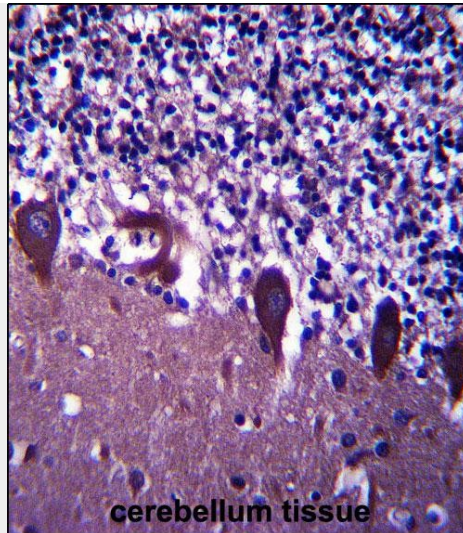
Provided below are standard protocols that you may find useful for product applications.

- [Western Blot](#)
- [Blocking Peptides](#)
- [Dot Blot](#)
- [Immunohistochemistry](#)
- [Immunofluorescence](#)
- [Immunoprecipitation](#)
- [Flow Cytometry](#)
- [Cell Culture](#)

#### TLE6 Antibody (N-term ) - Images



TLE6 Antibody (N-term ) (Cat. #AP13485a) western blot analysis in NCI-H460 cell line lysates (35ug/lane). This demonstrates the TLE6 antibody detected the TLE6 protein (arrow).



TLE6 Antibody (N-term) (Cat. #AP13485a) immunohistochemistry analysis in formalin fixed and paraffin embedded human cerebellum tissue followed by peroxidase conjugation of the secondary antibody and DAB staining. This data demonstrates the use of TLE6 Antibody (N-term) for immunohistochemistry. Clinical relevance has not been evaluated.

#### **TLE6 Antibody (N-term ) - Background**

As a member of the subcortical maternal complex (SCMC), plays an essential role for zygotes to progress beyond the first embryonic cell divisions (By similarity).

#### **TLE6 Antibody (N-term ) - References**

Chen, P.C., et al. PLoS Genet. 4 (6), E1000092 (2008) :  
Dang, J., et al. Mol. Cell. Biol. 21(17):5935-5945(2001)