

METTL23 Antibody (C-term)
Affinity Purified Rabbit Polyclonal Antibody (Pab)
Catalog # AP13464b

Specification

METTL23 Antibody (C-term) - Product Information

Application	WB,E
Primary Accession	Q86XA0
Other Accession	Q5R JL2 , A2AA28 , NP_001073979.2
Reactivity	Human
Predicted	Mouse, Rat
Host	Rabbit
Clonality	Polyclonal
Isotype	Rabbit IgG
Antigen Region	138-166

METTL23 Antibody (C-term) - Additional Information

Gene ID 124512

Other Names

Methyltransferase-like protein 23, 211-, METTL23, C17orf95

Target/Specificity

This C17orf95 antibody is generated from rabbits immunized with a KLH conjugated synthetic peptide between 138-166 amino acids from the C-terminal region of human C17orf95.

Dilution

WB~~1:1000

Format

Purified polyclonal antibody supplied in PBS with 0.09% (W/V) sodium azide. This antibody is purified through a protein A column, followed by peptide affinity purification.

Storage

Maintain refrigerated at 2-8°C for up to 2 weeks. For long term storage store at -20°C in small aliquots to prevent freeze-thaw cycles.

Precautions

METTL23 Antibody (C-term) is for research use only and not for use in diagnostic or therapeutic procedures.

METTL23 Antibody (C-term) - Protein Information

Name METTL23 {ECO:0000303|PubMed:24501276, ECO:0000312|HGNC:HGNC:26988}

Function Histone methyltransferase that dimethylates histone H3 at 'Arg-17', forming asymmetric dimethylarginine (H3R17me2a), leading to activate transcription via chromatin remodeling (By

similarity). Maternal factor involved in epigenetic chromatin reprogramming of the paternal genome in the zygote: mediates H3R17me2a, promoting histone H3.3 incorporation in the male pronucleus, leading to TET3 recruitment and subsequent DNA demethylation (By similarity).

Cellular Location

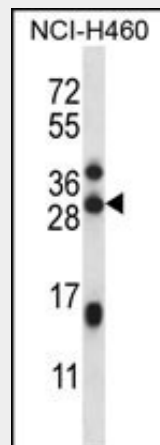
Nucleus. Cytoplasm Note=Localizes in male and female zygote pronucleus and cytoplasm {ECO:0000250|UniProtKB:A2AA28}

METTL23 Antibody (C-term) - Protocols

Provided below are standard protocols that you may find useful for product applications.

- [Western Blot](#)
- [Blocking Peptides](#)
- [Dot Blot](#)
- [Immunohistochemistry](#)
- [Immunofluorescence](#)
- [Immunoprecipitation](#)
- [Flow Cytometry](#)
- [Cell Culture](#)

METTL23 Antibody (C-term) - Images



C17orf95 Antibody (C-term) (Cat. #AP13464b) western blot analysis in NCI-H460 cell line lysates (35ug/lane). This demonstrates the C17orf95 antibody detected the C17orf95 protein (arrow).

METTL23 Antibody (C-term) - Background

The specific function of the protein remains unknown.

METTL23 Antibody (C-term) - References

Strausberg, R.L., et al. Proc. Natl. Acad. Sci. U.S.A. 99(26):16899-16903(2002)

METTL23 Antibody (C-term) - Citations

- [Disruption of the methyltransferase-like 23 gene METTL23 causes mild autosomal recessive intellectual disability.](#)