

CTGF Antibody (Center)
Affinity Purified Rabbit Polyclonal Antibody (Pab)
Catalog # AP13399C

Specification

CTGF Antibody (Center) - Product Information

Application	WB, IHC-P,E
Primary Accession	P29279
Other Accession	O9R1E9 , O19113 , P29268 , NP_001892.1
Reactivity	Human
Predicted	Mouse, Pig, Rat
Host	Rabbit
Clonality	Polyclonal
Isotype	Rabbit IgG
Calculated MW	38091
Antigen Region	166-193

CTGF Antibody (Center) - Additional Information

Gene ID 1490

Other Names

Connective tissue growth factor, CCN family member 2, Hypertrophic chondrocyte-specific protein 24, Insulin-like growth factor-binding protein 8, IBP-8, IGF-binding protein 8, IGFBP-8, CTGF, CCN2, HCS24, IGFBP8

Target/Specificity

This CTGF antibody is generated from rabbits immunized with a KLH conjugated synthetic peptide between 166-193 amino acids from the Central region of human CTGF.

Dilution

WB~~1:1000
IHC-P~~1:10~50

Format

Purified polyclonal antibody supplied in PBS with 0.09% (W/V) sodium azide. This antibody is purified through a protein A column, followed by peptide affinity purification.

Storage

Maintain refrigerated at 2-8°C for up to 2 weeks. For long term storage store at -20°C in small aliquots to prevent freeze-thaw cycles.

Precautions

CTGF Antibody (Center) is for research use only and not for use in diagnostic or therapeutic procedures.

CTGF Antibody (Center) - Protein Information

Name CCN2 ([HGNC:2500](#))

Function Major connective tissue mitoatractant secreted by vascular endothelial cells. Promotes proliferation and differentiation of chondrocytes. Mediates heparin- and divalent cation-dependent cell adhesion in many cell types including fibroblasts, myofibroblasts, endothelial and epithelial cells. Enhances fibroblast growth factor- induced DNA synthesis.

Cellular Location

Secreted, extracellular space, extracellular matrix {ECO:0000250|UniProtKB:P29268}. Secreted {ECO:0000250|UniProtKB:P29268}

Tissue Location

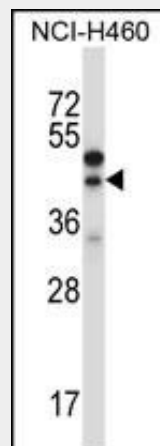
Expressed in bone marrow and thymic cells. Also expressed one of two Wilms tumors tested.

CTGF Antibody (Center) - Protocols

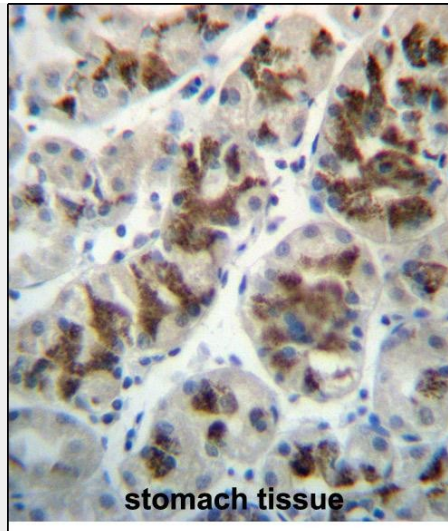
Provided below are standard protocols that you may find useful for product applications.

- [Western Blot](#)
- [Blocking Peptides](#)
- [Dot Blot](#)
- [Immunohistochemistry](#)
- [Immunofluorescence](#)
- [Immunoprecipitation](#)
- [Flow Cytometry](#)
- [Cell Culture](#)

CTGF Antibody (Center) - Images



CTGF Antibody (Center) (Cat. #AP13399c) western blot analysis in NCI-H460 cell line lysates (35ug/lane). This demonstrates the CTGF antibody detected the CTGF protein (arrow).



CTGF Antibody (Center) (Cat. #AP13399c) immunohistochemistry analysis in formalin fixed and paraffin embedded human stomach tissue followed by peroxidase conjugation of the secondary antibody and DAB staining. This data demonstrates the use of CTGF Antibody (Center) for immunohistochemistry. Clinical relevance has not been evaluated.

CTGF Antibody (Center) - Background

The protein encoded by this gene is a mitogen that is secreted by vascular endothelial cells. The encoded protein plays a role in chondrocyte proliferation and differentiation, cell adhesion in many cell types, and is related to platelet-derived growth factor. Certain polymorphisms in this gene have been linked with a higher incidence of systemic sclerosis. [provided by RefSeq].

CTGF Antibody (Center) - References

Behrens, M.E., et al. *Oncogene* 29(42):5667-5677(2010)
Cunningham, J.L., et al. *Eur. J. Endocrinol.* 163(4):691-697(2010)
Ito, Y., et al. *Am. J. Physiol. Renal Physiol.* 299 (3), F545-F558 (2010) :
Adler, S.G., et al. *Clin J Am Soc Nephrol* 5(8):1420-1428(2010)
Johnatty, S.E., et al. *PLoS Genet.* 6 (7), E1001016 (2010) :