

KCTD10 Antibody (C-term)
Affinity Purified Rabbit Polyclonal Antibody (Pab)
Catalog # AP13390B

Specification

KCTD10 Antibody (C-term) - Product Information

Application	WB, IHC-P, FC,E
Primary Accession	O9H3F6
Other Accession	NP_114160.1
Reactivity	Human
Host	Rabbit
Clonality	Polyclonal
Isotype	Rabbit IgG
Calculated MW	35432
Antigen Region	273-301

KCTD10 Antibody (C-term) - Additional Information

Gene ID 83892

Other Names

BTB/POZ domain-containing adapter for CUL3-mediated RhoA degradation protein 3, hBACURD3, BTB/POZ domain-containing protein KCTD10, Potassium channel tetramerization domain-containing protein 10, KCTD10, ULR061

Target/Specificity

This KCTD10 antibody is generated from rabbits immunized with a KLH conjugated synthetic peptide between 273-301 amino acids from the C-terminal region of human KCTD10.

Dilution

WB~~1:1000
IHC-P~~1:10~50
FC~~1:10~50

Format

Purified polyclonal antibody supplied in PBS with 0.09% (W/V) sodium azide. This antibody is purified through a protein A column, followed by peptide affinity purification.

Storage

Maintain refrigerated at 2-8°C for up to 2 weeks. For long term storage store at -20°C in small aliquots to prevent freeze-thaw cycles.

Precautions

KCTD10 Antibody (C-term) is for research use only and not for use in diagnostic or therapeutic procedures.

KCTD10 Antibody (C-term) - Protein Information

Name KCTD10

Synonyms ULR061

Function Substrate-specific adapter of a BCR (BTB-CUL3-RBX1) E3 ubiquitin-protein ligase complex. The BCR(BACURD3) E3 ubiquitin ligase complex mediates the ubiquitination of target proteins, leading to their degradation by the proteasome (By similarity).

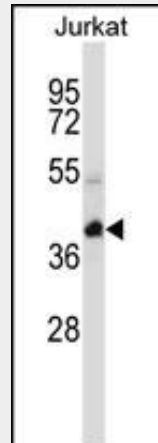
Cellular Location
Nucleus.

KCTD10 Antibody (C-term) - Protocols

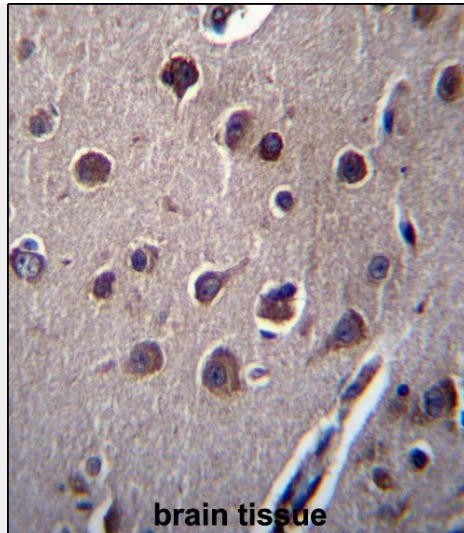
Provided below are standard protocols that you may find useful for product applications.

- [Western Blot](#)
- [Blocking Peptides](#)
- [Dot Blot](#)
- [Immunohistochemistry](#)
- [Immunofluorescence](#)
- [Immunoprecipitation](#)
- [Flow Cytometry](#)
- [Cell Culture](#)

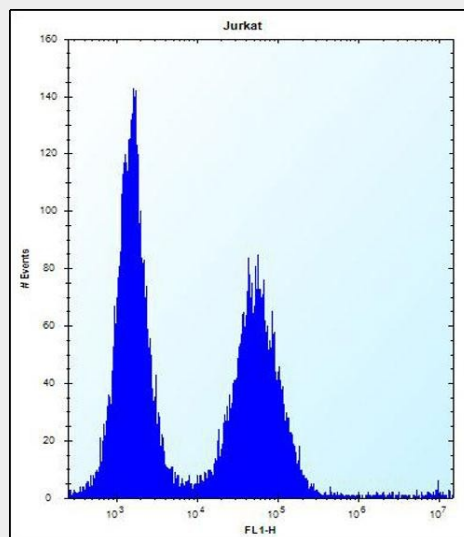
KCTD10 Antibody (C-term) - Images



KCTD10 Antibody (C-term) (Cat. #AP13390b) western blot analysis in Jurkat cell line lysates (35ug/lane). This demonstrates the KCTD10 antibody detected the KCTD10 protein (arrow).



KCTD10 Antibody (C-term) (Cat. #AP13390b) immunohistochemistry analysis in formalin fixed and paraffin embedded human brain tissue followed by peroxidase conjugation of the secondary antibody and DAB staining. This data demonstrates the use of KCTD10 Antibody (C-term) for immunohistochemistry. Clinical relevance has not been evaluated.



KCTD10 Antibody (C-term) (Cat. #AP13390b) flow cytometric analysis of Jurkat cells (right histogram) compared to a negative control cell (left histogram). FITC-conjugated donkey-anti-rabbit secondary antibodies were used for the analysis.

KCTD10 Antibody (C-term) - Background

Substrate-specific adapter of a BCR (BTB-CUL3-RBX1) E3 ubiquitin-protein ligase complex. The BCR (BACURD3) E3 ubiquitin ligase complex mediates the ubiquitination of target proteins, leading to their degradation by the proteasome (By similarity).

KCTD10 Antibody (C-term) - References

- Keebler, M.E., et al. *Circ Cardiovasc Genet* 3(4):358-364(2010)
- Rose, J.E., et al. *Mol. Med.* 16 (7-8), 247-253 (2010) :
- Junyent, M., et al. *Am. J. Clin. Nutr.* 90(3):686-694(2009)
- Wang, Y., et al. *J. Cell. Biochem.* 106(3):409-413(2009)
- Liu, R., et al. *FEBS J.* 276(4):1114-1124(2009)