

**APCDD1 Antibody (N-term)**  
**Affinity Purified Rabbit Polyclonal Antibody (Pab)**  
**Catalog # AP13356a**

**Specification**

---

**APCDD1 Antibody (N-term) - Product Information**

Application	<b>WB, IHC-P,E</b>
Primary Accession	<a href="#">O8J025</a>
Other Accession	<a href="#">O66KI8</a> , <a href="#">NP_694545.1</a>
Reactivity	<b>Human</b>
Predicted	<b>Xenopus</b>
Host	<b>Rabbit</b>
Clonality	<b>Polyclonal</b>
Isotype	<b>Rabbit IgG</b>
Antigen Region	<b>69-98</b>

**APCDD1 Antibody (N-term) - Additional Information**

**Gene ID** 147495

**Other Names**

Protein APCDD1, Adenomatosis polyposis coli down-regulated 1 protein, APCDD1 (<a href="http://www.genenames.org/cgi-bin/gene\_symbol\_report?hgnc\_id=15718" target="\_blank">HGNC:15718</a>)

**Target/Specificity**

This APCDD1 antibody is generated from rabbits immunized with a KLH conjugated synthetic peptide between 69-98 amino acids from the N-terminal region of human APCDD1.

**Dilution**

WB~~1:1000  
IHC-P~~1:10~50

**Format**

Purified polyclonal antibody supplied in PBS with 0.09% (W/V) sodium azide. This antibody is purified through a protein A column, followed by peptide affinity purification.

**Storage**

Maintain refrigerated at 2-8°C for up to 2 weeks. For long term storage store at -20°C in small aliquots to prevent freeze-thaw cycles.

**Precautions**

APCDD1 Antibody (N-term) is for research use only and not for use in diagnostic or therapeutic procedures.

**APCDD1 Antibody (N-term) - Protein Information**

**Name** APCDD1 ([HGNC:15718](#))

**Function** Negative regulator of the Wnt signaling pathway. Inhibits Wnt signaling in a cell-autonomous manner and functions upstream of beta- catenin. May act via its interaction with Wnt and LRP proteins. May play a role in colorectal tumorigenesis.

#### Cellular Location

Cell membrane; Single-pass type I membrane protein

#### Tissue Location

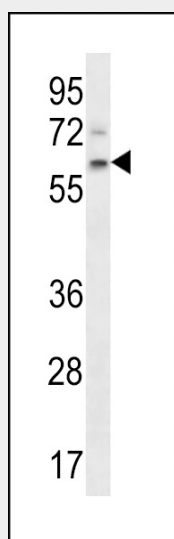
Abundantly expressed in heart, pancreas, prostate and ovary. Moderately expressed in lung, liver, kidney, spleen, thymus, colon and peripheral lymphocytes. Abundantly expressed in both the epidermal and dermal compartments of the hair follicle. Present in scalp skin Highly expressed in the hair follicle dermal papilla, the matrix, and the hair shaft (at protein level)

### APCDD1 Antibody (N-term) - Protocols

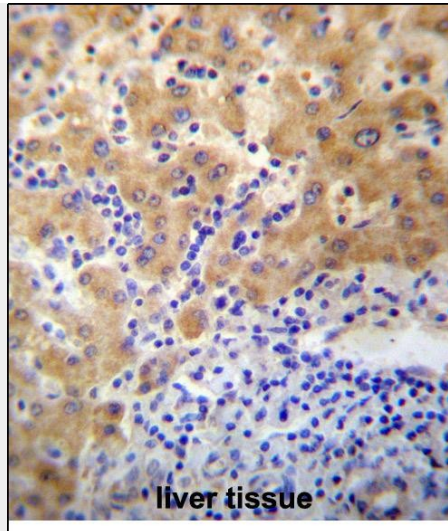
Provided below are standard protocols that you may find useful for product applications.

- [Western Blot](#)
- [Blocking Peptides](#)
- [Dot Blot](#)
- [Immunohistochemistry](#)
- [Immunofluorescence](#)
- [Immunoprecipitation](#)
- [Flow Cytometry](#)
- [Cell Culture](#)

### APCDD1 Antibody (N-term) - Images



APCDD1 Antibody (N-term) (Cat. #AP13356a) western blot analysis in NCI-H292 cell line lysates (35ug/lane). This demonstrates the APCDD1 antibody detected the APCDD1 protein (arrow).



APCDD1 Antibody (N-term) (Cat. #AP13356a) immunohistochemistry analysis in formalin fixed and paraffin embedded human liver tissue followed by peroxidase conjugation of the secondary antibody and DAB staining. This data demonstrates the use of APCDD1 Antibody (N-term) for immunohistochemistry. Clinical relevance has not been evaluated.

#### **APCDD1 Antibody (N-term) - Background**

This locus encodes an inhibitor of the Wnt signaling pathway. Mutations at this locus have been associated with hereditary hypotrichosis simplex. Increased expression of this gene may also be associated with colorectal carcinogenesis.

#### **APCDD1 Antibody (N-term) - References**

Shimomura, Y., et al. Nature 464(7291):1043-1047(2010)  
Takahashi, M., et al. Cancer Res. 62(20):5651-5656(2002)