

**MARCH4 Antibody (C-term)**  
**Affinity Purified Rabbit Polyclonal Antibody (Pab)**  
**Catalog # AP13332b**

**Specification**

---

**MARCH4 Antibody (C-term) - Product Information**

Application	WB,E
Primary Accession	<a href="#">O9P2E8</a>
Other Accession	<a href="#">NP_065865.1</a>
Reactivity	Human
Host	Rabbit
Clonality	Polyclonal
Isotype	Rabbit IgG
Calculated MW	45528
Antigen Region	302-331

**MARCH4 Antibody (C-term) - Additional Information**

**Gene ID** 57574

**Other Names**

E3 ubiquitin-protein ligase MARCH4, 632-, Membrane-associated RING finger protein 4, Membrane-associated RING-CH protein IV, MARCH-IV, RING finger protein 174, MARCH4, KIAA1399, RNF174

**Target/Specificity**

This MARCH4 antibody is generated from rabbits immunized with a KLH conjugated synthetic peptide between 302-331 amino acids from the C-terminal region of human MARCH4.

**Dilution**

WB~~1:1000

**Format**

Purified polyclonal antibody supplied in PBS with 0.09% (W/V) sodium azide. This antibody is purified through a protein A column, followed by peptide affinity purification.

**Storage**

Maintain refrigerated at 2-8°C for up to 2 weeks. For long term storage store at -20°C in small aliquots to prevent freeze-thaw cycles.

**Precautions**

MARCH4 Antibody (C-term) is for research use only and not for use in diagnostic or therapeutic procedures.

**MARCH4 Antibody (C-term) - Protein Information**

**Name** MARCHF4 ([HGNC:29269](#))

**Function** E3 ubiquitin-protein ligase that may mediate ubiquitination of MHC-I and CD4, and promote their subsequent endocytosis and sorting to lysosomes via multivesicular bodies. E3 ubiquitin ligases accept ubiquitin from an E2 ubiquitin-conjugating enzyme in the form of a thioester and then directly transfer the ubiquitin to targeted substrates.

**Cellular Location**

Golgi apparatus membrane; Multi-pass membrane protein

**Tissue Location**

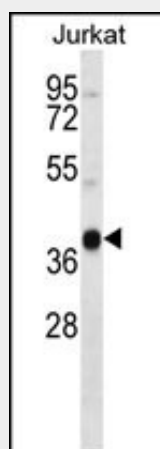
Expressed in brain and placenta.

### MARCH4 Antibody (C-term) - Protocols

Provided below are standard protocols that you may find useful for product applications.

- [Western Blot](#)
- [Blocking Peptides](#)
- [Dot Blot](#)
- [Immunohistochemistry](#)
- [Immunofluorescence](#)
- [Immunoprecipitation](#)
- [Flow Cytometry](#)
- [Cell Culture](#)

### MARCH4 Antibody (C-term) - Images



MARCH4 Antibody (C-term) (Cat. #AP13332b) western blot analysis in Jurkat cell line lysates (35ug/lane). This demonstrates the MARCH4 antibody detected the MARCH4 protein (arrow).

### MARCH4 Antibody (C-term) - Background

MARCH4 is a member of the MARCH family of membrane-bound E3 ubiquitin ligases (EC 6.3.2.19). MARCH enzymes add ubiquitin (see MIM 191339) to target lysines in substrate proteins, thereby signaling their vesicular transport between membrane compartments. MARCH4 reduces surface accumulation of several membrane glycoproteins by directing them to the endosomal compartment (Bartee et al., 2004 [PubMed 14722266]).

### MARCH4 Antibody (C-term) - References

Bartee, E., et al. J. Virol. 78(3):1109-1120(2004)