

CXCR6 Antibody (N-term)
Affinity Purified Rabbit Polyclonal Antibody (Pab)
Catalog # AP13298a

Specification

CXCR6 Antibody (N-term) - Product Information

Application	WB,E
Primary Accession	O00574
Other Accession	NP_006555.1
Reactivity	Human
Host	Rabbit
Clonality	Polyclonal
Isotype	Rabbit IgG
Calculated MW	39280
Antigen Region	3-31

CXCR6 Antibody (N-term) - Additional Information

Gene ID 10663

Other Names

C-X-C chemokine receptor type 6, CXC-R6, CXCR-6, CDw186, G-protein coupled receptor STRL33, G-protein coupled receptor bonzo, CD186, CXCR6, BONZO, STRL33, TYMSTR

Target/Specificity

This CXCR6 antibody is generated from rabbits immunized with a KLH conjugated synthetic peptide between 3-31 amino acids from the N-terminal region of human CXCR6.

Dilution

WB~~1:1000

Format

Purified polyclonal antibody supplied in PBS with 0.09% (W/V) sodium azide. This antibody is purified through a protein A column, followed by peptide affinity purification.

Storage

Maintain refrigerated at 2-8°C for up to 2 weeks. For long term storage store at -20°C in small aliquots to prevent freeze-thaw cycles.

Precautions

CXCR6 Antibody (N-term) is for research use only and not for use in diagnostic or therapeutic procedures.

CXCR6 Antibody (N-term) - Protein Information

Name CXCR6

Synonyms BONZO, STRL33, TYMSTR

Function Receptor for the C-X-C chemokine CXCL16. Used as a coreceptor by SIVs and by strains of HIV-2 and m-tropic HIV-1.

Cellular Location

Cell membrane; Multi-pass membrane protein.

Tissue Location

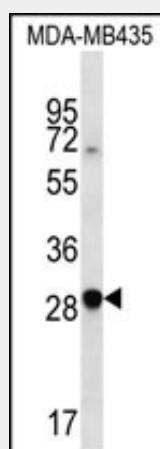
Expressed in lymphoid tissues and activated T cells

CXCR6 Antibody (N-term) - Protocols

Provided below are standard protocols that you may find useful for product applications.

- [Western Blot](#)
- [Blocking Peptides](#)
- [Dot Blot](#)
- [Immunohistochemistry](#)
- [Immunofluorescence](#)
- [Immunoprecipitation](#)
- [Flow Cytometry](#)
- [Cell Culture](#)

CXCR6 Antibody (N-term) - Images



CXCR6 Antibody (N-term) (Cat. #AP13298a) western blot analysis in MDA-MB435 cell line lysates (35ug/lane). This demonstrates the CXCR6 antibody detected the CXCR6 protein (arrow).

CXCR6 Antibody (N-term) - Background

Receptor for the C-X-C chemokine CXCL16. Used as a coreceptor by SIVs and by strains of HIV-2 and m-tropic HIV-1.

CXCR6 Antibody (N-term) - References

Limou, S., et al. J. Infect. Dis. 202(6):908-915(2010)
Zhou, W.H., et al. Zhonghua Yi Xue Za Zhi 90(14):947-951(2010)
Segat, L., et al. Vaccine 28(10):2201-2206(2010)
Johnatty, S.E., et al. PLoS Genet. 6 (7), E1001016 (2010) :
Darash-Yahana, M., et al. PLoS ONE 4 (8), E6695 (2009) :