

ZP1 Antibody (C-term)
Affinity Purified Rabbit Polyclonal Antibody (Pab)
Catalog # AP13199b

Specification

ZP1 Antibody (C-term) - Product Information

Application	WB,E
Primary Accession	P60852
Other Accession	NP_997224.2
Reactivity	Human
Host	Rabbit
Clonality	Polyclonal
Isotype	Rabbit IgG
Calculated MW	70049
Antigen Region	536-565

ZP1 Antibody (C-term) - Additional Information

Gene ID 22917

Other Names

Zona pellucida sperm-binding protein 1, Zona pellucida glycoprotein 1, Zp-1, Processed zona pellucida sperm-binding protein 1, ZP1

Target/Specificity

This ZP1 antibody is generated from rabbits immunized with a KLH conjugated synthetic peptide between 536-565 amino acids from the C-terminal region of human ZP1.

Dilution

WB~~1:1000

Format

Purified polyclonal antibody supplied in PBS with 0.09% (W/V) sodium azide. This antibody is purified through a protein A column, followed by peptide affinity purification.

Storage

Maintain refrigerated at 2-8°C for up to 2 weeks. For long term storage store at -20°C in small aliquots to prevent freeze-thaw cycles.

Precautions

ZP1 Antibody (C-term) is for research use only and not for use in diagnostic or therapeutic procedures.

ZP1 Antibody (C-term) - Protein Information

Name ZP1

Function Component of the zona pellucida, an extracellular matrix surrounding oocytes which

mediates sperm binding, induction of the acrosome reaction and prevents post-fertilization polyspermy. The zona pellucida is composed of 3 to 4 glycoproteins, ZP1, ZP2, ZP3, and ZP4. ZP1 ensures the structural integrity of the zona pellucida.

Cellular Location

[Processed zona pellucida sperm-binding protein 1]: Zona pellucida

Tissue Location

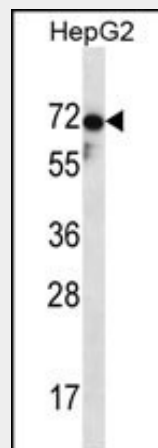
Expressed in oocytes (at protein level).

ZP1 Antibody (C-term) - Protocols

Provided below are standard protocols that you may find useful for product applications.

- [Western Blot](#)
- [Blocking Peptides](#)
- [Dot Blot](#)
- [Immunohistochemistry](#)
- [Immunofluorescence](#)
- [Immunoprecipitation](#)
- [Flow Cytometry](#)
- [Cell Culture](#)

ZP1 Antibody (C-term) - Images



ZP1 Antibody (C-term) (Cat. #AP13199b) western blot analysis in HepG2 cell line lysates (35ug/lane). This demonstrates the ZP1 antibody detected the ZP1 protein (arrow).

ZP1 Antibody (C-term) - Background

The mammalian zona pellucida, which mediates species-specific sperm binding, induction of the acrosome reaction and prevents post-fertilization polyspermy, is composed of three to four glycoproteins, ZP1, ZP2, ZP3, and ZP4. ZP1 ensures the structural integrity of the zona pellucida.

ZP1 Antibody (C-term) - References

- Anton, A.I., et al. Ann. Hematol. 89(11):1147-1154(2010)
Ganguly, A., et al. Hum. Reprod. 25(7):1643-1656(2010)
Han, S., et al. Hum. Immunol. 71(7):727-730(2010)
Rajaraman, P., et al. Cancer Epidemiol. Biomarkers Prev. 19(5):1356-1361(2010)

Rajaraman, P., et al. Cancer Epidemiol. Biomarkers Prev. 18(5):1651-1658(2009)