

HEBP2 Antibody (N-term)
Affinity Purified Rabbit Polyclonal Antibody (Pab)
Catalog # AP13181a**Specification**

HEBP2 Antibody (N-term) - Product Information

Application	WB,E
Primary Accession	O9Y5Z4
Other Accession	O9WU63 , NP_055135.1
Reactivity	Human
Predicted	Mouse
Host	Rabbit
Clonality	Polyclonal
Isotype	Rabbit IgG
Calculated MW	22875
Antigen Region	18-47

HEBP2 Antibody (N-term) - Additional Information**Gene ID** 23593**Other Names**

Heme-binding protein 2, Placental protein 23, PP23, Protein SOUL, HEBP2, C6orf34, SOUL

Target/Specificity

This HEBP2 antibody is generated from rabbits immunized with a KLH conjugated synthetic peptide between 18-47 amino acids from the N-terminal region of human HEBP2.

Dilution

WB~~1:1000

Format

Purified polyclonal antibody supplied in PBS with 0.09% (W/V) sodium azide. This antibody is purified through a protein A column, followed by peptide affinity purification.

Storage

Maintain refrigerated at 2-8°C for up to 2 weeks. For long term storage store at -20°C in small aliquots to prevent freeze-thaw cycles.

Precautions

HEBP2 Antibody (N-term) is for research use only and not for use in diagnostic or therapeutic procedures.

HEBP2 Antibody (N-term) - Protein Information**Name** HEBP2**Synonyms** C6orf34, SOUL

Function Can promote mitochondrial permeability transition and facilitate necrotic cell death under different types of stress conditions.

Cellular Location

Cytoplasm. Mitochondrion. Note=Mainly localized to the cytoplasm with a much lower abundance in the mitochondrion

Tissue Location

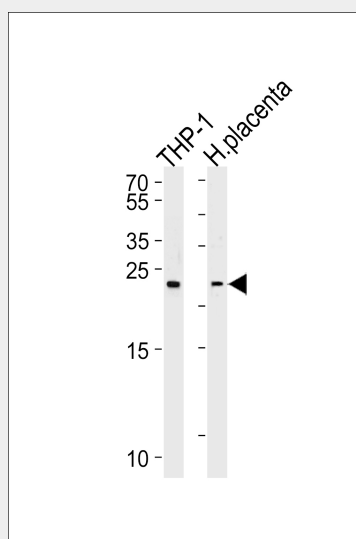
Detected in placenta..

HEBP2 Antibody (N-term) - Protocols

Provided below are standard protocols that you may find useful for product applications.

- [Western Blot](#)
- [Blocking Peptides](#)
- [Dot Blot](#)
- [Immunohistochemistry](#)
- [Immunofluorescence](#)
- [Immunoprecipitation](#)
- [Flow Cytometry](#)
- [Cell Culture](#)

HEBP2 Antibody (N-term) - Images



Western blot analysis of lysates from THP-1 cell line and human placenta tissue lysates (from left to right), using HEBP2 Antibody (N-term)(Cat. #AP13181a). AP13181a was diluted at 1:1000 at each lane. A goat anti-rabbit IgG H&L(HRP) at 1:5000 dilution was used as the secondary antibody. Lysates at 35ug per lane.

HEBP2 Antibody (N-term) - Background

HEBP2 can promote mitochondrial permeability transition and facilitate necrotic cell death under different types of stress conditions.

HEBP2 Antibody (N-term) - References

Szigeti, A., et al. J. Biol. Chem. 285(3):2140-2151(2010)
Freire, F., et al. Acta Crystallogr. Sect. F Struct. Biol. Cryst. Commun. 65 (PT 7), 723-726 (2009) :
Szigeti, A., et al. FEBS Lett. 580(27):6447-6454(2006)
Mungall, A.J., et al. Nature 425(6960):805-811(2003)
Liu, L., et al. Genomics 79(1):124-136(2002)