

**MAGEE2 Antibody (C-term)**  
**Affinity Purified Rabbit Polyclonal Antibody (Pab)**  
**Catalog # AP13175b**

**Specification**

---

**MAGEE2 Antibody (C-term) - Product Information**

Application	WB,E
Primary Accession	<a href="#">Q8TD90</a>
Other Accession	<a href="#">NP_619648.1</a>
Reactivity	Human
Host	Rabbit
Clonality	Polyclonal
Isotype	Rabbit IgG
Calculated MW	60378
Antigen Region	485-513

**MAGEE2 Antibody (C-term) - Additional Information**

**Gene ID** 139599

**Other Names**

Melanoma-associated antigen E2, Hepatocellular carcinoma-associated protein 3, MAGE-E2 antigen, MAGEE2, HCA3

**Target/Specificity**

This MAGEE2 antibody is generated from rabbits immunized with a KLH conjugated synthetic peptide between 485-513 amino acids from the C-terminal region of human MAGEE2.

**Dilution**

WB~~1:1000

**Format**

Purified polyclonal antibody supplied in PBS with 0.09% (W/V) sodium azide. This antibody is purified through a protein A column, followed by peptide affinity purification.

**Storage**

Maintain refrigerated at 2-8°C for up to 2 weeks. For long term storage store at -20°C in small aliquots to prevent freeze-thaw cycles.

**Precautions**

MAGEE2 Antibody (C-term) is for research use only and not for use in diagnostic or therapeutic procedures.

**MAGEE2 Antibody (C-term) - Protein Information**

**Name** MAGEE2

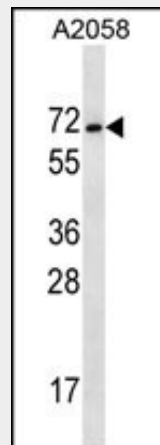
**Synonyms** HCA3

## MAGEE2 Antibody (C-term) - Protocols

Provided below are standard protocols that you may find useful for product applications.

- [Western Blot](#)
- [Blocking Peptides](#)
- [Dot Blot](#)
- [Immunohistochemistry](#)
- [Immunofluorescence](#)
- [Immunoprecipitation](#)
- [Flow Cytometry](#)
- [Cell Culture](#)

## MAGEE2 Antibody (C-term) - Images



MAGEE2 Antibody (C-term) (Cat. #AP13175b) western blot analysis in A2058 cell line lysates (35ug/lane). This demonstrates the MAGEE2 antibody detected the MAGEE2 protein (arrow).

## MAGEE2 Antibody (C-term) - Background

The specific function of this protein remains unknown.

## MAGEE2 Antibody (C-term) - References

Ross, M.T., et al. Nature 434(7031):325-337(2005)  
Chomez, P., et al. Cancer Res. 61(14):5544-5551(2001)