

AMELX Antibody (N-term)
Affinity Purified Rabbit Polyclonal Antibody (Pab)
Catalog # AP13169A

Specification

AMELX Antibody (N-term) - Product Information

Application	WB, IHC-P, FC,E
Primary Accession	O99217
Other Accession	NP_872621.1 , NP_001133.1
Reactivity	Human
Host	Rabbit
Clonality	Polyclonal
Isotype	Rabbit IgG
Antigen Region	17-46

AMELX Antibody (N-term) - Additional Information

Gene ID 265

Other Names

Amelogenin, X isoform, AMELX, AMG, AMGX

Target/Specificity

This AMELX antibody is generated from rabbits immunized with a KLH conjugated synthetic peptide between 17-46 amino acids from the N-terminal region of human AMELX.

Dilution

WB~~1:1000
IHC-P~~1:10~50
FC~~1:10~50

Format

Purified polyclonal antibody supplied in PBS with 0.09% (W/V) sodium azide. This antibody is purified through a protein A column, followed by peptide affinity purification.

Storage

Maintain refrigerated at 2-8°C for up to 2 weeks. For long term storage store at -20°C in small aliquots to prevent freeze-thaw cycles.

Precautions

AMELX Antibody (N-term) is for research use only and not for use in diagnostic or therapeutic procedures.

AMELX Antibody (N-term) - Protein Information

Name AMELX

Synonyms AMG, AMGX

Function Plays a role in biomineralization. Seems to regulate the formation of crystallites during the secretory stage of tooth enamel development. Thought to play a major role in the structural organization and mineralization of developing enamel.

Cellular Location

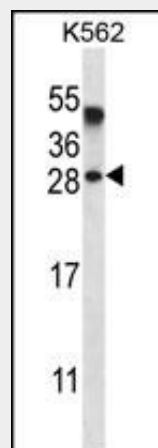
Secreted, extracellular space, extracellular matrix

AMELX Antibody (N-term) - Protocols

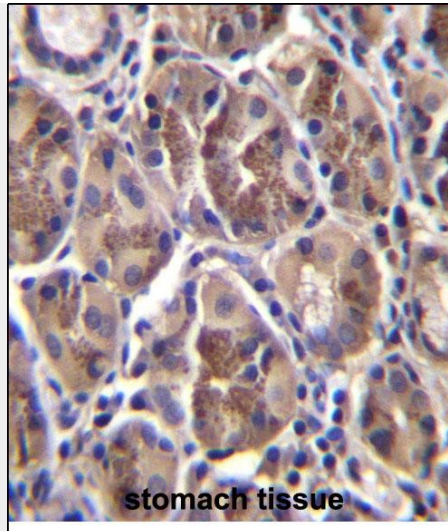
Provided below are standard protocols that you may find useful for product applications.

- [Western Blot](#)
- [Blocking Peptides](#)
- [Dot Blot](#)
- [Immunohistochemistry](#)
- [Immunofluorescence](#)
- [Immunoprecipitation](#)
- [Flow Cytometry](#)
- [Cell Culture](#)

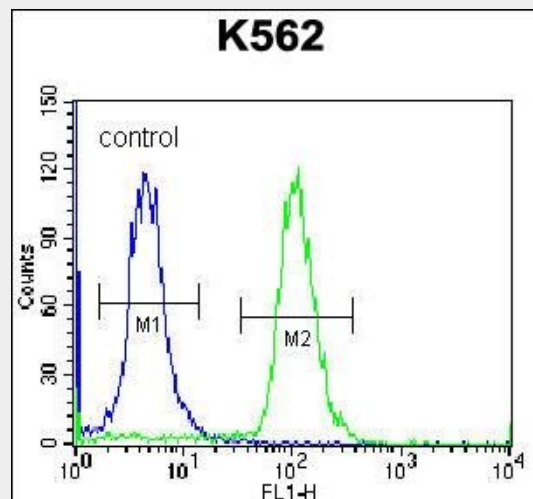
AMELX Antibody (N-term) - Images



AMELX Antibody (N-term) (Cat. #AP13169a) western blot analysis in K562 cell line lysates (35ug/lane). This demonstrates the AMELX antibody detected the AMELX protein (arrow).



AMELX Antibody (N-term) (Cat. #AP13169a) immunohistochemistry analysis in formalin fixed and paraffin embedded human stomach tissue followed by peroxidase conjugation of the secondary antibody and DAB staining. This data demonstrates the use of AMELX Antibody (N-term) for immunohistochemistry. Clinical relevance has not been evaluated.



AMELX Antibody (N-term) (Cat. #AP13169a) flow cytometric analysis of K562 cells (right histogram) compared to a negative control cell (left histogram). FITC-conjugated donkey-anti-rabbit secondary antibodies were used for the analysis.

AMELX Antibody (N-term) - Background

This gene encodes a member of the amelogenin family of extracellular matrix proteins. Amelogenins are involved in biomineralization during tooth enamel development. Mutations in this gene cause X-linked amelogenesis imperfecta. Alternative splicing results in multiple transcript variants encoding different isoforms.

AMELX Antibody (N-term) - References

Bailey, S.D., et al. Diabetes Care 33(10):2250-2253(2010)
 Almqvist, S., et al. J Mater Sci Mater Med 21(3):947-954(2010)
 Lee, S.K., et al. J. Dent. Res. 89(1):46-50(2010)
 Talmud, P.J., et al. Am. J. Hum. Genet. 85(5):628-642(2009)

Tomas, C., et al. Forensic Sci Int Genet 3(1):1-6(2008)