

LRP10 Antibody (N-term)
Affinity Purified Rabbit Polyclonal Antibody (Pab)
Catalog # AP13153a

Specification

LRP10 Antibody (N-term) - Product Information

Application	WB,E
Primary Accession	O7Z4F1
Other Accession	NP_054764.2
Reactivity	Human
Host	Rabbit
Clonality	Polyclonal
Isotype	Rabbit IgG
Calculated MW	76193
Antigen Region	48-77

LRP10 Antibody (N-term) - Additional Information

Gene ID 26020

Other Names

Low-density lipoprotein receptor-related protein 10, LRP-10, LRP10

Target/Specificity

This LRP10 antibody is generated from rabbits immunized with a KLH conjugated synthetic peptide between 48-77 amino acids from the N-terminal region of human LRP10.

Dilution

WB~~1:1000

Format

Purified polyclonal antibody supplied in PBS with 0.09% (W/V) sodium azide. This antibody is purified through a protein A column, followed by peptide affinity purification.

Storage

Maintain refrigerated at 2-8°C for up to 2 weeks. For long term storage store at -20°C in small aliquots to prevent freeze-thaw cycles.

Precautions

LRP10 Antibody (N-term) is for research use only and not for use in diagnostic or therapeutic procedures.

LRP10 Antibody (N-term) - Protein Information

Name LRP10

Function Probable receptor, which is involved in the internalization of lipophilic molecules and/or signal transduction. May be involved in the uptake of lipoprotein APOE in liver (By similarity).

Cellular Location

Membrane; Single-pass type I membrane protein. Membrane, coated pit

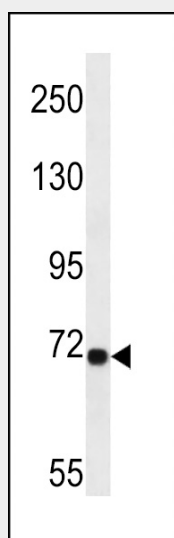
Tissue Location

Expressed in blood leukocyte, lung, placenta, small intestine, liver, kidney, spleen, thymus, colon, skeletal muscle and heart.

LRP10 Antibody (N-term) - Protocols

Provided below are standard protocols that you may find useful for product applications.

- [Western Blot](#)
- [Blocking Peptides](#)
- [Dot Blot](#)
- [Immunohistochemistry](#)
- [Immunofluorescence](#)
- [Immunoprecipitation](#)
- [Flow Cytometry](#)
- [Cell Culture](#)

LRP10 Antibody (N-term) - Images

LRP10 Antibody (N-term) (Cat. #AP13153a) western blot analysis in A549 cell line lysates (35ug/lane). This demonstrates the LRP10 antibody detected the LRP10 protein (arrow).

LRP10 Antibody (N-term) - Background

Probable receptor, which is involved in the internalization of lipophilic molecules and/or signal transduction. May be involved in the uptake of lipoprotein APOE in liver (By similarity).

LRP10 Antibody (N-term) - References

- Jeong, Y.H., et al. *Biochem. Biophys. Res. Commun.* 392(4):495-499(2010)
Wan, D., et al. *Proc. Natl. Acad. Sci. U.S.A.* 101(44):15724-15729(2004)
Clark, H.F., et al. *Genome Res.* 13(10):2265-2270(2003)
Tomarev, S.I., et al. *Invest. Ophthalmol. Vis. Sci.* 44(6):2588-2596(2003)
Sugiyama, T., et al. *Biochemistry* 39(51):15817-15825(2000)