

RARRES1 Antibody (C-term)
Affinity Purified Rabbit Polyclonal Antibody (Pab)
Catalog # AP13138b

Specification

RARRES1 Antibody (C-term) - Product Information

Application	WB, IHC-P,E
Primary Accession	P49788
Other Accession	NP_002879.2 , NP_996846.1
Reactivity	Human
Host	Rabbit
Clonality	Polyclonal
Isotype	Rabbit IgG
Calculated MW	33285
Antigen Region	134-163

RARRES1 Antibody (C-term) - Additional Information

Gene ID 5918

Other Names

Retinoic acid receptor responder protein 1, Phorbol ester-induced gene 1 protein, PERG-1, RAR-responsive protein TIG1, Tazarotene-induced gene 1 protein, RARRES1, PEIG1, TIG1

Target/Specificity

This RARRES1 antibody is generated from rabbits immunized with a KLH conjugated synthetic peptide between 134-163 amino acids from the C-terminal region of human RARRES1.

Dilution

WB~~1:1000
IHC-P~~1:10~50

Format

Purified polyclonal antibody supplied in PBS with 0.09% (W/V) sodium azide. This antibody is purified through a protein A column, followed by peptide affinity purification.

Storage

Maintain refrigerated at 2-8°C for up to 2 weeks. For long term storage store at -20°C in small aliquots to prevent freeze-thaw cycles.

Precautions

RARRES1 Antibody (C-term) is for research use only and not for use in diagnostic or therapeutic procedures.

RARRES1 Antibody (C-term) - Protein Information

Name RARRES1

Synonyms PEIG1, TIG1

Function Inhibitor of the cytoplasmic carboxypeptidase AGL2, may regulate the alpha-tubulin tyrosination cycle.

Cellular Location

Membrane; Single-pass type III membrane protein. Secreted

Tissue Location

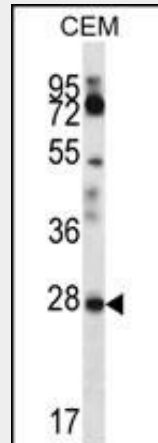
Detected in urine (at protein level).

RARRES1 Antibody (C-term) - Protocols

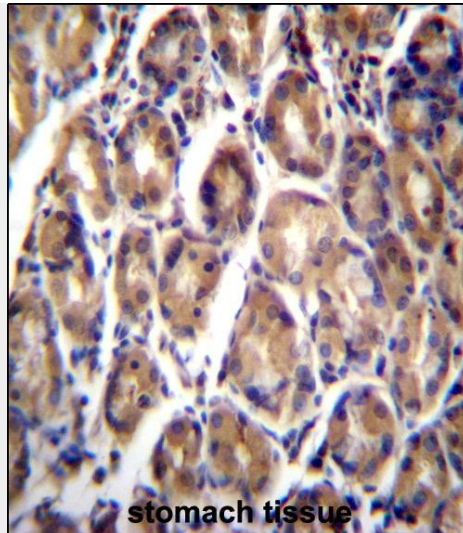
Provided below are standard protocols that you may find useful for product applications.

- [Western Blot](#)
- [Blocking Peptides](#)
- [Dot Blot](#)
- [Immunohistochemistry](#)
- [Immunofluorescence](#)
- [Immunoprecipitation](#)
- [Flow Cytometry](#)
- [Cell Culture](#)

RARRES1 Antibody (C-term) - Images



RARRES1 Antibody (C-term) (Cat. #AP13138b) western blot analysis in CEM cell line lysates (35ug/lane). This demonstrates the RARRES1 antibody detected the RARRES1 protein (arrow).



RARRES1 Antibody (C-term) (Cat. #AP13138b) immunohistochemistry analysis in formalin fixed and paraffin embedded human stomach tissue followed by peroxidase conjugation of the secondary antibody and DAB staining. This data demonstrates the use of RARRES1 Antibody (C-term) for immunohistochemistry. Clinical relevance has not been evaluated.

RARRES1 Antibody (C-term) - Background

This gene was identified as a retinoid acid (RA) receptor-responsive gene. It encodes a type 1 membrane protein. The expression of this gene is upregulated by tazarotene as well as by retinoic acid receptors. The expression of this gene is found to be downregulated in prostate cancer, which is caused by the methylation of its promoter and CpG island. Alternatively spliced transcript variant encoding distinct isoforms have been observed.

RARRES1 Antibody (C-term) - References

Wheeler, H.E., et al. PLoS Genet. 5 (10), E1000685 (2009) :
Kwok, W.K., et al. Cancer Genet. Cytogenet. 194(1):58-64(2009)
Ohnishi, S., et al. Cell Prolif. 42(3):309-316(2009)
Son, M.S., et al. Oncol. Res. 17 (11-12), 571-580 (2009) :
Shutoh, M., et al. Cancer 104(8):1609-1619(2005)