

REPS2 Antibody (N-term)
Affinity Purified Rabbit Polyclonal Antibody (Pab)
Catalog # AP13131a**Specification**

REPS2 Antibody (N-term) - Product Information

Application	WB, IHC-P,E
Primary Accession	Q8NFH8
Other Accession	NP_004717.2 , NP_001074444.1
Reactivity	Human, Mouse
Host	Rabbit
Clonality	Polyclonal
Isotype	Rabbit IgG
Calculated MW	71534
Antigen Region	153-182

REPS2 Antibody (N-term) - Additional Information**Gene ID** 9185**Other Names**

RalBP1-associated Eps domain-containing protein 2, Partner of RalBP1, RalBP1-interacting protein 2, REPS2, POB1

Target/Specificity

This REPS2 antibody is generated from rabbits immunized with a KLH conjugated synthetic peptide between 153-182 amino acids from the N-terminal region of human REPS2.

DilutionWB~~1:1000
IHC-P~~1:10~50**Format**

Purified polyclonal antibody supplied in PBS with 0.09% (W/V) sodium azide. This antibody is purified through a protein A column, followed by peptide affinity purification.

Storage

Maintain refrigerated at 2-8°C for up to 2 weeks. For long term storage store at -20°C in small aliquots to prevent freeze-thaw cycles.

Precautions

REPS2 Antibody (N-term) is for research use only and not for use in diagnostic or therapeutic procedures.

REPS2 Antibody (N-term) - Protein Information**Name** REPS2

Synonyms POB1

Function Involved in ligand-dependent receptor mediated endocytosis of the EGF and insulin receptors as part of the Ral signaling pathway (PubMed:[10393179](#), PubMed:[12771942](#), PubMed:[9422736](#)). By controlling growth factor receptors endocytosis may regulate cell survival (PubMed:[12771942](#)). Through ASAP1 may regulate cell adhesion and migration (PubMed:[12149250](#)).

Cellular Location

Cytoplasm.

Tissue Location

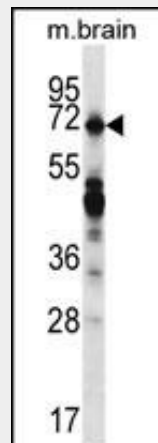
Expressed at high levels in the cerebrum, cerebellum, lung, kidney, and testis. Weakly expressed in the kidney Isoform 2 is down-regulated during progression of prostate cancer

REPS2 Antibody (N-term) - Protocols

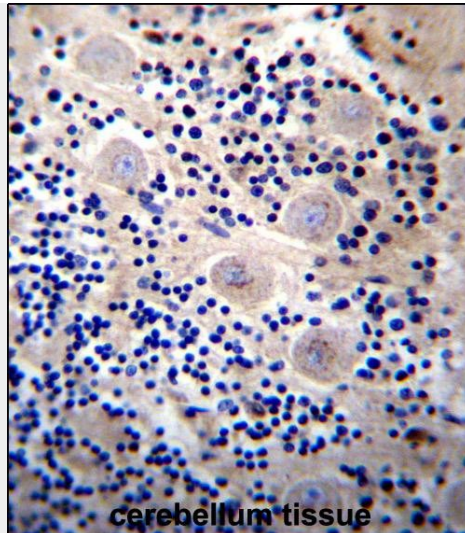
Provided below are standard protocols that you may find useful for product applications.

- [Western Blot](#)
- [Blocking Peptides](#)
- [Dot Blot](#)
- [Immunohistochemistry](#)
- [Immunofluorescence](#)
- [Immunoprecipitation](#)
- [Flow Cytometry](#)
- [Cell Culture](#)

REPS2 Antibody (N-term) - Images



REPS2 Antibody (N-term) (Cat. #AP13131a) western blot analysis in mouse brain tissue lysates (35ug/lane). This demonstrates the REPS2 antibody detected the REPS2 protein (arrow).



cerebellum tissue

REPS2 Antibody (N-term) (Cat. #AP13131a) immunohistochemistry analysis in formalin fixed and paraffin embedded human cerebellum tissue followed by peroxidase conjugation of the secondary antibody and DAB staining. This data demonstrates the use of REPS2 Antibody (N-term) for immunohistochemistry. Clinical relevance has not been evaluated.

REPS2 Antibody (N-term) - Background

The product of this gene is part of a protein complex that regulates the endocytosis of growth factor receptors. The encoded protein directly interacts with a GTPase activating protein that functions downstream of the small G protein Ral. Its expression can negatively affect receptor internalization and inhibit growth factor signaling. Multiple transcript variants encoding different isoforms have been found for this gene.

REPS2 Antibody (N-term) - References

Doolan, P., et al. *Tumour Biol.* 30(4):200-209(2009) Singhal, S.S., et al. *J. Biol. Chem.* 283(28):19714-19729(2008) Yadav, S., et al. *Biochem. Biophys. Res. Commun.* 328(4):1003-1009(2005) Oosterhoff, J.K., et al. *Int. J. Cancer* 113(4):561-567(2005) Penninkhof, F., et al. *Oncogene* 23(33):5607-5615(2004)