

**SPT19 Antibody (C-term)**  
**Affinity Purified Rabbit Polyclonal Antibody (Pab)**  
**Catalog # AP13095b**

**Specification**

---

**SPT19 Antibody (C-term) - Product Information**

Application	<b>WB, IHC-P,E</b>
Primary Accession	<a href="#">O7Z5L4</a>
Other Accession	<a href="#">NP_777587.1</a>
Reactivity	<b>Mouse</b>
Host	<b>Rabbit</b>
Clonality	<b>Polyclonal</b>
Isotype	<b>Rabbit IgG</b>
Calculated MW	<b>19186</b>
Antigen Region	<b>122-150</b>

**SPT19 Antibody (C-term) - Additional Information**

**Gene ID** 219938

**Other Names**

Spermatogenesis-associated protein 19, mitochondrial, Spermatogenic cell-specific gene 1 protein, Spergen-1, SPATA19, SPERGEN1

**Target/Specificity**

This SPT19 antibody is generated from rabbits immunized with a KLH conjugated synthetic peptide between 122-150 amino acids from the C-terminal region of human SPT19.

**Dilution**

WB~~1:1000  
IHC-P~~1:10~50

**Format**

Purified polyclonal antibody supplied in PBS with 0.09% (W/V) sodium azide. This antibody is purified through a protein A column, followed by peptide affinity purification.

**Storage**

Maintain refrigerated at 2-8°C for up to 2 weeks. For long term storage store at -20°C in small aliquots to prevent freeze-thaw cycles.

**Precautions**

SPT19 Antibody (C-term) is for research use only and not for use in diagnostic or therapeutic procedures.

**SPT19 Antibody (C-term) - Protein Information**

**Name** SPATA19

## Synonyms SPERGEN1

**Function** Essential for sperm motility and male fertility (By similarity). Plays an important role in sperm motility by regulating the organization and function of the mitochondria and is also required for correct sperm midpiece assembly (By similarity).

## Cellular Location

Mitochondrion outer membrane {ECO:0000250|UniProtKB:Q9DAQ9}. Mitochondrion {ECO:0000250|UniProtKB:Q9DAQ9}. Cell projection, cilium, flagellum {ECO:0000250|UniProtKB:Q9DAQ9}. Note=Localizes to the midpiece of the sperm flagellum. {ECO:0000250|UniProtKB:Q9DAQ9}

## Tissue Location

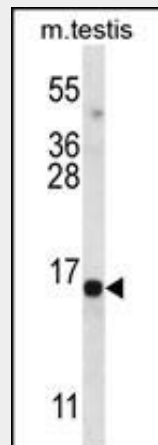
Expressed specifically in testis.

## SPT19 Antibody (C-term) - Protocols

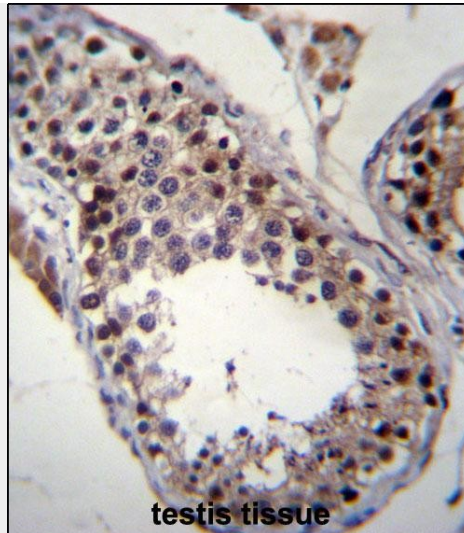
Provided below are standard protocols that you may find useful for product applications.

- [Western Blot](#)
- [Blocking Peptides](#)
- [Dot Blot](#)
- [Immunohistochemistry](#)
- [Immunofluorescence](#)
- [Immunoprecipitation](#)
- [Flow Cytometry](#)
- [Cell Culture](#)

## SPT19 Antibody (C-term) - Images



SPT19 Antibody (C-term) (Cat. #AP13095b) western blot analysis in mouse testis tissue lysates (35ug/lane). This demonstrates the SPT19 antibody detected the SPT19 protein (arrow).



SPT19 Antibody (C-term) (Cat. #AP13095b) immunohistochemistry analysis in formalin fixed and paraffin embedded human testis tissue followed by peroxidase conjugation of the secondary antibody and DAB staining. This data demonstrates the use of SPT19 Antibody (C-term) for immunohistochemistry. Clinical relevance has not been evaluated.

#### **SPT19 Antibody (C-term) - Background**

SPT19 may have a role in spermiogenesis.

#### **SPT19 Antibody (C-term) - References**

- Ghafari-Fard, S., et al. Br. J. Dermatol. 162(4):772-779(2010)
- Stolk, L., et al. Nat. Genet. 41(6):645-647(2009)
- Lamesch, P., et al. Genomics 89(3):307-315(2007)
- Olsen, J.V., et al. Cell 127(3):635-648(2006)
- Olsen, J.V., et al. Cell 127(3):635-648(2006)