

**MBNL3 Antibody (Center)**  
**Affinity Purified Rabbit Polyclonal Antibody (Pab)**  
**Catalog # AP13080c**

**Specification**

---

**MBNL3 Antibody (Center) - Product Information**

Application	WB,E
Primary Accession	<a href="#">O9NUK0</a>
Other Accession	<a href="#">NP_001164174.1</a> , <a href="#">NP_001164173.1</a> , <a href="#">NP_597846.1</a> , <a href="#">NP_001164175.1</a> , <a href="#">NP_001164172.1</a> , <a href="#">NP_060858.2</a>
Reactivity	Human
Host	Rabbit
Clonality	Polyclonal
Isotype	Rabbit IgG
Calculated MW	38532
Antigen Region	251-280

**MBNL3 Antibody (Center) - Additional Information**

**Gene ID** 55796

**Other Names**

Muscleblind-like protein 3, Cys3His CCG1-required protein, Muscleblind-like X-linked protein, Protein HCHCR, MBNL3, CHCR, MBLX39, MBXL

**Target/Specificity**

This MBNL3 antibody is generated from rabbits immunized with a KLH conjugated synthetic peptide between 251-280 amino acids from the Central region of human MBNL3.

**Dilution**

WB~~1:1000

**Format**

Purified polyclonal antibody supplied in PBS with 0.09% (W/V) sodium azide. This antibody is purified through a protein A column, followed by peptide affinity purification.

**Storage**

Maintain refrigerated at 2-8°C for up to 2 weeks. For long term storage store at -20°C in small aliquots to prevent freeze-thaw cycles.

**Precautions**

MBNL3 Antibody (Center) is for research use only and not for use in diagnostic or therapeutic procedures.

**MBNL3 Antibody (Center) - Protein Information**

**Name** MBNL3

**Synonyms** CHCR, MBLX39, MBXL

**Function** Mediates pre-mRNA alternative splicing regulation. Acts either as activator or repressor of splicing on specific pre-mRNA targets. Inhibits cardiac troponin-T (TNNT2) pre-mRNA exon inclusion but induces insulin receptor (IR) pre-mRNA exon inclusion in muscle. Antagonizes the alternative splicing activity pattern of CELF proteins. May play a role in myotonic dystrophy pathophysiology (DM). Could inhibit terminal muscle differentiation, acting at approximately the time of myogenin induction.

**Cellular Location**

Nucleus. Cytoplasm. Note=Greater concentration in the nucleus. In both DM1 and DM2 patients, colocalizes with nuclear foci of retained expanded-repeat transcripts

**Tissue Location**

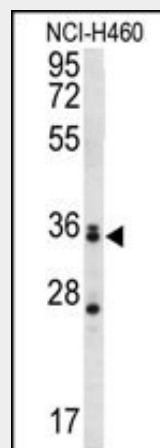
Highly expressed in the placenta.

**MBNL3 Antibody (Center) - Protocols**

Provided below are standard protocols that you may find useful for product applications.

- [Western Blot](#)
- [Blocking Peptides](#)
- [Dot Blot](#)
- [Immunohistochemistry](#)
- [Immunofluorescence](#)
- [Immunoprecipitation](#)
- [Flow Cytometry](#)
- [Cell Culture](#)

**MBNL3 Antibody (Center) - Images**



MBNL3 Antibody (Center) (Cat. #AP13080c) western blot analysis in NCI-H460 cell line lysates (35ug/lane). This demonstrates the MBNL3 antibody detected the MBNL3 protein (arrow).

**MBNL3 Antibody (Center) - Background**

This gene encodes a member of the muscleblind-like family of proteins. The encoded protein may function in regulation of alternative splicing and may play a role in the pathophysiology of myotonic dystrophy. Alternatively spliced transcript variants have

been described.

### **MBNL3 Antibody (Center) - References**

Holt, I., et al. Am. J. Pathol. 174(1):216-227(2009)

Self, J.E., et al. Mol. Vis. 12, 1211-1216 (2006) :

Ho, T.H., et al. EMBO J. 23(15):3103-3112(2004)

Squillace, R.M., et al. Dev. Biol. 250(1):218-230(2002)

Fardaei, M., et al. Hum. Mol. Genet. 11(7):805-814(2002)