

ERLIN1 Antibody (Center)
Affinity Purified Rabbit Polyclonal Antibody (Pab)
Catalog # AP13078c

Specification

ERLIN1 Antibody (Center) - Product Information

| | |
|-------------------|---|
| Application | WB, IHC-P,E |
| Primary Accession | O75477 |
| Other Accession | O91X78 , NP_001094096.1 |
| Reactivity | Human |
| Predicted | Mouse |
| Host | Rabbit |
| Clonality | Polyclonal |
| Isotype | Rabbit IgG |
| Calculated MW | 39171 |
| Antigen Region | 244-273 |

ERLIN1 Antibody (Center) - Additional Information

Gene ID 10613

Other Names

Erlin-1, Endoplasmic reticulum lipid raft-associated protein 1, Protein KE04, Stomatin-prohibitin-flotillin-HflC/K domain-containing protein 1, SPFH domain-containing protein 1, ERLIN1, C10orf69, KE04, KEO4, SPFH1

Target/Specificity

This ERLIN1 antibody is generated from rabbits immunized with a KLH conjugated synthetic peptide between 244-273 amino acids from the Central region of human ERLIN1.

Dilution

WB~~1:1000
IHC-P~~1:10~50

Format

Purified polyclonal antibody supplied in PBS with 0.09% (W/V) sodium azide. This antibody is purified through a protein A column, followed by peptide affinity purification.

Storage

Maintain refrigerated at 2-8°C for up to 2 weeks. For long term storage store at -20°C in small aliquots to prevent freeze-thaw cycles.

Precautions

ERLIN1 Antibody (Center) is for research use only and not for use in diagnostic or therapeutic procedures.

ERLIN1 Antibody (Center) - Protein Information

Name ERLIN1 ([HGNC:16947](#))

Function Component of the ERLIN1/ERLIN2 complex which mediates the endoplasmic reticulum-associated degradation (ERAD) of inositol 1,4,5- trisphosphate receptors (IP3Rs). Involved in regulation of cellular cholesterol homeostasis by regulation the SREBP signaling pathway (PubMed:[37683630](#)). Binds cholesterol and may promote ER retention of the SCAP-SREBF complex (PubMed:[24217618](#)).

Cellular Location

Endoplasmic reticulum membrane; Single-pass type II membrane protein. Note=Associated with lipid raft-like domains of the endoplasmic reticulum membrane

Tissue Location

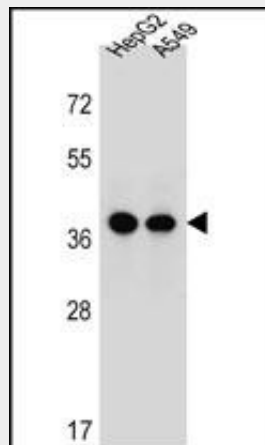
Expressed in heart, placenta, liver, kidney, pancreas, prostate, testis, ovary and small intestine

ERLIN1 Antibody (Center) - Protocols

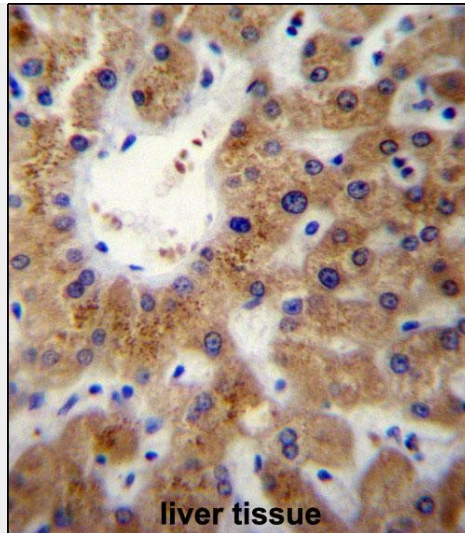
Provided below are standard protocols that you may find useful for product applications.

- [Western Blot](#)
- [Blocking Peptides](#)
- [Dot Blot](#)
- [Immunohistochemistry](#)
- [Immunofluorescence](#)
- [Immunoprecipitation](#)
- [Flow Cytometry](#)
- [Cell Culture](#)

ERLIN1 Antibody (Center) - Images



ERLIN1 Antibody (Center) (Cat. #AP13078c) western blot analysis in HepG2,A549 cell line lysates (35ug/lane).This demonstrates the ERLIN1 antibody detected the ERLIN1 protein (arrow).



ERLIN1 Antibody (Center) (Cat. #AP13078c) immunohistochemistry analysis in formalin fixed and paraffin embedded human liver tissue followed by peroxidase conjugation of the secondary antibody and DAB staining. This data demonstrates the use of ERLIN1 Antibody (Center) for immunohistochemistry. Clinical relevance has not been evaluated.

ERLIN1 Antibody (Center) - Background

Component of the ERLIN1/ERLIN2 complex which mediates the endoplasmic reticulum-associated degradation (ERAD) of inositol 1,4,5-trisphosphate receptors (IP3Rs).

ERLIN1 Antibody (Center) - References

Rose, J.E., et al. Mol. Med. 16 (7-8), 247-253 (2010) :
Martins-de-Souza, D., et al. J Psychiatr Res (2010) In press :
Wang, Y., et al. Biochim. Biophys. Acta 1793(11):1710-1718(2009)
Pearce, M.M., et al. J. Biol. Chem. 284(16):10433-10445(2009)
Yuan, X., et al. Am. J. Hum. Genet. 83(4):520-528(2008)