

**NIT1 Antibody (C-term)**  
**Affinity Purified Rabbit Polyclonal Antibody (Pab)**  
**Catalog # AP13042b**

**Specification**

---

**NIT1 Antibody (C-term) - Product Information**

Application	WB,E
Primary Accession	<a href="#">Q86X76</a>
Other Accession	<a href="#">Q32LH4</a> , <a href="#">NP_001172023.1</a> , <a href="#">NP_005591.1</a> , <a href="#">NP_001172022.1</a> , <a href="#">NP_001172021.1</a>
Reactivity	Human
Predicted	Bovine
Host	Rabbit
Clonality	Polyclonal
Isotype	Rabbit IgG
Calculated MW	35896
Antigen Region	298-327

**NIT1 Antibody (C-term) - Additional Information**

**Gene ID** 4817

**Other Names**

Nitrilase homolog 1, 35--, NIT1

**Target/Specificity**

This NIT1 antibody is generated from rabbits immunized with a KLH conjugated synthetic peptide between 298-327 amino acids from the C-terminal region of human NIT1.

**Dilution**

WB~~1:1000

**Format**

Purified polyclonal antibody supplied in PBS with 0.09% (W/V) sodium azide. This antibody is purified through a protein A column, followed by peptide affinity purification.

**Storage**

Maintain refrigerated at 2-8°C for up to 2 weeks. For long term storage store at -20°C in small aliquots to prevent freeze-thaw cycles.

**Precautions**

NIT1 Antibody (C-term) is for research use only and not for use in diagnostic or therapeutic procedures.

**NIT1 Antibody (C-term) - Protein Information**

**Name** NIT1

**Function** Catalyzes the hydrolysis of the amide bond in N-(4-oxoglutarate)-L-cysteinylglycine (deaminated glutathione), a metabolite repair reaction to dispose of the harmful deaminated glutathione. Plays a role in cell growth and apoptosis: loss of expression promotes cell growth, resistance to DNA damage stress and increased incidence to NMBA-induced tumors. Has tumor suppressor properties that enhances the apoptotic responsiveness in cancer cells; this effect is additive to the tumor suppressor activity of FHIT. It is also a negative regulator of primary T-cells.

#### Cellular Location

[Isoform 2]: Mitochondrion {ECO:0000250|UniProtKB:Q8VDK1}

#### Tissue Location

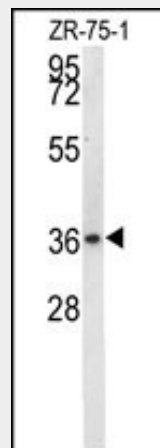
Detected in heart, brain, placenta, liver, skeletal muscle, kidney and pancreas.

### NIT1 Antibody (C-term) - Protocols

Provided below are standard protocols that you may find useful for product applications.

- [Western Blot](#)
- [Blocking Peptides](#)
- [Dot Blot](#)
- [Immunohistochemistry](#)
- [Immunofluorescence](#)
- [Immunoprecipitation](#)
- [Flow Cytometry](#)
- [Cell Culture](#)

### NIT1 Antibody (C-term) - Images



NIT1 Antibody (C-term) (Cat. #AP13042b) western blot analysis in ZR-75-1 cell line lysates (35ug/lane). This demonstrates the NIT1 antibody detected the NIT1 protein (arrow).

### NIT1 Antibody (C-term) - Background

This gene encodes a member of the nitrilase protein family with homology to bacterial and plant nitrilases, enzymes that cleave nitriles and organic amides to the corresponding carboxylic acids plus ammonia. Multiple transcript variants encoding different isoforms have been found for this gene.

### NIT1 Antibody (C-term) - References

Semba, S., et al. J. Biol. Chem. 281(38):28244-28253(2006)

Wang, A.G., et al. Biochem. Biophys. Res. Commun. 345(3):1022-1032(2006)

Pekarsky, Y., et al. Proc. Natl. Acad. Sci. U.S.A. 95(15):8744-8749(1998)