

ARPP-21 Antibody (N-term)
Affinity Purified Rabbit Polyclonal Antibody (Pab)
Catalog # AP13040A**Specification**

ARPP-21 Antibody (N-term) - Product Information

Application	WB,E
Primary Accession	O9UBL0
Other Accession	O9DCB4 , NP_001020239.1 , NP_001020240.1 , NP_938409.1 , NP_057384.2
Reactivity	Human
Predicted	Mouse
Host	Rabbit
Clonality	Polyclonal
Isotype	Rabbit IgG
Calculated MW	89196
Antigen Region	85-114

ARPP-21 Antibody (N-term) - Additional Information**Gene ID** 10777**Other Names**

cAMP-regulated phosphoprotein 21, ARPP-21, Thymocyte cAMP-regulated phosphoprotein, ARPP21, TARPP

Target/Specificity

This ARPP-21 antibody is generated from rabbits immunized with a KLH conjugated synthetic peptide between 85-114 amino acids from the N-terminal region of human ARPP-21.

Dilution

WB~~1:1000

Format

Purified polyclonal antibody supplied in PBS with 0.09% (W/V) sodium azide. This antibody is purified through a protein A column, followed by peptide affinity purification.

Storage

Maintain refrigerated at 2-8°C for up to 2 weeks. For long term storage store at -20°C in small aliquots to prevent freeze-thaw cycles.

Precautions

ARPP-21 Antibody (N-term) is for research use only and not for use in diagnostic or therapeutic procedures.

ARPP-21 Antibody (N-term) - Protein Information**Name** ARPP21

Synonyms TARPP

Function Isoform 2 may act as a competitive inhibitor of calmodulin- dependent enzymes such as calcineurin in neurons.

Cellular Location

Cytoplasm.

Tissue Location

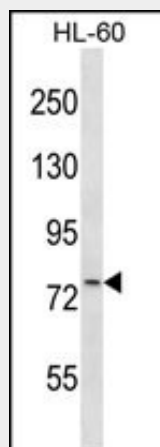
Isoform 2 is expressed in brain. Isoform 1 is present in immature thymocytes (at protein level)

ARPP-21 Antibody (N-term) - Protocols

Provided below are standard protocols that you may find useful for product applications.

- [Western Blot](#)
- [Blocking Peptides](#)
- [Dot Blot](#)
- [Immunohistochemistry](#)
- [Immunofluorescence](#)
- [Immunoprecipitation](#)
- [Flow Cytometry](#)
- [Cell Culture](#)

ARPP-21 Antibody (N-term) - Images



ARPP-21 Antibody (N-term) (Cat. #AP13040a) western blot analysis in HL-60 cell line lysates (35ug/lane). This demonstrates the ARPP-21 antibody detected the ARPP-21 protein (arrow).

ARPP-21 Antibody (N-term) - Background

Isoform 2 may act as a competitive inhibitor of calmodulin-dependent enzymes such as calcineurin in neurons (By similarity).

ARPP-21 Antibody (N-term) - References

Rose, J.E., et al. Mol. Med. 16 (7-8), 247-253 (2010) :
Need, A.C., et al. Hum. Mol. Genet. 18(23):4650-4661(2009)
Lamesch, P., et al. Genomics 89(3):307-315(2007)
Brill, L.M., et al. Anal. Chem. 76(10):2763-2772(2004)

Brill, L.M., et al. Anal. Chem. 76(10):2763-2772(2004)