

MUC15 Antibody (C-term)
Affinity Purified Rabbit Polyclonal Antibody (Pab)
Catalog # AP13032b

Specification

MUC15 Antibody (C-term) - Product Information

Application	WB, IHC-P,E
Primary Accession	Q8N387
Other Accession	NP_663625.2
Reactivity	Human
Host	Rabbit
Clonality	Polyclonal
Isotype	Rabbit IgG
Calculated MW	36294
Antigen Region	209-237

MUC15 Antibody (C-term) - Additional Information

Gene ID 143662

Other Names

Mucin-15, MUC-15, MUC15

Target/Specificity

This MUC15 antibody is generated from rabbits immunized with a KLH conjugated synthetic peptide between 209-237 amino acids from the C-terminal region of human MUC15.

Dilution

WB~~1:1000
IHC-P~~1:10~50

Format

Purified polyclonal antibody supplied in PBS with 0.09% (W/V) sodium azide. This antibody is purified through a protein A column, followed by peptide affinity purification.

Storage

Maintain refrigerated at 2-8°C for up to 2 weeks. For long term storage store at -20°C in small aliquots to prevent freeze-thaw cycles.

Precautions

MUC15 Antibody (C-term) is for research use only and not for use in diagnostic or therapeutic procedures.

MUC15 Antibody (C-term) - Protein Information

Name MUC15

Function May play a role in the cell adhesion to the extracellular matrix.

Cellular Location

[Isoform 1]: Cell membrane; Single- pass type I membrane protein

Tissue Location

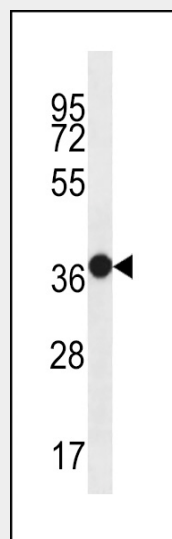
Expressed in spleen, thymus, prostate, testis, ovary, small intestine, colon, peripheral blood leukocyte, bone marrow, lymph node and lung.

MUC15 Antibody (C-term) - Protocols

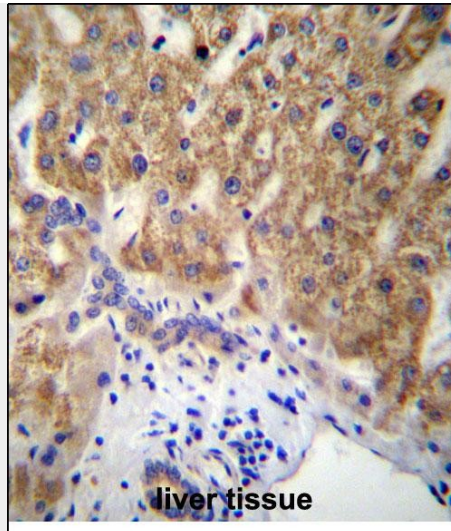
Provided below are standard protocols that you may find useful for product applications.

- [Western Blot](#)
- [Blocking Peptides](#)
- [Dot Blot](#)
- [Immunohistochemistry](#)
- [Immunofluorescence](#)
- [Immunoprecipitation](#)
- [Flow Cytometry](#)
- [Cell Culture](#)

MUC15 Antibody (C-term) - Images



MUC15 Antibody (C-term) (Cat. #AP13032b) western blot analysis in WiDr cell line lysates (35ug/lane). This demonstrates the MUC15 antibody detected the MUC15 protein (arrow).



MUC15 Antibody (C-term) (Cat. #AP13032b) immunohistochemistry analysis in formalin fixed and paraffin embedded human liver tissue followed by peroxidase conjugation of the secondary antibody and DAB staining. This data demonstrates the use of MUC15 Antibody (C-term) for immunohistochemistry. Clinical relevance has not been evaluated.

MUC15 Antibody (C-term) - Background

MUC15 may play a role in the cell adhesion to the extracellular matrix.

MUC15 Antibody (C-term) - References

- Cotsapas, C., et al. Hum. Mol. Genet. 18(18):3502-3507(2009)
- Huang, J., et al. Carcinogenesis 30(8):1452-1458(2009)
- Samuels, T.L., et al. Ann. Otol. Rhinol. Laryngol. 117(9):688-695(2008)
- Shyu, M.K., et al. Hum. Reprod. 22(10):2723-2732(2007)
- Lamesch, P., et al. Genomics 89(3):307-315(2007)