

GST Tag Antibody
Purified Rabbit Polyclonal Antibody (Pab)
Catalog # AP1298a

Specification

GST Tag Antibody - Product Information

Application	WB,E
Host	Rabbit
Clonality	Polyclonal
Isotype	Rabbit IgG

GST Tag Antibody - Additional Information

Other Names
Green Fluorescent Protein

Target/Specificity
This GST Tag antibody is generated from rabbits immunized with a recombinant full length of GST.

Dilution
WB~~1:1000

Format
Purified polyclonal antibody supplied in PBS with 0.09% (W/V) sodium azide. This antibody is prepared by Saturated Ammonium Sulfate (SAS) precipitation followed by dialysis against PBS.

Storage
Maintain refrigerated at 2-8°C for up to 2 weeks. For long term storage store at -20°C in small aliquots to prevent freeze-thaw cycles.

Precautions
GST Tag Antibody is for research use only and not for use in diagnostic or therapeutic procedures.

GST Tag Antibody - Protein Information

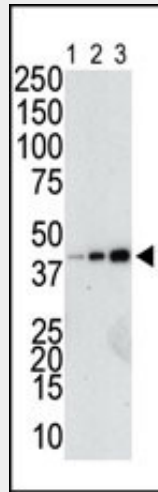
GST Tag Antibody - Protocols

Provided below are standard protocols that you may find useful for product applications.

- [Western Blot](#)
- [Blocking Peptides](#)
- [Dot Blot](#)
- [Immunohistochemistry](#)
- [Immunofluorescence](#)
- [Immunoprecipitation](#)
- [Flow Cytometry](#)

- [Cell Culture](#)

GST Tag Antibody - Images



The anti-GST Pab (Cat. #AP1298a) is used in Western blot to detect a GST-fusion recombinant protein (42 kDa) purified from bacterial lysate (Lanes 1-3: 10, 40, and 160 ng GST-fusion protein).

GST Tag Antibody - Background

Glutathione S-transferase (GST) was originally cloned from parasite *Schistosoma japonicum* and it is now a widely used protein fusion partner. Vectors containing GST Tag have been developed for both prokaryotic and eukaryotic systems. The GST fusion proteins are easily purified from cell lysates by affinity chromatography using Glutathione Sepharose 4B to elute out the GST fusion protein from the column with a denaturing form of glutathione. Using the Abgent anti-GST antibody provides a simple solution to detect the expression of GST fusion proteins in cells.

GST Tag Antibody - Citations

- [Mammalian sterile 20-like kinase 1/2 inhibit Wnt/ \$\beta^2\$ -catenin signaling pathway by directly binding Casein kinase 1 epsilon.](#)
- [Scd6 targets eIF4G to repress translation: RGG motif proteins as a class of eIF4G-binding proteins.](#)
- [Decapping activators in *Saccharomyces cerevisiae* act by multiple mechanisms.](#)