

TLE4 Antibody (N-term)
Affinity Purified Rabbit Polyclonal Antibody (Pab)
Catalog # AP12953a

Specification

TLE4 Antibody (N-term) - Product Information

Application	WB,E
Primary Accession	Q04727
Other Accession	Q07141 , Q62441 , NP_008936.2
Reactivity	Human
Predicted	Mouse, Rat
Host	Rabbit
Clonality	Polyclonal
Isotype	Rabbit IgG
Calculated MW	83755
Antigen Region	167-196

TLE4 Antibody (N-term) - Additional Information

Gene ID 7091

Other Names

Transducin-like enhancer protein 4, Grg-4, Groucho-related protein 4, TLE4, GRG4, KIAA1261

Target/Specificity

This TLE4 antibody is generated from rabbits immunized with a KLH conjugated synthetic peptide between 167-196 amino acids from the N-terminal region of human TLE4.

Dilution

WB~~1:1000

Format

Purified polyclonal antibody supplied in PBS with 0.09% (W/V) sodium azide. This antibody is purified through a protein A column, followed by peptide affinity purification.

Storage

Maintain refrigerated at 2-8°C for up to 2 weeks. For long term storage store at -20°C in small aliquots to prevent freeze-thaw cycles.

Precautions

TLE4 Antibody (N-term) is for research use only and not for use in diagnostic or therapeutic procedures.

TLE4 Antibody (N-term) - Protein Information

Name TLE4

Synonyms GRG4, KIAA1261

Function Transcriptional corepressor that binds to a number of transcription factors. Inhibits the transcriptional activation mediated by PAX5, and by CTNNB1 and TCF family members in Wnt signaling. The effects of full-length TLE family members may be modulated by association with dominant-negative AES. Essential for the transcriptional repressor activity of SIX3 during retina and lens development and for SIX3 transcriptional auto-repression (By similarity). Involved in transcriptional repression of GNRHR and enhances MSX1-mediated transcriptional repression of CGA/alpha-GSU (By similarity).

Cellular Location

Nucleus.

Tissue Location

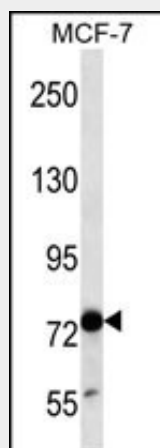
In all tissues examined, mostly in brain, and muscle

TLE4 Antibody (N-term) - Protocols

Provided below are standard protocols that you may find useful for product applications.

- [Western Blot](#)
- [Blocking Peptides](#)
- [Dot Blot](#)
- [Immunohistochemistry](#)
- [Immunofluorescence](#)
- [Immunoprecipitation](#)
- [Flow Cytometry](#)
- [Cell Culture](#)

TLE4 Antibody (N-term) - Images



TLE4 Antibody (N-term) (Cat. #AP12953a) western blot analysis in MCF-7 cell line lysates (35ug/lane). This demonstrates the TLE4 antibody detected the TLE4 protein (arrow).

TLE4 Antibody (N-term) - Background

TLE4 is a transcriptional corepressor that binds to a number of transcription factors. Inhibits the transcriptional activation mediated by PAX5, and by CTNNB1 and TCF family members in Wnt signaling. The effects of full-length TLE family members may be modulated by association with dominant-negative AES (By similarity).

TLE4 Antibody (N-term) - References

Liu, Y., et al. PLoS Genet. 5 (11), E1000707 (2009) :
Hancock, D.B., et al. PLoS Genet. 5 (8), E1000623 (2009) :
Stolk, L., et al. Nat. Genet. (2009) In press :
Dayyani, F., et al. Blood 111(8):4338-4347(2008)
Heimbucher, T., et al. Mol. Cell. Biol. 27(1):340-351(2007)