

**TUFM Antibody (C-term)**  
**Affinity Purified Rabbit Polyclonal Antibody (Pab)**  
**Catalog # AP12916b**

**Specification**

---

**TUFM Antibody (C-term) - Product Information**

Application	WB,E
Primary Accession	<a href="#">P49411</a>
Other Accession	<a href="#">P85834</a> , <a href="#">Q8BFR5</a> , <a href="#">NP_003312.3</a>
Reactivity	Human
Predicted	Mouse, Rat
Host	Rabbit
Clonality	Polyclonal
Isotype	Rabbit IgG
Calculated MW	49875
Antigen Region	342-370

**TUFM Antibody (C-term) - Additional Information**

**Gene ID** 7284

**Other Names**

Elongation factor Tu, mitochondrial, EF-Tu, P43, TUFM

**Target/Specificity**

This TUFM antibody is generated from rabbits immunized with a KLH conjugated synthetic peptide between 342-370 amino acids from the C-terminal region of human TUFM.

**Dilution**

WB~~1:1000

**Format**

Purified polyclonal antibody supplied in PBS with 0.09% (W/V) sodium azide. This antibody is purified through a protein A column, followed by peptide affinity purification.

**Storage**

Maintain refrigerated at 2-8°C for up to 2 weeks. For long term storage store at -20°C in small aliquots to prevent freeze-thaw cycles.

**Precautions**

TUFM Antibody (C-term) is for research use only and not for use in diagnostic or therapeutic procedures.

**TUFM Antibody (C-term) - Protein Information**

**Name** TUFM

**Function** Promotes the GTP-dependent binding of aminoacyl-tRNA to the A-site of ribosomes

during protein biosynthesis. Also plays a role in the regulation of autophagy and innate immunity. Recruits ATG5-ATG12 and NLRX1 at mitochondria and serves as a checkpoint of the RIGI-MAVS pathway. In turn, inhibits RLR-mediated type I interferon while promoting autophagy.

#### Cellular Location

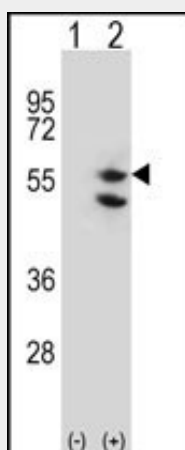
Mitochondrion.

#### TUFM Antibody (C-term) - Protocols

Provided below are standard protocols that you may find useful for product applications.

- [Western Blot](#)
- [Blocking Peptides](#)
- [Dot Blot](#)
- [Immunohistochemistry](#)
- [Immunofluorescence](#)
- [Immunoprecipitation](#)
- [Flow Cytometry](#)
- [Cell Culture](#)

#### TUFM Antibody (C-term) - Images



Western blot analysis of TUFM (arrow) using rabbit polyclonal TUFM Antibody (C-term) (Cat. #AP12916b). 293 cell lysates (2 ug/lane) either nontransfected (Lane 1) or transiently transfected (Lane 2) with the TUFM gene.

#### TUFM Antibody (C-term) - Background

This gene encodes a protein which participates in protein translation in mitochondria. Mutations in this gene have been associated with combined oxidative phosphorylation deficiency resulting in lactic acidosis and fatal encephalopathy. A pseudogene has been identified on chromosome 17.

#### TUFM Antibody (C-term) - References

Valente, L., et al. *Biochim. Biophys. Acta* 1792(8):791-795(2009)  
Sasarman, F., et al. *Hum. Mol. Genet.* 17(23):3697-3707(2008)  
Bogenhagen, D.F., et al. *J. Biol. Chem.* 283(6):3665-3675(2008)  
Lamesch, P., et al. *Genomics* 89(3):307-315(2007)

Ewing, R.M., et al. Mol. Syst. Biol. 3, 89 (2007) :