

YIPF1 Antibody (N-term)
Affinity Purified Rabbit Polyclonal Antibody (Pab)
Catalog # AP12859a

Specification

YIPF1 Antibody (N-term) - Product Information

| | |
|-------------------|-----------------------------|
| Application | WB, IHC-P,E |
| Primary Accession | O9Y548 |
| Other Accession | NP_061855.1 |
| Reactivity | Human |
| Host | Rabbit |
| Clonality | Polyclonal |
| Isotype | Rabbit IgG |
| Calculated MW | 34277 |
| Antigen Region | 34-63 |

YIPF1 Antibody (N-term) - Additional Information

Gene ID 54432

Other Names

Protein YIPF1, YIP1 family member 1, YIPF1

Target/Specificity

This YIPF1 antibody is generated from rabbits immunized with a KLH conjugated synthetic peptide between 34-63 amino acids from the N-terminal region of human YIPF1.

Dilution

WB~~1:1000
IHC-P~~1:10~50

Format

Purified polyclonal antibody supplied in PBS with 0.09% (W/V) sodium azide. This antibody is purified through a protein A column, followed by peptide affinity purification.

Storage

Maintain refrigerated at 2-8°C for up to 2 weeks. For long term storage store at -20°C in small aliquots to prevent freeze-thaw cycles.

Precautions

YIPF1 Antibody (N-term) is for research use only and not for use in diagnostic or therapeutic procedures.

YIPF1 Antibody (N-term) - Protein Information

Name YIPF1

Cellular Location

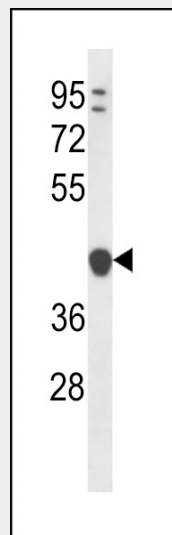
Golgi apparatus, cis-Golgi network membrane; Multi-pass membrane protein. Golgi apparatus, trans-Golgi network membrane. Late endosome membrane. Note=Mainly localizes within medial-/trans-Golgi and trans-Golgi network (TGN), while less so within cis-Golgi.

YIPF1 Antibody (N-term) - Protocols

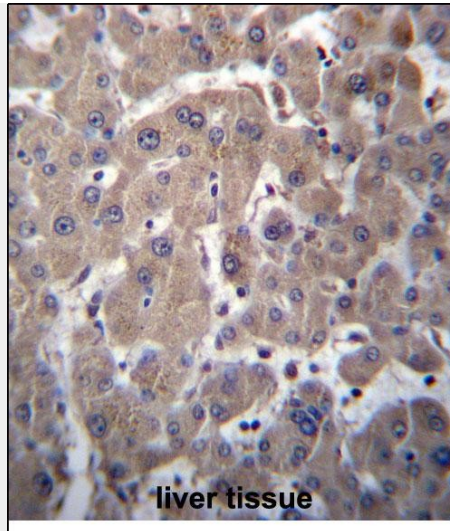
Provided below are standard protocols that you may find useful for product applications.

- [Western Blot](#)
- [Blocking Peptides](#)
- [Dot Blot](#)
- [Immunohistochemistry](#)
- [Immunofluorescence](#)
- [Immunoprecipitation](#)
- [Flow Cytometry](#)
- [Cell Culture](#)

YIPF1 Antibody (N-term) - Images



YIPF1 Antibody (N-term) (Cat. #AP12859a) western blot analysis in ZR-75-1 cell line lysates (35ug/lane). This demonstrates the YIPF1 antibody detected the YIPF1 protein (arrow).



YIPF1 Antibody (N-term) (Cat. #AP12859a) immunohistochemistry analysis in formalin fixed and paraffin embedded human liver tissue followed by peroxidase conjugation of the secondary antibody and DAB staining. This data demonstrates the use of YIPF1 Antibody (N-term) for immunohistochemistry. Clinical relevance has not been evaluated.

YIPF1 Antibody (N-term) - Background

YIPF1 is a multi-pass membrane protein. It belongs to the YIP1 family. The exact function of YIPF1 remains unknown. There are two named isoforms.

YIPF1 Antibody (N-term) - References

Starkuviene, V., et al. *Genome Res.* 14 (10A), 1948-1956 (2004) :
Simpson, J.C., et al. *EMBO Rep.* 1(3):287-292(2000)