

NPTN Antibody (N-term)
Affinity Purified Rabbit Polyclonal Antibody (Pab)
Catalog # AP12852A

Specification

NPTN Antibody (N-term) - Product Information

Application	WB,E
Primary Accession	O9Y639
Other Accession	P97546 , P97300 , NP_001154835.1 , NP_036560.1 , NP_001154836.1 , NP_059429.1
Reactivity	Human
Predicted	Mouse, Rat
Host	Rabbit
Clonality	Polyclonal
Isotype	Rabbit IgG
Calculated MW	44387
Antigen Region	188-216

NPTN Antibody (N-term) - Additional Information

Gene ID 27020

Other Names

Neuroplastin, Stromal cell-derived receptor 1, SDR-1, NPTN, SDFR1, SDR1

Target/Specificity

This NPTN antibody is generated from rabbits immunized with a KLH conjugated synthetic peptide between 188-216 amino acids from the N-terminal region of human NPTN.

Dilution

WB~~1:1000

Format

Purified polyclonal antibody supplied in PBS with 0.09% (W/V) sodium azide. This antibody is purified through a protein A column, followed by peptide affinity purification.

Storage

Maintain refrigerated at 2-8°C for up to 2 weeks. For long term storage store at -20°C in small aliquots to prevent freeze-thaw cycles.

Precautions

NPTN Antibody (N-term) is for research use only and not for use in diagnostic or therapeutic procedures.

NPTN Antibody (N-term) - Protein Information

Name NPTN

Synonyms SDFR1, SDR1

Function Probable homophilic and heterophilic cell adhesion molecule involved in long term potentiation at hippocampal excitatory synapses through activation of p38MAPK. May also regulate neurite outgrowth by activating the FGFR1 signaling pathway. May play a role in synaptic plasticity (By similarity). Also acts as a chaperone for ATP2B1; stabilizes ATP2B1 and increases its ATPase activity (PubMed:[30190470](#)). Promotes localization of XKR8 at the cell membrane (PubMed:[27503893](#)).

Cellular Location

Cell membrane {ECO:0000250|UniProtKB:P97546}; Single-pass type I membrane protein {ECO:0000250|UniProtKB:P97546}

Tissue Location

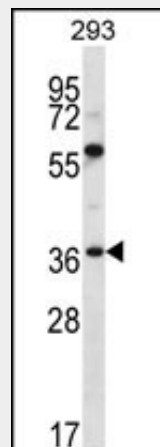
Isoform 1 is ubiquitously expressed. Isoform 2 is expressed in brain cortex and cerebellum (at protein level) {ECO:0000269|PubMed:17196182, ECO:0000269|Ref.1}

NPTN Antibody (N-term) - Protocols

Provided below are standard protocols that you may find useful for product applications.

- [Western Blot](#)
- [Blocking Peptides](#)
- [Dot Blot](#)
- [Immunohistochemistry](#)
- [Immunofluorescence](#)
- [Immunoprecipitation](#)
- [Flow Cytometry](#)
- [Cell Culture](#)

NPTN Antibody (N-term) - Images



NPTN Antibody (N-term) (Cat. #AP12852a) western blot analysis in 293 cell line lysates (35ug/lane). This demonstrates the NPTN antibody detected the NPTN protein (arrow).

NPTN Antibody (N-term) - Background

This gene encodes a type I transmembrane protein belonging to the Ig superfamily. The protein is believed to be involved in cell-cell interactions or cell-substrate interactions. Alternative

splicing results in multiple transcript variants. [provided by RefSeq].

NPTN Antibody (N-term) - References

Bernstein, H.G., et al. Brain Res. 1134(1):107-112(2007)
Saito, A., et al. Neurosci. Lett. 411(3):168-173(2007)
Zhang, Z., et al. Protein Sci. 13(10):2819-2824(2004)
Langnaese, K., et al. J. Biol. Chem. 272(2):821-827(1997)