

SULF2 Antibody (C-term)
Affinity Purified Rabbit Polyclonal Antibody (Pab)
Catalog # AP12788b

Specification

SULF2 Antibody (C-term) - Product Information

Application	WB,E
Primary Accession	Q8IWU5
Other Accession	Q8CFG0 , NP_001155313.1 , NP_061325.1 , NP_940998.2
Reactivity	Human
Predicted	Mouse
Host	Rabbit
Clonality	Polyclonal
Isotype	Rabbit IgG
Calculated MW	100455
Antigen Region	824-852

SULF2 Antibody (C-term) - Additional Information

Gene ID 55959

Other Names

Extracellular sulfatase Sulf-2, hSulf-2, 316-, SULF2, KIAA1247

Target/Specificity

This SULF2 antibody is generated from rabbits immunized with a KLH conjugated synthetic peptide between 824-852 amino acids from the C-terminal region of human SULF2.

Dilution

WB~~1:1000

Format

Purified polyclonal antibody supplied in PBS with 0.09% (W/V) sodium azide. This antibody is purified through a protein A column, followed by peptide affinity purification.

Storage

Maintain refrigerated at 2-8°C for up to 2 weeks. For long term storage store at -20°C in small aliquots to prevent freeze-thaw cycles.

Precautions

SULF2 Antibody (C-term) is for research use only and not for use in diagnostic or therapeutic procedures.

SULF2 Antibody (C-term) - Protein Information

Name SULF2

Synonyms KIAA1247

Function Exhibits arylsulfatase activity and highly specific endoglucosamine-6-sulfatase activity (PubMed:[12368295](#), PubMed:[30788513](#), PubMed:[35294879](#)). It can remove sulfate from the C-6 position of glucosamine within specific subregions of intact heparin (PubMed:[12368295](#), PubMed:[30788513](#), PubMed:[35294879](#)).

Cellular Location

Endoplasmic reticulum {ECO:0000250|UniProtKB:Q8VI60}. Golgi apparatus, Golgi stack {ECO:0000250|UniProtKB:Q8VI60}. Cell surface

Tissue Location

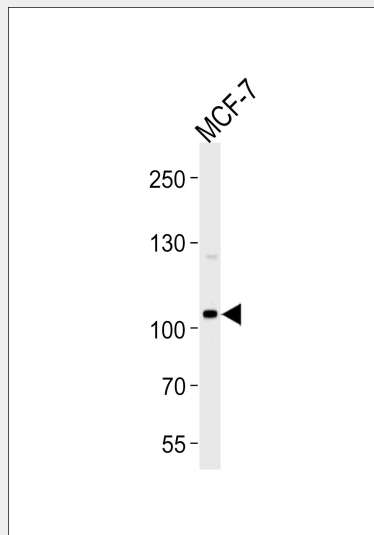
Expressed at highest levels in the ovary, skeletal muscle, stomach, brain, uterus, heart, kidney and placenta

SULF2 Antibody (C-term) - Protocols

Provided below are standard protocols that you may find useful for product applications.

- [Western Blot](#)
- [Blocking Peptides](#)
- [Dot Blot](#)
- [Immunohistochemistry](#)
- [Immunofluorescence](#)
- [Immunoprecipitation](#)
- [Flow Cytometry](#)
- [Cell Culture](#)

SULF2 Antibody (C-term) - Images



Western blot analysis of lysate from MCF-7 cell line, using SULF2 Antibody (C-term)(Cat. #AP12788b). AP12788b was diluted at 1:1000 at each lane. A goat anti-rabbit IgG H&L(HRP) at 1:5000 dilution was used as the secondary antibody. Lysate at 35ug per lane.

SULF2 Antibody (C-term) - Background

Heparan sulfate proteoglycans (HSPGs) act as coreceptors for numerous heparin-binding growth

factors and cytokines and are involved in cell signaling. Heparan sulfate 6-O-endosulfatases, such as SULF2, selectively remove 6-O-sulfate groups from heparan sulfate. This activity modulates the effects of heparan sulfate by altering binding sites for signaling molecules (Dai et al., 2005 [PubMed 16192265]).

SULF2 Antibody (C-term) - References

Lai, J.P., et al. Hepatology 52(5):1680-1689(2010) Ellinor, P.T., et al. Nat. Genet. 42(3):240-244(2010) Lemjabbar-Alaoui, H., et al. Oncogene 29(5):635-646(2010) Tang, R., et al. J. Biol. Chem. 284(32):21505-21514(2009) Chau, B.N., et al. Cancer Res. 69(4):1368-1374(2009)