

**BTG3 Antibody (Center)**  
**Affinity Purified Rabbit Polyclonal Antibody (Pab)**  
**Catalog # AP12750c**

**Specification**

---

**BTG3 Antibody (Center) - Product Information**

Application	WB, IHC-P,E
Primary Accession	<a href="#">O14201</a>
Other Accession	<a href="#">NP_001124386.1</a>
Reactivity	Human
Host	Rabbit
Clonality	Polyclonal
Isotype	Rabbit IgG
Calculated MW	29116
Antigen Region	100-129

**BTG3 Antibody (Center) - Additional Information**

**Gene ID** 10950

**Other Names**

Protein BTG3, Abundant in neuroepithelium area protein, BTG family member 3, Protein Tob5, BTG3, ANA, TOB5

**Target/Specificity**

This BTG3 antibody is generated from rabbits immunized with a KLH conjugated synthetic peptide between 100-129 amino acids from the Central region of human BTG3.

**Dilution**

WB~~1:1000  
IHC-P~~1:10~50

**Format**

Purified polyclonal antibody supplied in PBS with 0.09% (W/V) sodium azide. This antibody is purified through a protein A column, followed by peptide affinity purification.

**Storage**

Maintain refrigerated at 2-8°C for up to 2 weeks. For long term storage store at -20°C in small aliquots to prevent freeze-thaw cycles.

**Precautions**

BTG3 Antibody (Center) is for research use only and not for use in diagnostic or therapeutic procedures.

**BTG3 Antibody (Center) - Protein Information**

**Name** BTG3

### Synonyms ANA, TOB5

**Function** Overexpression impairs serum-induced cell cycle progression from the G0/G1 to S phase.

### Tissue Location

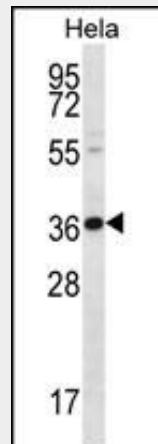
Ubiquitous. High expression in the ventricular zone of the developing central nervous system. High in ovary, testis, prostate, thymus and lung.

### BTG3 Antibody (Center) - Protocols

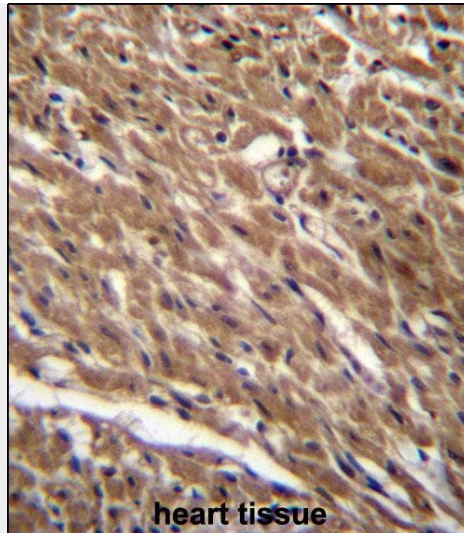
Provided below are standard protocols that you may find useful for product applications.

- [Western Blot](#)
- [Blocking Peptides](#)
- [Dot Blot](#)
- [Immunohistochemistry](#)
- [Immunofluorescence](#)
- [Immunoprecipitation](#)
- [Flow Cytometry](#)
- [Cell Culture](#)

### BTG3 Antibody (Center) - Images



BTG3 Antibody (Center) (Cat. #AP12750c) western blot analysis in HeLa cell line lysates (35ug/lane). This demonstrates the BTG3 antibody detected the BTG3 protein (arrow).



BTG3 Antibody (Center) (Cat. #AP12750c) immunohistochemistry analysis in formalin fixed and paraffin embedded human heart tissue followed by peroxidase conjugation of the secondary antibody and DAB staining. This data demonstrates the use of BTG3 Antibody (Center) for immunohistochemistry. Clinical relevance has not been evaluated.

#### **BTG3 Antibody (Center) - Background**

The protein encoded by this gene is a member of the BTG/Tob family. This family has structurally related proteins that appear to have antiproliferative properties. This encoded protein might play a role in neurogenesis in the central nervous system. Two transcript variants encoding different isoforms have been found for this gene.

#### **BTG3 Antibody (Center) - References**

- Majid, S., et al. *Carcinogenesis* 30(4):662-670(2009)
- Yu, J., et al. *Gene Expr.* 14(3):173-182(2008)
- Ou, Y.H., et al. *EMBO J.* 26(17):3968-3980(2007)
- Lim, J., et al. *Cell* 125(4):801-814(2006)
- Yoshida, Y., et al. *Jpn. J. Cancer Res.* 92(6):592-596(2001)