

**CTAGE5 Antibody (C-term)**  
**Affinity Purified Rabbit Polyclonal Antibody (Pab)**  
**Catalog # AP12748b**

**Specification**

---

**CTAGE5 Antibody (C-term) - Product Information**

Application	<b>WB, IHC-P,E</b>
Primary Accession	<a href="#">O15320</a>
Other Accession	<a href="#">NP_976231.1</a>
Reactivity	<b>Human</b>
Host	<b>Rabbit</b>
Clonality	<b>Polyclonal</b>
Isotype	<b>Rabbit IgG</b>
Antigen Region	<b>775-804</b>

**CTAGE5 Antibody (C-term) - Additional Information**

**Other Names**

cTAGE family member 5, Protein cTAGE-5, Meningioma-expressed antigen 6/11, CTAGE5, MEA11, MEA6, MGEA11, MGEA6

**Target/Specificity**

This CTAGE5 antibody is generated from rabbits immunized with a KLH conjugated synthetic peptide between 775-804 amino acids from the C-terminal region of human CTAGE5.

**Dilution**

WB~~1:1000  
IHC-P~~1:10~50

**Format**

Purified polyclonal antibody supplied in PBS with 0.09% (W/V) sodium azide. This antibody is purified through a protein A column, followed by peptide affinity purification.

**Storage**

Maintain refrigerated at 2-8°C for up to 2 weeks. For long term storage store at -20°C in small aliquots to prevent freeze-thaw cycles.

**Precautions**

CTAGE5 Antibody (C-term) is for research use only and not for use in diagnostic or therapeutic procedures.

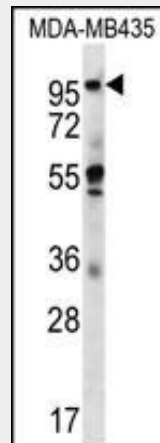
**CTAGE5 Antibody (C-term) - Protein Information**

**CTAGE5 Antibody (C-term) - Protocols**

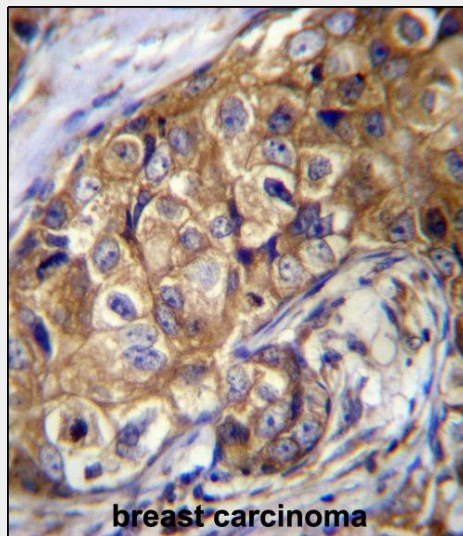
Provided below are standard protocols that you may find useful for product applications.

- [Western Blot](#)
- [Blocking Peptides](#)
- [Dot Blot](#)
- [Immunohistochemistry](#)
- [Immunofluorescence](#)
- [Immunoprecipitation](#)
- [Flow Cytometry](#)
- [Cell Culture](#)

### CTAGE5 Antibody (C-term) - Images



CTAGE5 Antibody (C-term) (Cat. #AP12748b) western blot analysis in MDA-MB435 cell line lysates (35ug/lane). This demonstrates the CTAGE5 antibody detected the CTAGE5 protein (arrow).



CTAGE5 Antibody (C-term) (Cat. #AP12748b) immunohistochemistry analysis in formalin fixed and paraffin embedded human breast carcinoma followed by peroxidase conjugation of the secondary antibody and DAB staining. This data demonstrates the use of CTAGE5 Antibody (C-term) for immunohistochemistry. Clinical relevance has not been evaluated.

### CTAGE5 Antibody (C-term) - Background

CTAGE5 is a tumor-associated antigen.

### CTAGE5 Antibody (C-term) - References

Wu, C., et al. Proteomics 7(11):1775-1785(2007)  
Olsen, J.V., et al. Cell 127(3):635-648(2006)  
Olsen, J.V., et al. Cell 127(3):635-648(2006)  
Usener, D., et al. J. Invest. Dermatol. 121(1):198-206(2003)  
Comtesse, N., et al. Oncogene 21(2):239-247(2002)