

**CLEC18A Antibody (C-term)**  
**Affinity Purified Rabbit Polyclonal Antibody (Pab)**  
**Catalog # AP12716b**

**Specification**

---

**CLEC18A Antibody (C-term) - Product Information**

Application	WB, IHC-P,E
Primary Accession	<a href="#">A5D8T8</a>
Other Accession	<a href="#">O8NCF0</a> , <a href="#">O6UXF7</a> , <a href="#">NP_872425.2</a>
Reactivity	Human
Host	Rabbit
Clonality	Polyclonal
Isotype	Rabbit IgG
Calculated MW	49602
Antigen Region	338-367

**CLEC18A Antibody (C-term) - Additional Information**

**Gene ID** 348174

**Other Names**

C-type lectin domain family 18 member A, Mannose receptor-like protein 2, CLEC18A, MRLP2

**Target/Specificity**

This CLEC18A antibody is generated from rabbits immunized with a KLH conjugated synthetic peptide between 338-367 amino acids from the C-terminal region of human CLEC18A.

**Dilution**

WB~~1:1000  
IHC-P~~1:10~50

**Format**

Purified polyclonal antibody supplied in PBS with 0.09% (W/V) sodium azide. This antibody is purified through a protein A column, followed by peptide affinity purification.

**Storage**

Maintain refrigerated at 2-8°C for up to 2 weeks. For long term storage store at -20°C in small aliquots to prevent freeze-thaw cycles.

**Precautions**

CLEC18A Antibody (C-term) is for research use only and not for use in diagnostic or therapeutic procedures.

**CLEC18A Antibody (C-term) - Protein Information**

**Name** CLEC18A

**Synonyms** MRLP2

**Function** Binds polysaccharides in a Ca(2+)-independent manner with a preferential binding to fucoidan, beta-glucans and galactans (PubMed:[26170455](#)).

**Cellular Location**

Secreted. Endoplasmic reticulum. Golgi apparatus. Endosome

**Tissue Location**

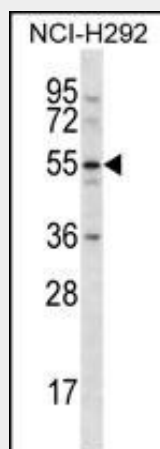
Detected in all cell lines tested and in peripheral blood cells.

**CLEC18A Antibody (C-term) - Protocols**

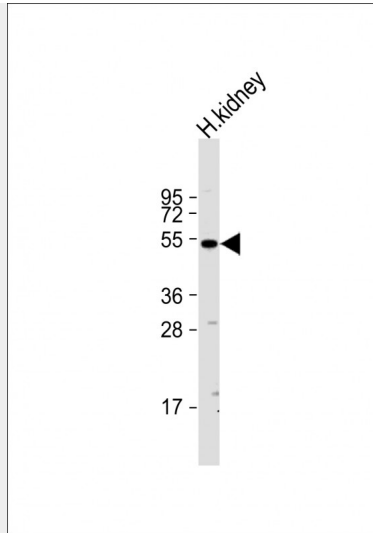
Provided below are standard protocols that you may find useful for product applications.

- [Western Blot](#)
- [Blocking Peptides](#)
- [Dot Blot](#)
- [Immunohistochemistry](#)
- [Immunofluorescence](#)
- [Immunoprecipitation](#)
- [Flow Cytometry](#)
- [Cell Culture](#)

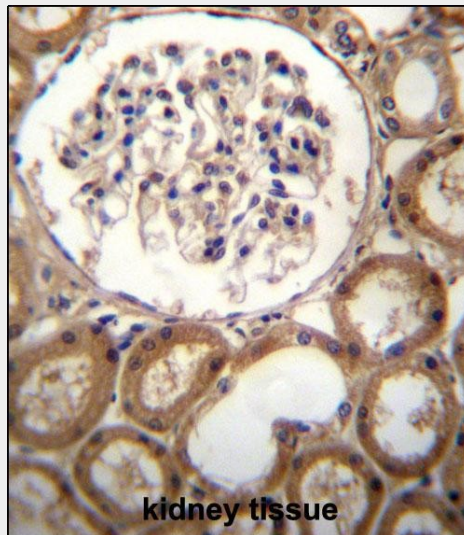
**CLEC18A Antibody (C-term) - Images**



CLEC18A Antibody (C-term) (Cat. #AP12716b) western blot analysis in NCI-H292 cell line lysates (35ug/lane). This demonstrates the CLEC18A antibody detected the CLEC18A protein (arrow).



Anti-CLEC18A Antibody (C-term) at 1:1000 dilution + human kidney lysate Lysates/proteins at 20  $\mu$ g per lane. Secondary Goat Anti-Rabbit IgG, (H+L), Peroxidase conjugated at 1/10000 dilution. Predicted band size : 50 kDa Blocking/Dilution buffer: 5% NFD/MTBST.



CLEC18A Antibody (C-term) (Cat. #AP12716b) immunohistochemistry analysis in formalin fixed and paraffin embedded human kidney tissue followed by peroxidase conjugation of the secondary antibody and DAB staining. This data demonstrates the use of CLEC18A Antibody (C-term) for immunohistochemistry. Clinical relevance has not been evaluated.

#### **CLEC18A Antibody (C-term) - Background**

The function of this protein remains unknown.

#### **CLEC18A Antibody (C-term) - References**

Lamesch, P., et al. Genomics 89(3):307-315(2007)  
Clark, H.F., et al. Genome Res. 13(10):2265-2270(2003)