

CA6 Antibody (C-term)
Affinity Purified Rabbit Polyclonal Antibody (Pab)
Catalog # AP12663b**Specification**

CA6 Antibody (C-term) - Product Information

Application	WB, IHC-P,E
Primary Accession	P23280
Other Accession	NP_001206.2
Reactivity	Human
Host	Rabbit
Clonality	Polyclonal
Isotype	Rabbit IgG
Calculated MW	35367
Antigen Region	238-267

CA6 Antibody (C-term) - Additional Information**Gene ID** 765**Other Names**

Carbonic anhydrase 6, Carbonate dehydratase VI, Carbonic anhydrase VI, CA-VI, Salivary carbonic anhydrase, Secreted carbonic anhydrase, CA6

Target/Specificity

This CA6 antibody is generated from rabbits immunized with a KLH conjugated synthetic peptide between 238-267 amino acids from the C-terminal region of human CA6.

DilutionWB~~1:1000
IHC-P~~1:10~50**Format**

Purified polyclonal antibody supplied in PBS with 0.09% (W/V) sodium azide. This antibody is purified through a protein A column, followed by peptide affinity purification.

Storage

Maintain refrigerated at 2-8°C for up to 2 weeks. For long term storage store at -20°C in small aliquots to prevent freeze-thaw cycles.

Precautions

CA6 Antibody (C-term) is for research use only and not for use in diagnostic or therapeutic procedures.

CA6 Antibody (C-term) - Protein Information**Name** CA6

Function Reversible hydration of carbon dioxide. Its role in saliva is unknown.

Cellular Location

Secreted.

Tissue Location

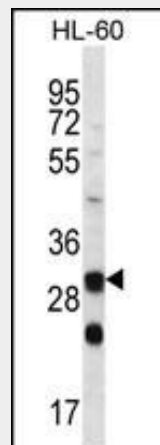
Major constituent of saliva.

CA6 Antibody (C-term) - Protocols

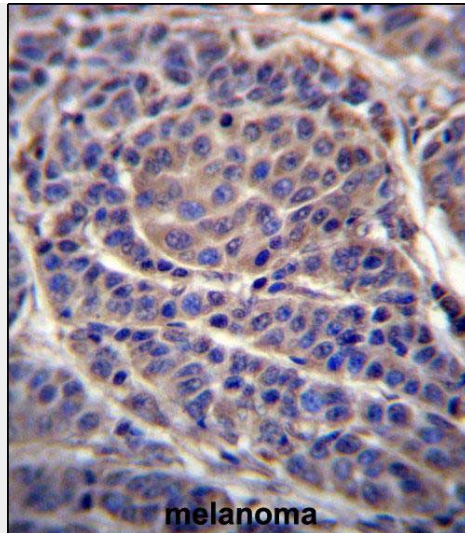
Provided below are standard protocols that you may find useful for product applications.

- [Western Blot](#)
- [Blocking Peptides](#)
- [Dot Blot](#)
- [Immunohistochemistry](#)
- [Immunofluorescence](#)
- [Immunoprecipitation](#)
- [Flow Cytometry](#)
- [Cell Culture](#)

CA6 Antibody (C-term) - Images



CA6 Antibody (C-term) (Cat. #AP12663b) western blot analysis in HL-60 cell line lysates (35ug/lane). This demonstrates the CA6 antibody detected the CA6 protein (arrow).



CA6 Antibody (C-term) (Cat. #AP12663b) immunohistochemistry analysis in formalin fixed and paraffin embedded human melanoma followed by peroxidase conjugation of the secondary antibody and DAB staining. This data demonstrates the use of CA6 Antibody (C-term) for immunohistochemistry. Clinical relevance has not been evaluated.

CA6 Antibody (C-term) - Background

The protein encoded by this gene is one of several isozymes of carbonic anhydrase. This protein is found only in salivary glands and saliva and protein may play a role in the reversible hydration of carbon dioxide though its function in saliva is unknown.

CA6 Antibody (C-term) - References

Padiglia, A., et al. Am. J. Clin. Nutr. 92(3):539-545(2010)
Rose, J.E., et al. Mol. Med. 16 (7-8), 247-253 (2010) :
Peres, R.C., et al. Pharmacogenomics J. 10(2):114-119(2010)
Nishimori, I., et al. Bioorg. Med. Chem. 15(15):5351-5357(2007)
Breton, S. JOP 2 (4 SUPPL), 159-164 (2001) :