

CCDC58 Antibody (N-term)
Affinity Purified Rabbit Polyclonal Antibody (Pab)
Catalog # AP12660a

Specification

CCDC58 Antibody (N-term) - Product Information

Application	WB, IHC-P,E
Primary Accession	O4VC31
Other Accession	O8R3Q6 , A4FUI1 , NP_001017928.1
Reactivity	Human, Mouse
Predicted	Bovine
Host	Rabbit
Clonality	Polyclonal
Isotype	Rabbit IgG
Calculated MW	16620
Antigen Region	5-33

CCDC58 Antibody (N-term) - Additional Information

Gene ID 131076

Other Names

Coiled-coil domain-containing protein 58, CCDC58

Target/Specificity

This CCDC58 antibody is generated from rabbits immunized with a KLH conjugated synthetic peptide between 5-33 amino acids from the N-terminal region of human CCDC58.

Dilution

WB~~1:1000
IHC-P~~1:10~50

Format

Purified polyclonal antibody supplied in PBS with 0.09% (W/V) sodium azide. This antibody is purified through a protein A column, followed by peptide affinity purification.

Storage

Maintain refrigerated at 2-8°C for up to 2 weeks. For long term storage store at -20°C in small aliquots to prevent freeze-thaw cycles.

Precautions

CCDC58 Antibody (N-term) is for research use only and not for use in diagnostic or therapeutic procedures.

CCDC58 Antibody (N-term) - Protein Information

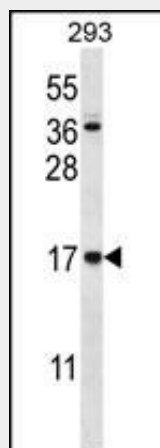
Name MIX23 ([HGNC:31136](#))

CCDC58 Antibody (N-term) - Protocols

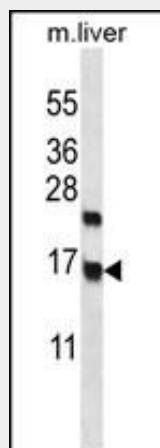
Provided below are standard protocols that you may find useful for product applications.

- [Western Blot](#)
- [Blocking Peptides](#)
- [Dot Blot](#)
- [Immunohistochemistry](#)
- [Immunofluorescence](#)
- [Immunoprecipitation](#)
- [Flow Cytometry](#)
- [Cell Culture](#)

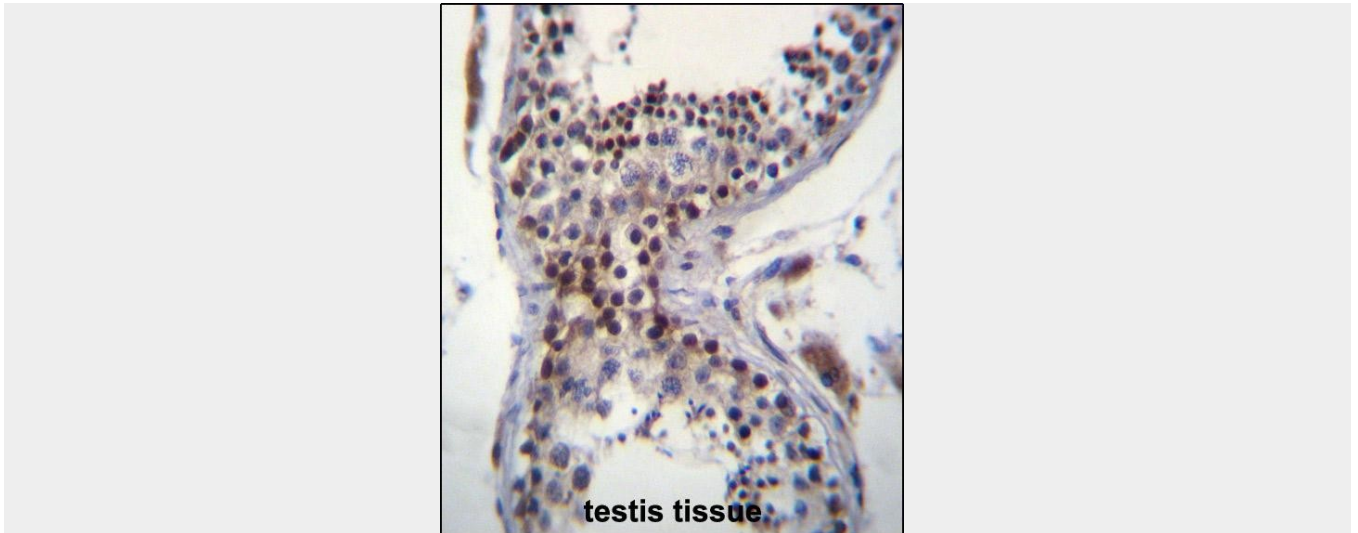
CCDC58 Antibody (N-term) - Images



CCDC58 Antibody (N-term) (Cat. #AP12660a) western blot analysis in 293 cell line lysates (35ug/lane). This demonstrates the CCDC58 antibody detected the CCDC58 protein (arrow).



CCDC58 Antibody (N-term) (Cat. #AP12660a) western blot analysis in mouse liver tissue lysates (35ug/lane). This demonstrates the CCDC58 antibody detected the CCDC58 protein (arrow).



CCDC58 Antibody (N-term) (Cat. #AP12660a) immunohistochemistry analysis in formalin fixed and paraffin embedded human testis tissue followed by peroxidase conjugation of the secondary antibody and DAB staining. This data demonstrates the use of CCDC58 Antibody (N-term) for immunohistochemistry. Clinical relevance has not been evaluated.

CCDC58 Antibody (N-term) - Background

The function of this protein remains unknown.

CCDC58 Antibody (N-term) - References

O'Seaghdha, C.M., et al. Hum. Mol. Genet. 19(21):4296-4303(2010)
Kestenbaum, B., et al. J. Am. Soc. Nephrol. 21(7):1223-1232(2010)